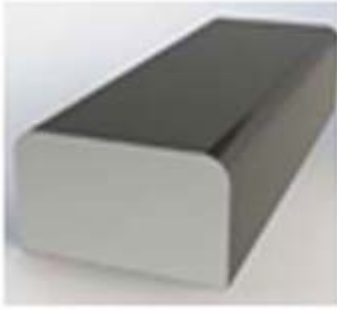


## Crane Rails



Crane Rails also known as **Hot Rolled** and A.S.C.E (American Society of Civil Engineers) rails are tracks upon which a top running crane moves.

We manufacture **steel square and rectangular bars for Crane Rails** of grade ASTM A36 in both **Hot Rolled and Cold Drawn condition**. **Crane Rail** are manufactured using high grade materials and is known for its sturdiness, durability and application specific design. Crane Rails are mainly used in **overhead EOT, Gantry Crane and Hoists**.

Our regular size range is as below.

**Square Bars - 40 mm, 50 mm, 60 mm, 70 mm, 80 mm, 100mm**

**Rectangular Bars - 50x30 mm, 50x40 mm, 60x30 mm, 60x40 mm, 70x40 mm, 80x25 mm, 80x40 mm, 100x50 mm**

Other sizes can also be rolled out as per specific requirements from the customer.