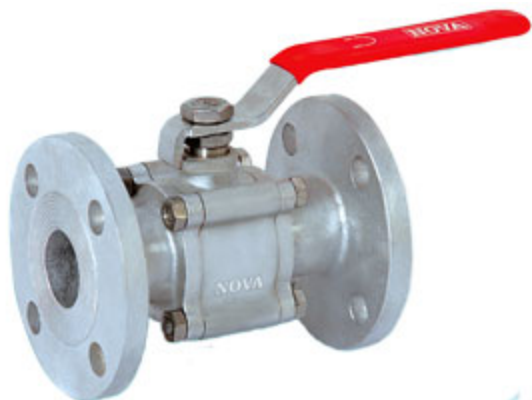


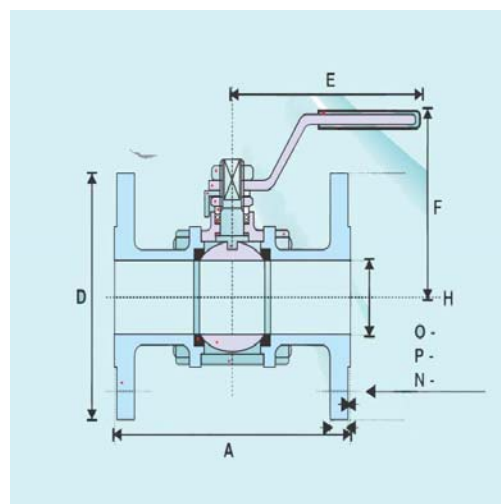
Ball Valves

Nova® Flanged Ends Ball Valve (3 piece)



The qualitative range of three piece Ball Valves Flanged Ends offered by Industrial Flanged Ends Ball Valve us is widely appreciated for its dimensional accuracy. We manufacture this range using stainless steel ball valves and stainless steel pin with Teflon sheets. All these material provide our range with optimum durability. Some of the key specifications of our products include:

VALVE DIMENSIONS(Dimensions in mm)								
Size	15	20	25	32	40	50	65	80
A	108	117	127	140	165	178	190	250
D	89	98.5	108	117.5	127	152.4	178	191
E	145	148	175	210	210	215	300	350
H	12.5	19	25	31	37	50	64	76
O	16	16	16	16	16	19	19	19
N	4	4	4	4	4	4	4	4
P	60.4	69.8	79.5	88.9	98.5	120.6	140	152.5
F	62	64	74	85	87	92	146	170
Wt.kg.	1.200	1.800	2.300	3.600	4.900	6.500		



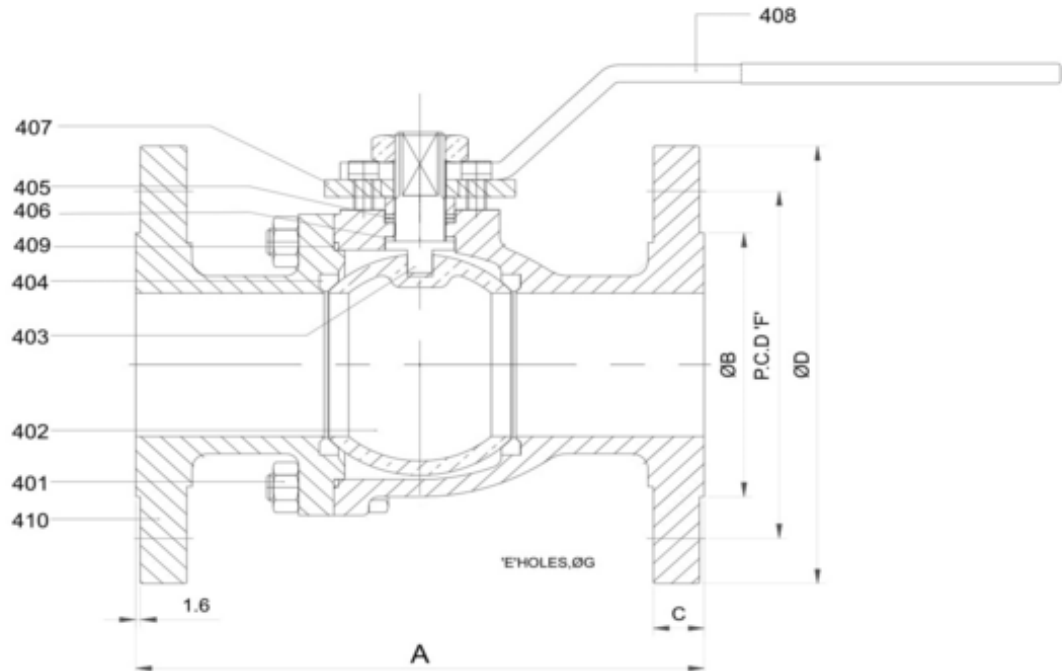
PARTS/MATERIALS LIST	
BODY	S.S.202 / CF 8 (304) CF 8M (316)
BALL	S.S.202 / 304 / 316
PIN	S.S.202 / 304 / 316
SEAT AIR	P.T.F.E.
HANDLE	S.S 202
BODY STUD & NUTS	S.S 202,204

TEST PRESSURE(PSI/KG)		
TESTING	BODY	SEAT
HYDRALIC	1100/77	600/40
SEAT AIR	210/15	210/15

Nova® 2 piece Flanged Ball Valve



We are a preeminent manufacturer and supplier of a comprehensive collection of Two Piece Ball Valves. Widely used for common fluid control applications, these ball valves are available in different models. These are available in standard as well as in customized finishes and are ideal for economical automation. The two piece ball valves we offer to clients are known for maximum structural strength, accurate dimension and easy usage features.



CONFORMITY TO CODES & STANDARDS

1. General Design :- BS 5351
2. Testing :- BS 6755(Part-1)
3. Type :- TWO PIECE, FLANGED END & FLOATING BALL.
4. Rating :- CLASS 150,300,600
5. Face to Face :- ASME B 16.10
6. Pressure & Temperature Rating :- ASME B 16.34 (STANDARD CLASS)
7. Flange Standard Conformity :- ASME B 16.5

DIMENSION TABLE 150#								
SIZE		A	B	C	D	E	F	G
MM	INCH							
25	1"	127	51	11	108	4	79	16
40	1 ¹ / ₂ "	165	73	14	127	4	98	16
50	2"	178	92	16	152	4	121	19
65	2 ¹ / ₂ "	190	105	17	178	4	140	19
80	3"	203	127	19	190	4	152	19
100	4"	229	157	24	229	8	190	19
125	5"	254	186	24	254	8	216	22
150	6"	267	216	25	279	8	241	22
200	8"	292	270	29	343	8	298	22

DIMENSION TABLE 300#								
SIZE		A	B	C	D	E	F	G
MM	INCH							
25	1"	165	51	17.5	124	4	89	19
40	1 ¹ / ₂ "	191	73	21	156	4	114	22
50	2"	216	92	22	165	8	127	22
65	2 ¹ / ₂ "	241	105	25	190	8	149	22
80	3"	282	127	29	209	8	168	22
100	4"	305	157	32	254	8	200	22
125	5"	381	186	35	279	8	235	22
150	6"	403	216	37	318	12	270	22

DIMENSION TABLE 600#								
SIZE		A	B	C	D	E	F	G
MM	INCH							
25	1"	216	51	23.8	124	4	89	19
40	1 ¹ / ₂ "	241	73	28.6	156	4	114.3	22
50	2"	292	92	31.7	165	8	127	22
65	2 ¹ / ₂ "	330	105	34.8	190	8	168	22
80	3"	356	127	38.1	209	8	168	22
100	4"	432	157	44.5	273	8	216	25.4

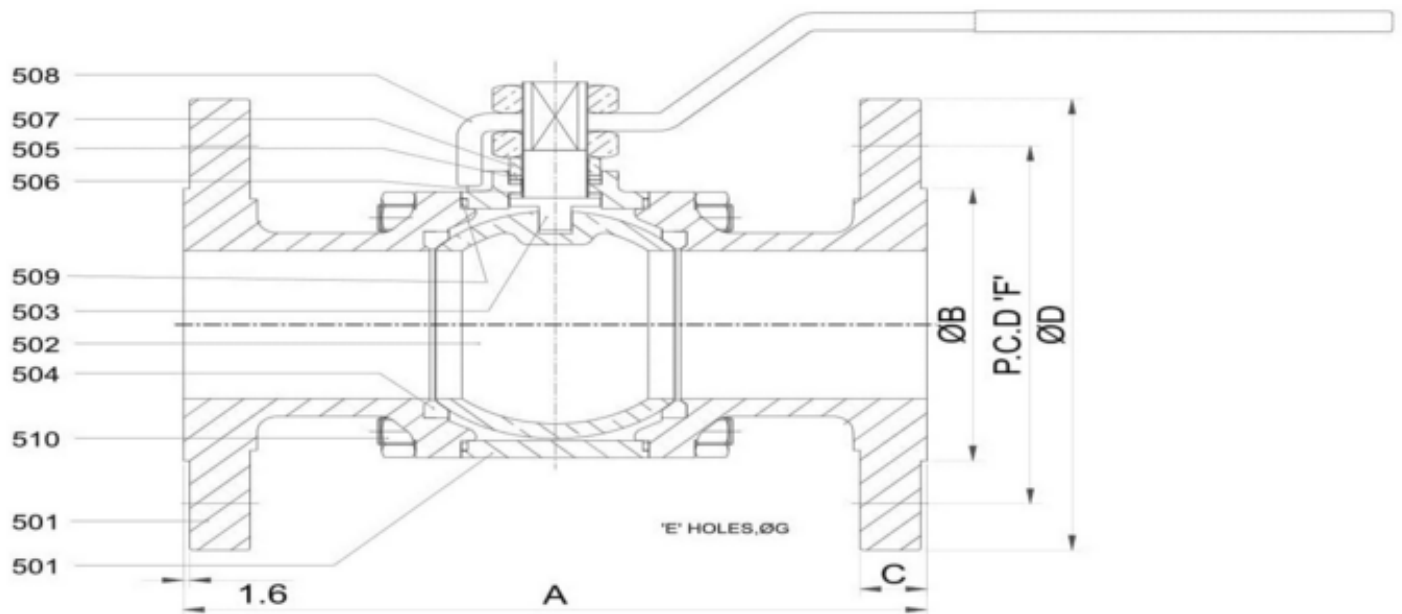
TESTING		
PRESSURE RATING	HYDROSTATIC SHELL TEST	HYDROSTATIC SEAT TEST
	Kg/CM2	Kg/CM2
150#	31.5	22
300#	79	58
600#	157.5	114

MATERIALS					
SR.NO.	PARTS NAME	MATERIALS			
401	BODY & BODY CONNECTOR	A216-WCB	A351-CF8	A351-CF8M	
402	BALL	A216-WCB	A351-CF8	A351-CF8M	
403	STEM	A276-410	A276-304	A276-316	
404	SEAT RINGS	PTFE/R-PTFE(25%GLASS FILLED)			
405	PACKING	PTFE/R-PTFE(25%GLASS FILLED)			
406	THRUST WASHER	PTFE/R-PTFE(25%GLASS FILLED)			
407	GLAND&GLAND NUT	A216-WCB	A351-CF8	A351-CF8M	
408	HANDLE	MS / SS			
409	GASKET	PTFE/R-PTFE(25%GLASS FILLED)			
410	FASTENER	STUD	A193-B7	A193-B8	A193-B8M
		NUTS	A194-2H	A194-B	A194-BM

Nova® Screwed Ends Ball Valves (3 piece)



We are counted among the most respected providers of superior industrial Socket Weld End Ball Valve (3 pieces). These highly demanded valves feature a robust construction that ensures a long service life. Furthermore, these valves are highly appreciated for their dimensional accuracy and non abrasive nature. We offer these valves with the following key specifications



CONFORMITY TO CODES & STANDARDS

1. General Design :- BS 5351
2. Testing :- BS 6755(Part-1)
3. Type :- THREE PIECE, FLANGED END & FLOATING BALL.
4. Rating :- CLASS 150,300,600
5. Face to Face :- ASME B 16.10
6. Pressure & Temperature Rating :- ASME B 16.34 (STANDARD CLASS)
7. Flange Standard Conformity :- ASME B 16.5

DIMENSION TABLE 150#								
SIZE		A	B	C	D	E	F	G
MM	INCH							
25	1"	127	51	11	108	4	79	16
40	1 1/2"	165	73	14	127	4	98	16
50	2"	178	92	16	152	4	121	19
65	2 1/2"	190	105	17	178	4	140	19
80	3"	203	127	19	190	4	152	19
100	4"	229	157	24	229	8	190	19
125	5"	254	186	24	254	8	216	22
150	6"	267	216	25	279	8	241	22
200	8"	292	270	29	343	8	298	22

DIMENSION TABLE 300#								
SIZE		A	B	C	D	E	F	G
MM	INCH							
25	1"	165	51	17.5	124	4	89	19
40	1 1/2"	191	73	21	156	4	114	22
50	2"	216	92	22	165	8	127	22
65	2 1/2"	241	105	25	190	8	149	22
80	3"	282	127	29	209	8	168	22
100	4"	305	157	32	254	8	200	22
125	5"	381	186	35	279	8	235	22
150	6"	403	216	37	318	12	270	22

DIMENSION TABLE 600#								
SIZE		A	B	C	D	E	F	G
MM	INCH							
25	1"	216	51	23.8	124	4	89	19
40	1 1/2"	241	73	28.6	156	4	114.3	22
50	2"	292	92	31.7	165	8	127	22
65	2 1/2"	330	105	34.8	190	8	168	22
80	3"	356	127	38.1	209	8	168	22
100	4"	432	157	44.5	273	8	216	25.4

TESTING		
PRESSURE RATING	HYDROSTATIC SHELL TEST	HYDROSTATIC SEAT TEST
	Kg/CM2	Kg/CM2
150#	31.5	22
300#	79	58
600#	157.5	114

MATERIALS					
SR.NO.	PARTS NAME	MATERIALS			
501	BODY & BODY CONNECTOR	A216-WCB	A351-CF8	A351-CF8M	
502	BALL	A216-WCB	A351-CF8	A351-CF8M	
503	STEM	A276-410	A276-304	A276-316	
504	SEAT RINGS	PTFE/R-PTFE(25%GLASS FILLED)			
505	PACKING	PTFE/R-PTFE(25%GLASS FILLED)			
506	THRUST WASHER	PTFE/R-PTFE(25%GLASS FILLED)			
507	GLAND&GLAND NUT	A216-WCB	A351-CF8	A351-CF8M	
508	HANDLE	MS / SS			
509	GASKET	PTFE/R-PTFE(25%GLASS FILLED)			
510	FASTENER	STUD	A193-B7	A193-B8	A193-B8M
		NUTS	A194-2H	A194-B	A194-BM

Nova® Ball Valves



We are proficient manufacturers and suppliers of 1 piece Socket Weld Ends Ball Valves. These are fabricated using the best quality raw material, sourced from the market trusted vendors. We ensure that the valves offered by us must comply with the norms set in the industry and deliver lasting performance. Some of the key details of our products include:

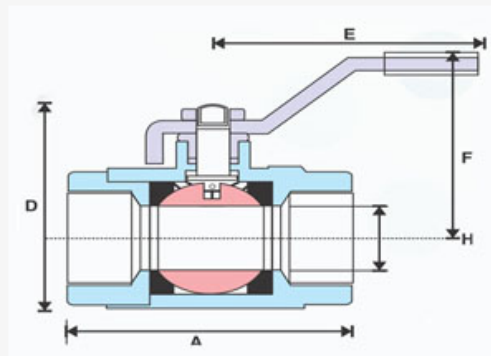
VALVE DIMENSIONS(DIMENSIONS IN MM)

Size	8	10	15	20	25	32	40	50	65	80
A	57	57	65	68	78	95	108	128	145	165
D	50	50	60	68	75	88	112	130	165	170
E	120	120	130	130	140	190	190	215	276	276
H	8	10	12.5	19	25	31	37	50	65	74
F	52	52	55	59	64	87	87	96	105	115
Wt.kg.	0.260	0.260	0.350	0.450	0.590	1.350				

PARTS/MATERIAL LIST

TEST PRESSURE(P/SI/KG)

PARTS/MATERIAL LIST	TEST PRESSURE(P/SI/KG)	TESTING	BODY	SEAT
BODY	S.S.202 / CF 8 (304) CF 8M (316)			
BALL	S.S.202 / 304 / 316	HYDRALIC	1100/77	600/40
PIN	S.S.202 / 304 / 316	SEAT AIR	140/10	140/10
SEAT	P.T.F.E.			
HANDLE	S.S.202			



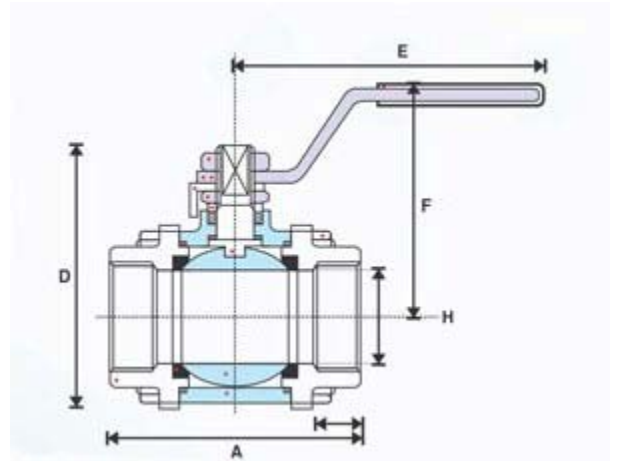
Nova® Forged Steel Ball Valves



The qualitative range of **three piece Forged Ball Valves**, which is offered to customers at industry competitive. Our professionals ensure to design these products so as to meet the demands of different areas such as chemical and petroleum projects.

VALVE DIMENSIONS (Dimensions in mm)

Size	15	20	25	32	40	50
A	80	85	92	110	115	125
D	60	65	80	98	110	125
E	130	130	140	190	190	215
H	12.5	19	25	31	37	50
F	56	64	73	85	92	98
Wt.kg.	0.52	0.65	0.95	1.8	2.25	3.2



PARTS/MATERIALS LIST

BODY	A105
BALL	S.S. 304 / 316
Pin	S.S. 304 / 316
SEAT AIR	CARBON (P.T.F.E.)
HANDLE	M.S.

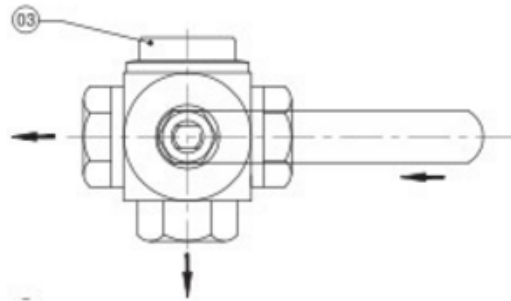
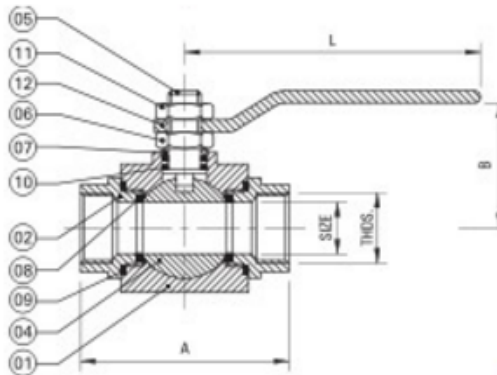
TEST PRESSURE (PSI/KG)

Class	800
Body	70 Kg / Cm ²
Seat	52 Kg / Cm ²
Temp.	200° C
Air Test	Seat 7 kg

Nova® 3 Way Ball Valves Screwed Ends



We offer a wide range of **3 Way Ball Valves** that includes full port and standard port valves. These are available in 4" BSP & socket weld, tri clamp and even larger flange connections. The full port can be easily automated and is offered in a variety of seat materials. Our range of 3-way ball valves is available with either T-port or L-port as per the requirements. Apart from this, it also has a bolt on side flanges that enables easy seat changes.



Sr. No.	Parts Name	Material	Qty.
01	Body	ASTM A 216 Gr. WCB/S.S. 202/304/316	1
02	Body Adaptor	ASTM A 216 Gr. WCB/S.S. 202/304/316	3
03	Body End Cap	ASTM A 216 Gr. WCB/S.S. 202/304/316	1
04	Ball	AISI 304 / AISI 316 / S.S. 202	1
05	Stem	AISI 304 / AISI 316 / S.S. 202	1
06	Gland Nut	AISI 304 / AISI 316 / S.S. 202	1
07	Gland Bush	AISI 304 / AISI 316 / S.S. 202	1
08	Seat Ring	PTFE	4
09	Body Seal	PTFE	4
10	Stem Seal	PTFE	2
11	Lock Nut	AISI 410 / 304 / 316	1
12	Lever	M.S. / S.S. 304 / S.S. 316	1

Class - 150#				
Size NB	A.	BSP/BSPT NPT	L	B
15	75	1/2"	135	56
20	80	3/4"	147	62
25	100	1"	198	77
32	110	1.1/4"	198	81
40	130	1.1/2"	198	90
50	145	2"	271	103
65	165	2.1/2"	271	130
80	175	3"	317	137

Primary Service Rating & Test Pressure				
Class	Working Pressure	Hyd. Test Pressure		
		Body	Seat	Temp.
150	150 PSIG	425 PSIG	300 PSIG	200° F
Air Test - Seat 102 PSIG				

All dimension are in M.M.