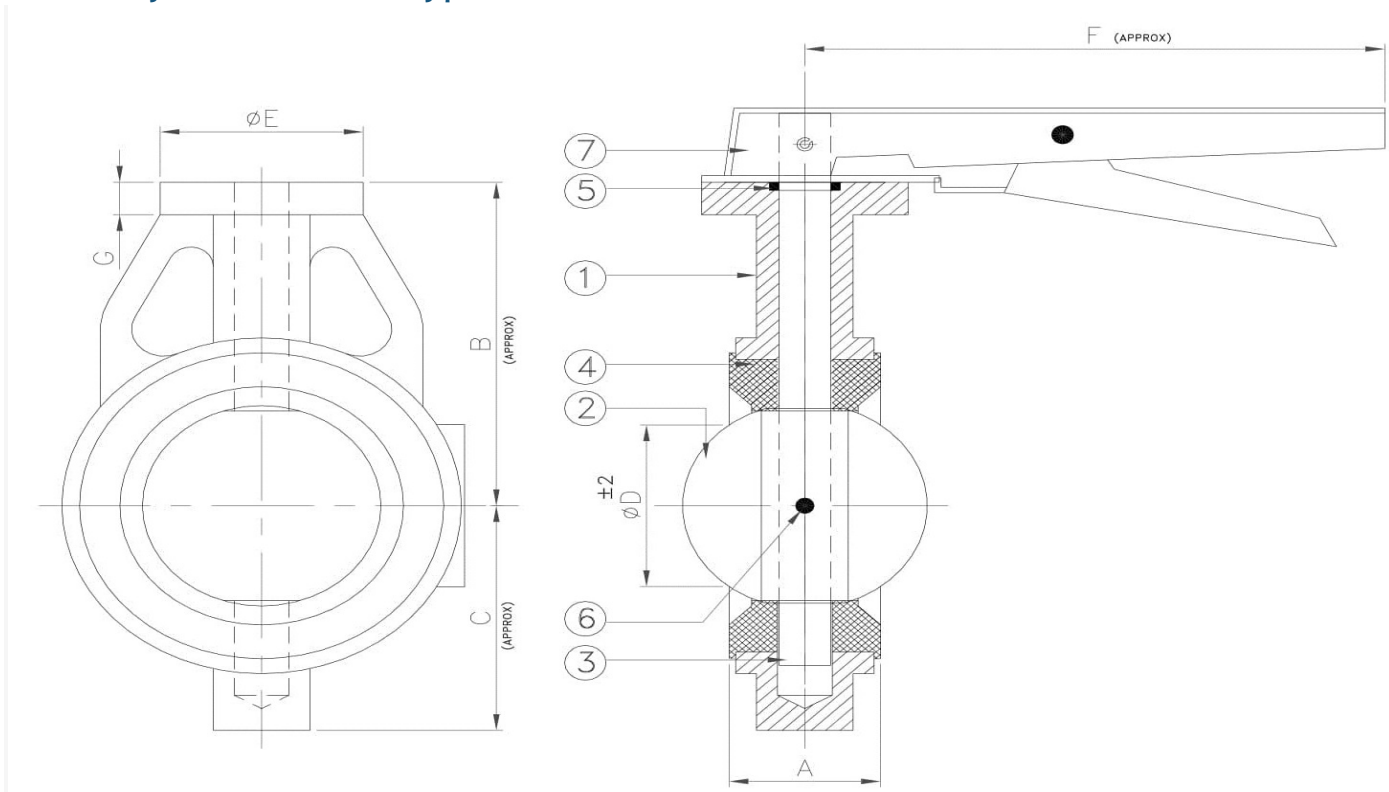


Butterfly Valve

Butterfly Valve Wafar Type



CONFORMITY TO CODES & STANDARDS

1. General Design & Manufacture :- BS 5155 / API 609 / EN 593 / IS 13095
2. Valve Face to Face Dimension :- BS 5155 / ISO 5752 / API 609
3. Top Flange Drilling :- ISO 5211
4. Valve Inspection & Testing :- BS 6755 Part-I / API 598 / EN 12266-1
5. Flange Standard Conformity :- ANSI 150 / ANSI 125 / BS 10 TAB D & E IS 6392 NP 0.6 / 1.0 / 1.6

ALL DIMENSION ARE IN MM.

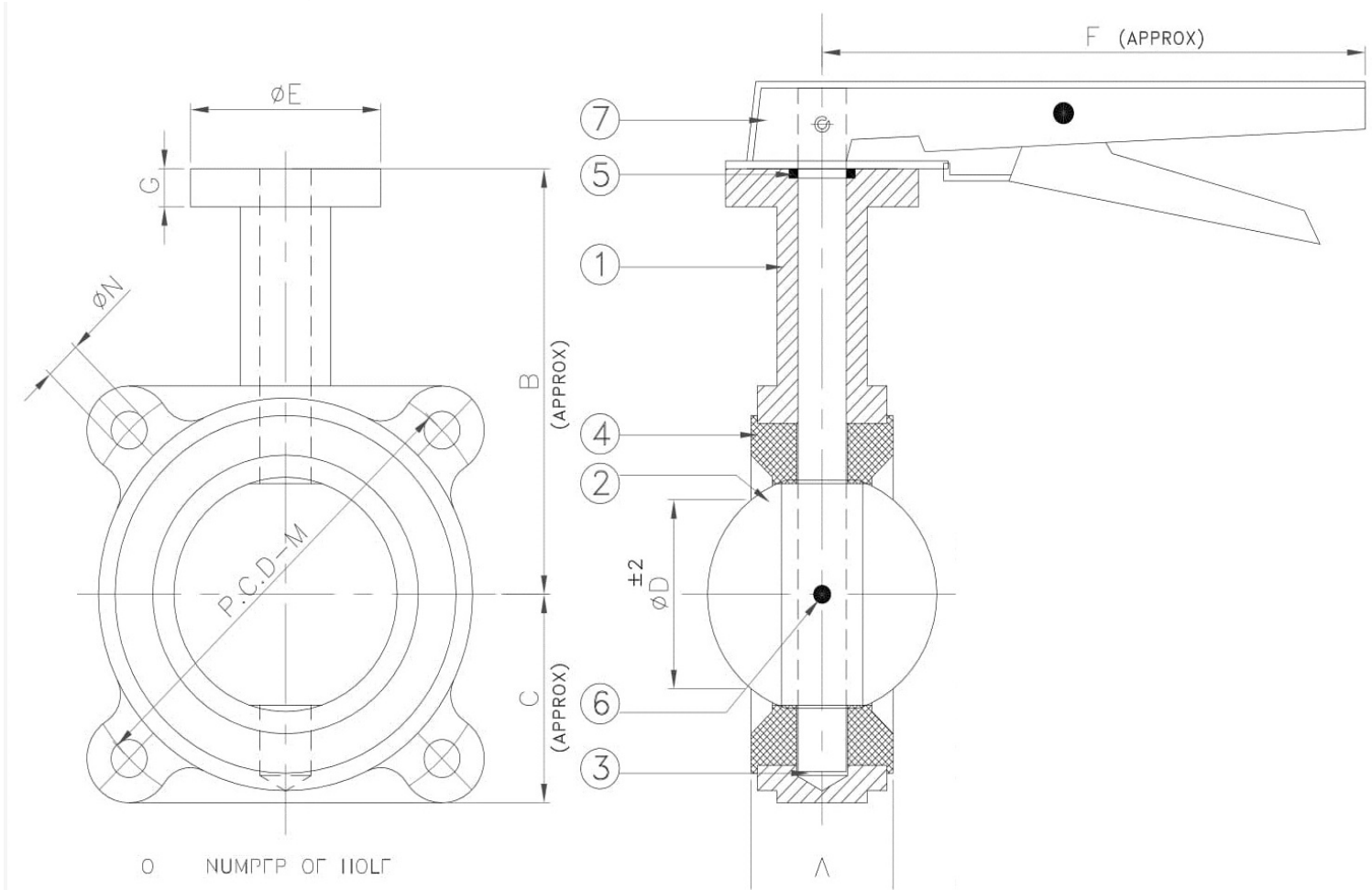
SIZE		A	B	C	D	E	F	G	FLANGE MOUNTING (I.S.O 5211)
MM	INCH								
40	1 ^{1/2} "	36	92	52	20	65	180	15	F05
50	2"	43	103	70	28	65	180	15	F05
65	2 ^{1/2} "	46	110	76	48	65	180	15	F05

MATERIAL OF CONSTRUCTION		
NO	PART NAME	MATERIAL
1	BODY	CAST IRON/CAST STEEL/S.S.304-316
2	DISC	CAST IRON/CAST STEEL/S.S.304-316
3	SPINDLE	SS 410/304/316
4	BODY LINING	NITRILE/E.P.D.M./SILICON/VITON/HYPALON
5	'O' RING	NITRILE/E.P.D.M.
6	PIN	S.S.304/316
7	LEVER	M.S.FABRICATED

SEAT TEMPERATURE RANGE		
SEAT TYPE	TEMPERATURE RANGE	
	MIN.	MAX.
NITRILE	-13F(-25C)	212F(120C)
EPDM	-13F(-25C)	250F(120C)
SILICON	-58F(-50C)	356F(180C)
VITON	-23F(-5C)	392F(200C)
HYPALON	-4F(-20C)	250F(120C)

TESTING				
PRESSURE RATING	HYDROSTATIC SHELL TEST		HYDROSTATIC SEAT TEST	
	Kg/CM2	PSI	Kg/CM2	PSI
PN16	22	310	16	225
PN10	15	210	10	140

Butterfly Valve Lug Type



0 NUMBER OF HOLES

CONFORMITY TO CODES & STANDARDS

1. General Design & Manufacture :- BS 5155 / API 609 / EN 593 / IS 13095
2. Valve Face to Face Dimension :- BS 5155 / ISO 5752 / API 609
3. Top Flange Drilling :- ISO 5211
4. Valve Inspection & Testing :- BS 6755 Part-I / API 598 / EN 12266-1
5. Flange Standard Conformity :- ANSI 150 / ANSI 125 / BS 10 TAB D & E IS 6392 NP 0.6 / 1.0 / 1.6

ALL DIMENSION ARE IN MM.

SIZE		A CATEGORY-A	A CATEGORY-B		B	C	D	E	F	G	FLANGE MOUNTING (I.S.O 5211)
MM	INCH	FACE TO FACE	FACE TO FACE								
			150#	300#							
40	1 ^{1/2} "	36	-	-	112	52	20	65	180	15	F05

50	2"	43	-	-	118	65	28	65	180	15	F05
65	2 ^{1/2} "	46	-	-	125	68	48	65	180	15	F05
80	3"	46	46	48	134	76	67	65	215	15	F05

NOTE:- M,N,O AS PER REQUIREMENT

M =

N =

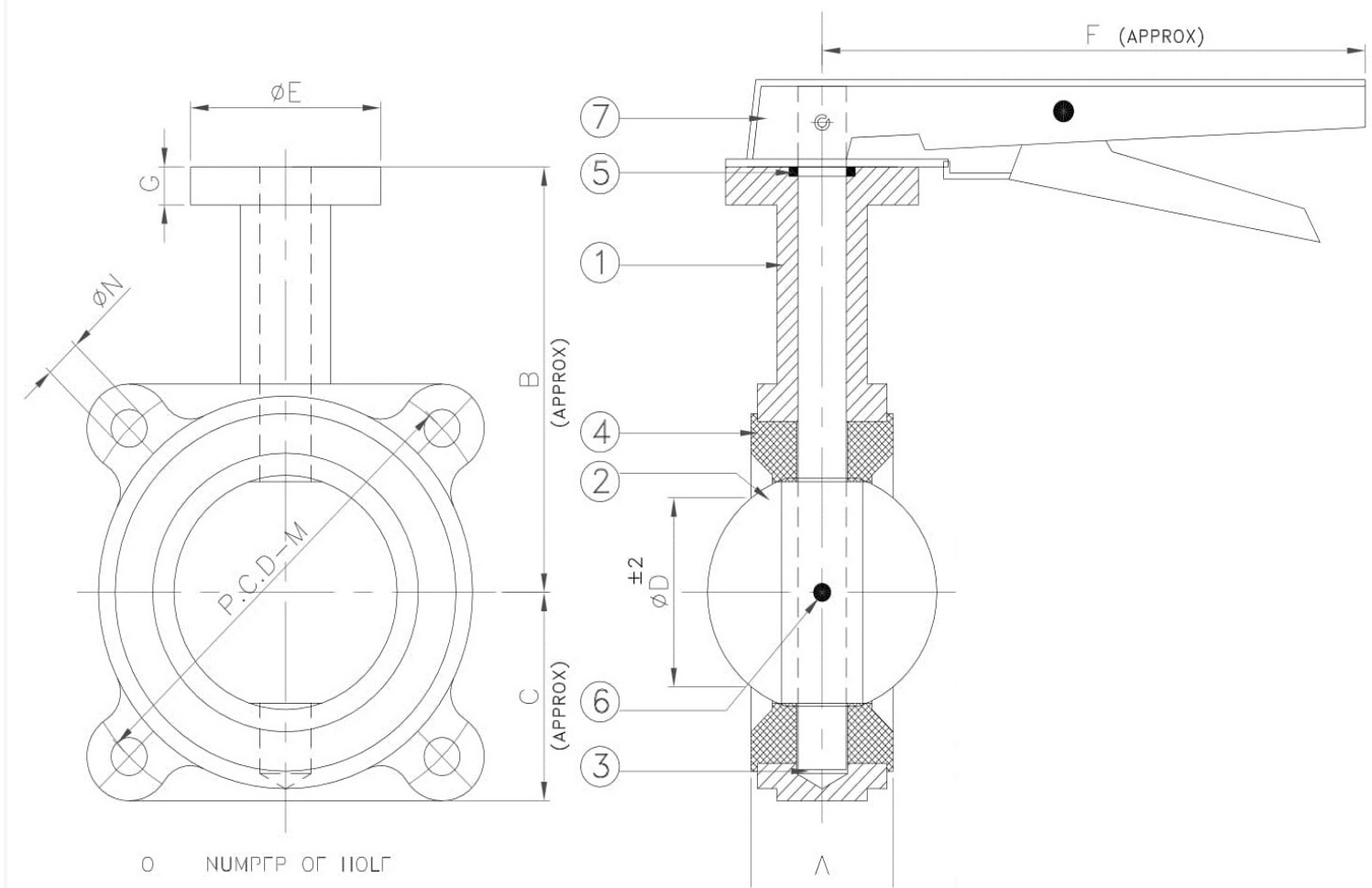
O =

MATERIAL OF CONSTRUCTION		
NO	PART NAME	MATERIAL
1	BODY	CAST IRON/CAST STEEL/S.S.304-316
2	DISC	CAST IRON/CAST STEEL/S.S.304-316
3	SPINDLE	SS 410/304/316
4	BODY LINING	NITRILE/E.P.D.M./SILICON/VITON/HYPALON
5	'O' RING	NITRILE/E.P.D.M.
6	PIN	S.S.304/316
7	HANDLE	M.S.FABRICATED

SEAT TEMPERATURE RANGE		
SEAT TYPE	TEMPERATURE RANGE	
	MIN.	MAX.
NITRILE	-13F(-25C)	212F(120C)
EPDM	-13F(-25C)	250F(120C)
SILICON	-58F(-50C)	356F(180C)
VITON	-23F(-5C)	392F(200C)
HYPALON	-4F(-20C)	250F(120C)

TESTING				
PRESSURE RATING	HYDROSTATIC SHELL TEST		HYDROSTATIC SEAT TEST	
	Kg/CM2	PSI	Kg/CM2	PSI
PN16	22	310	16	225
PN10	15	210	10	140

Butterfly Valve Lug Type



CONFORMITY TO CODES & STANDARDS

1. General Design & Manufacture :- BS 5155 / API 609 / EN 593 / IS 13095
2. Valve Face to Face Dimension :- BS 5155 / ISO 5752 / API 609
3. Top Flange Drilling :- ISO 5211
4. Valve Inspection & Testing :- BS 6755 Part-I / API 598 / EN 12266-1
5. Flange Standard Conformity :- ANSI 150 / ANSI 125 / BS 10 TAB D & E IS 6392 NP 0.6 / 1.0 / 1.6

ALL DIMENSION ARE IN MM.											
SIZE		A CATEGORY-A	A CATEGORY-B		B	C	D	E	F	G	FLANGE MOUNTING (I.S.O 5211)
MM	INCH	FACE TO FACE	FACE TO FACE								
			150#	300#							
40	1 ^{1/2} "	36	-	-	11	2	20	65	180	15	F05

50	2"	43	-	-	118	65	28	65	180	15	F05
65	2 ^{1/2} "	46	-	-	125	68	48	65	180	15	F05
80	3"	46	46	48	134	76	67	65	215	15	F05

NOTE:- M,N,O AS PER REQUIREMENT

M =.....

N =.....

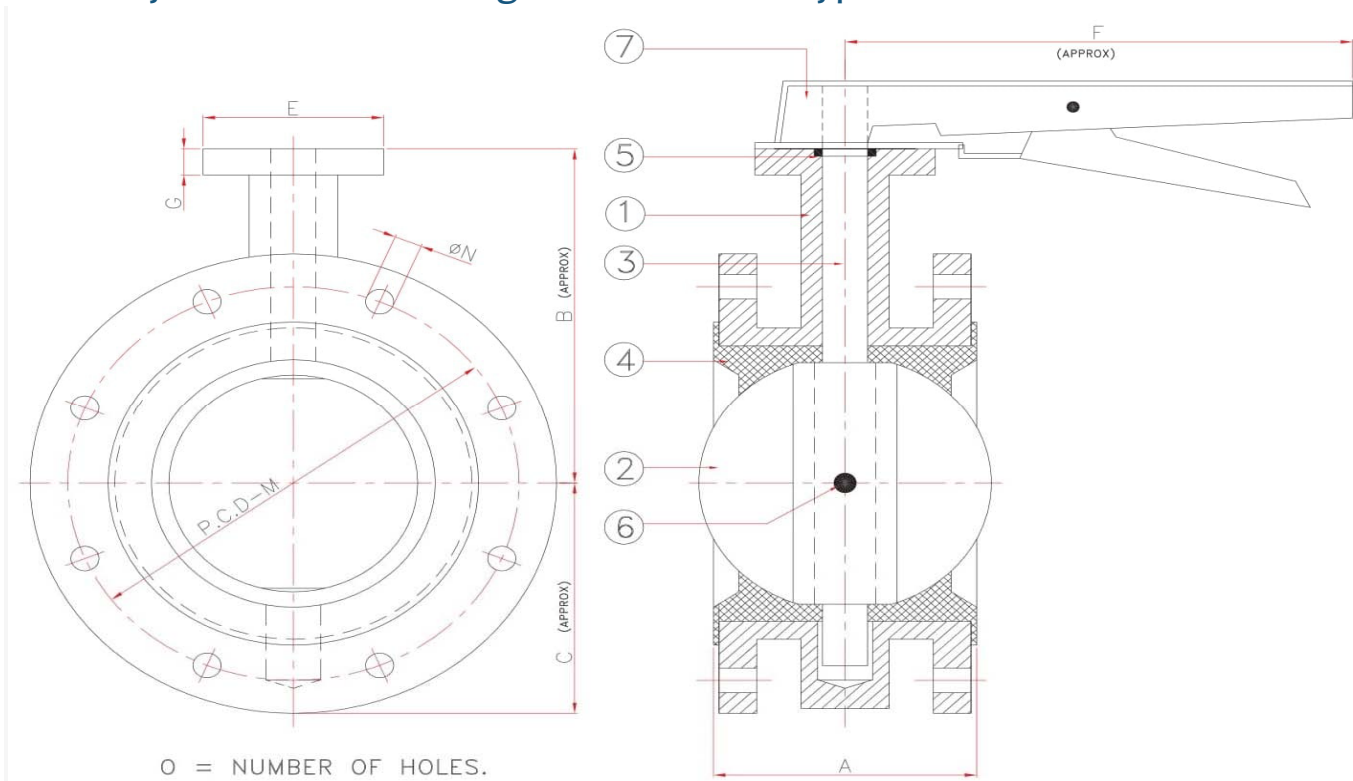
O =.....

MATERIAL OF CONSTRUCTION		
NO	PART NAME	MATERIAL
1	BODY	CAST IRON/CAST STEEL/S.S.304-316
2	DISC	CAST IRON/CAST STEEL/S.S.304-316
3	SPINDLE	SS 410/304/316
4	BODY LINING	NITRILE/E.P.D.M./SILICON/VITON/HYPALON
5	'O' RING	NITRILE/E.P.D.M.
6	PIN	S.S.304/316
7	HANDLE	M.S.FABRICATED

SEAT TEMPERATURE RANGE		
SEAT TYPE	TEMPERATURE RANGE	
	MIN.	MAX.
NITRILE	-13F(-25C)	212F(120C)
EPDM	-13F(-25C)	250F(120C)
SILICON	-58F(-50C)	356F(180C)
VITON	-23F(-5C)	392F(200C)
HYPALON	-4F(-20C)	250F(120C)

TESTING				
PRESSURE RATING	HYDROSTATIC SHELL TEST		HYDROSTATIC SEAT TEST	
	Kg/CM2	PSI	Kg/CM2	PSI
PN16	22	310	16	225
PN10	15	210	10	140

Butterfly Valve Double Flanged Centric Disc Type



CONFORMITY TO CODES & STANDARDS

1. General Design & Manufacture :- BS 5155 / API 609 / EN 593 / IS 13095
2. Valve Face to Face Dimension :- BS 5155 / ISO 5752 / API 609
3. Top Flange Drilling :- ISO 5211
4. Valve Inspection & Testing :- BS 6755 Part-I / API 598 / EN 12266-1
5. Flange Standard Conformity :- ANSI 150 / ANSI 125 / BS 10 TAB D & E IS 6392 NP 0.6 / 1.0 / 1.6

ALL DIMENSION ARE IN MM.

SIZE		A	B	C	E	F	G	FLANGE MOUNTING (I.S.O 5211)
MM	INCH							
50	2"	108	125	85	65	180	15	F05
65	2 ^{1/2} "	112	135	95	65	180	15	F05
80	3"	114	155	102	65	215	15	F05
100	4"	127	160	112	65	215	15	F05
125	5"	140	180	134	65	265	15	F05
150	6"	140	210	147	65	265	15	F05

200	8"	152	250	175	75	325	15	F07
-----	----	-----	-----	-----	----	-----	----	-----

NOTE:- M,N,O AS PER REQUIREMENT

M =

N =

O =

MATERIAL OF CONSTRUCTION		
NO	PART NAME	MATERIAL
1	BODY	CAST IRON/CAST STEEL/S.S.304-316
2	DISC	CAST IRON/CAST STEEL/S.S.304-316
3	SPINDLE	SS 410/304/316
4	BODY LINING	NITRILE/E.P.D.M./SILICON/VITON/HYPALON
5	'O' RING	NITRILE/E.P.D.M.
6	PIN	S.S.304/316
7	HANDLE	M.S.FABRICATED

SEAT TEMPERATURE RANGE		
SEAT TYPE	TEMPERATURE RANGE	
	MIN.	MAX.
NITRILE	-13F(-25C)	212F(120C)
EPDM	-13F(-25C)	250F(120C)
SILICON	-58F(-50C)	356F(180C)
VITON	-23F(-5C)	392F(200C)
HYPALON	-4F(-20C)	250F(120C)

TESTING				
PRESSURE RATING	HYDROSTATIC SHELL TEST		HYDROSTATIC SEAT TEST	
	Kg/CM2	PSI	Kg/CM2	PSI
PN16	22	310	16	225
PN10	15	210	10	140

Butterfly Valve Double Flanged Eccentric Disc Type

