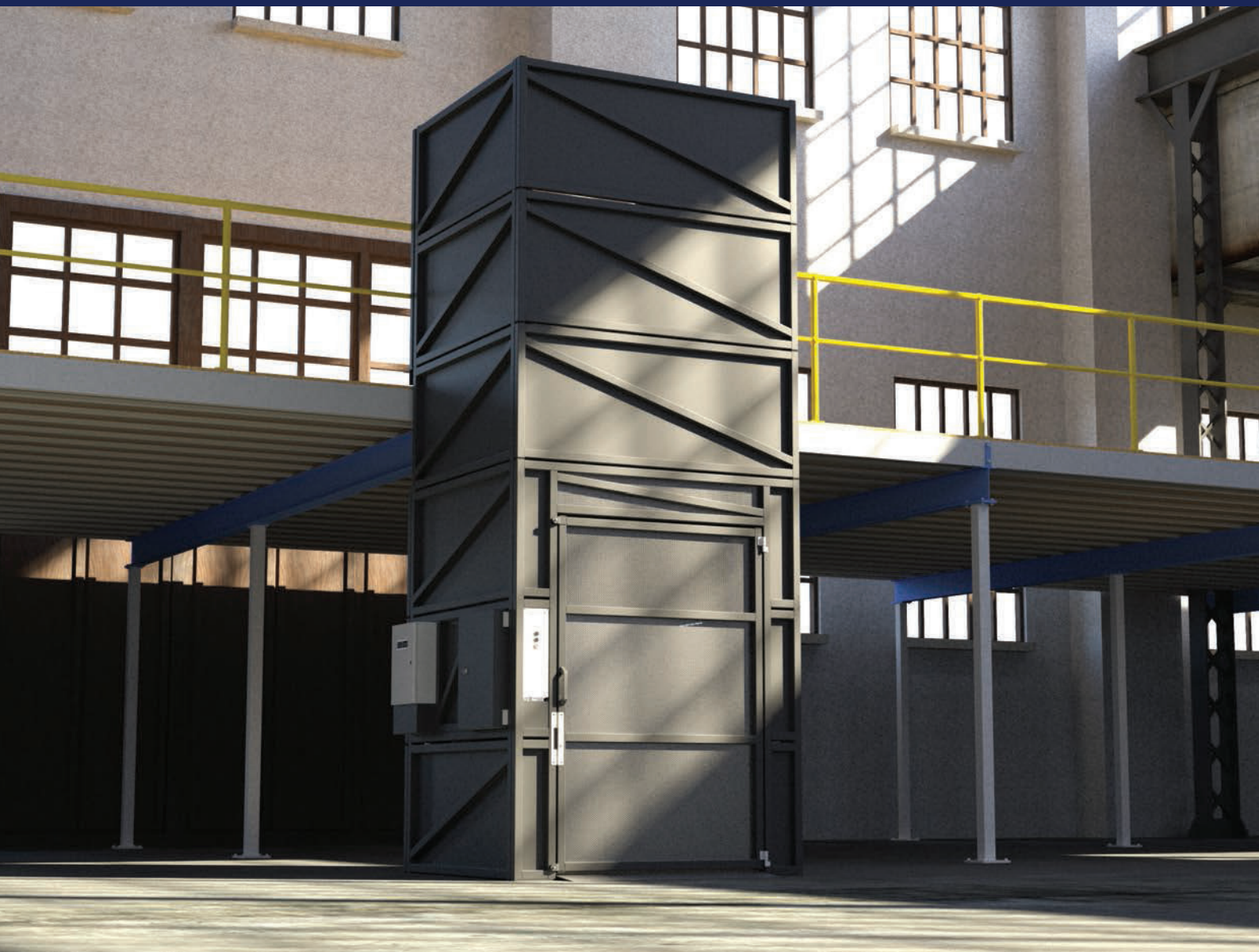




# Freight Mate



Move goods between floors simply and efficiently with Freight Mate

**Compact Freight Hoist**

# Overview

## What is a Safetech Freight Mate?

Safetech Freight Mate is the compact, modular solution to goods movement in any building that requires transfer of product between floors.

With 1,500 kg capacity and up to 4,800 mm of travel, Freight Mate provides users with a safe and ergonomic lifting solution. It can eliminate the need for forklifts to load mezzanines and creates a much safer, worker friendly environment.

Freight Mate's unique pitless design means you can buy and install without any need to prepare or cut a concrete pit. No on-site welding or building anchoring is required. This makes it much easier to fit into existing buildings with difficult access.

## Highlights

- Custom floor to floor heights
- Intuitive simple to use controls
- Roll On – Roll Off with ease
- Lower cost alternative to traditional freight hoists
- Free Standing and self supporting



\*Premium blue with powder coat yellow doors shown

## Applications

The pitless design, with customisable floor to floor heights, can easily integrate into almost any space. It is suitable for moving goods only in retail, warehousing, apartments, hospitality and other harsh workshop environments.



## Colour

Standard colour is Colorbond Monument in a satin finish. Premium and custom colours available upon request.



# Sizes & Specifications

## Size Options

Each model of Freight Mate is capable of servicing any floor-to-floor distance within its specified range, without the need for special parts to be manufactured. Setup only requires Safetech to adjust the height of the upper landing gate on site.

\*Transparency is for reference only.



## Overall Specifications

<b>TRAVEL SPEED</b>	3.5m/min (58mm/s)
<b>PLATFORM SIZE (WxL)</b>	1420mm x 1600mm
<b>OVERALL FRAME SIZE (WxL)</b>	1976mm x 1772mm



## Flexible Design

Freight Mate's modular design provides for custom installation and delivery options to maximise efficiency and minimise site disruption.

### FULL FLAT PACK

Safetech delivers a fully dismantled machine for assembly on site. Ideal for sites with limited access and established buildings.

### PARTIAL FLAT PACK

All components below 2400mm are assembled prior to shipping, Combines the efficiency of factory assembly with smaller components for sites with some access problems.

### PRE-ASSEMBLED

The Freight Mate is assembled in 1-3 large pieces prior to shipping, Full factory assembly provides quick and easy installation on clear access sites.

# Options



## Remote Power Unit

Available for both 3 phase and 1 phase configurations. Including electrical cabinet.



## Same Side Entry

3200-4800 models only, includes rear booth wall.



## Full Height Upper Gate

Includes full height Booth walls and shell walls

Adds 800mm to overall height.



## Full Height Double Gate

In lieu of single side opening gate at lower landing.

Adds 800mm to overall height over a standard gate at the upper landing.



## Custom Car Booth Lining

Custom material finishes inside the car booth are available upon request, ask one of our sales staff for more information.

Options include stainless steel lining or timber bump rails.

## More Information



### FREIGHT HOIST

For an integrated, high capacity lifting solution, with all the finishes expected of a customer facing product, consider the Safetech Freight Hoist.

Get in contact for more information.



### MATERIALS HANDLING

Safetech design and manufacture a wide range of Materials handling products to suit a variety of needs, including static, mobile and heavy capacity scissor lifts.

Our range of brochures have all the critical information you need to choose the right lifting solution for your business.

PROUDLY DISTRIBUTED BY:



Matpack Limited

59A Mahunga Drive  
Mangere Bridge 2022  
Auckland, New Zealand

P + 64 9 413 6405 W [matpack.co.nz](http://matpack.co.nz)



Servicing customers across Australia and New Zealand