



# ROCK DRILLING SOLUTIONS



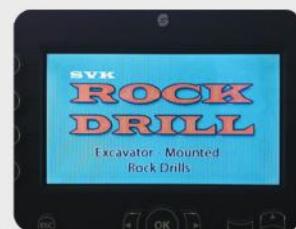
WORLD CLASS QUALITY & PERFORMANCE

**SVK ROCK DRILL PYT. LTD**





**RD-27M**



RockDrill units are equipped with the AutoDrill Automatic Drilling System. One of the most significant advantages of AutomaticDrill is the fact it makes it a lot easier to learn the specifics of drilling process, thus enabling more efficient use of the machinery.

The direction of drilling is controlled from the display unit. The drilling process starts at half power and reaches the maximum performance gradually and automatically.

The Automatic Drill system immediately reacts to changes in the rock. The system monitors the drilling resistance and when the resistance grows it automatically readjusts the drilling parameters. This feature makes the holes straighter and reduces the drill tool wear.

Due to the Automatic Drill system the drilling efficiency has increased, especially when drilling in fragmented rock. No special professional skill is required anymore to obtain straight holes.

The CANOpen technique used in the RockDrill attachments together with the Automatic Drill system allow various adjustments, such as the fine-tuning of pressure during drilling, automatic stop defined by preset drill depth, various data readouts, remote maintenance, etc. The system is even capable to control itself.

The graphic display of Rock Drill is user-friendly. The angle and depth measuring system is included.

Rock Drill can be also equipped with a video monitoring camera. This allows the remote visual control of the drilling process on graphics display

The graphic display of Rock Drill is user-friendly. The angle and depth measuring system is included.

Rock Drill can be also equipped with a video monitoring camera. This allows the remote visual control of the drilling process on graphics display



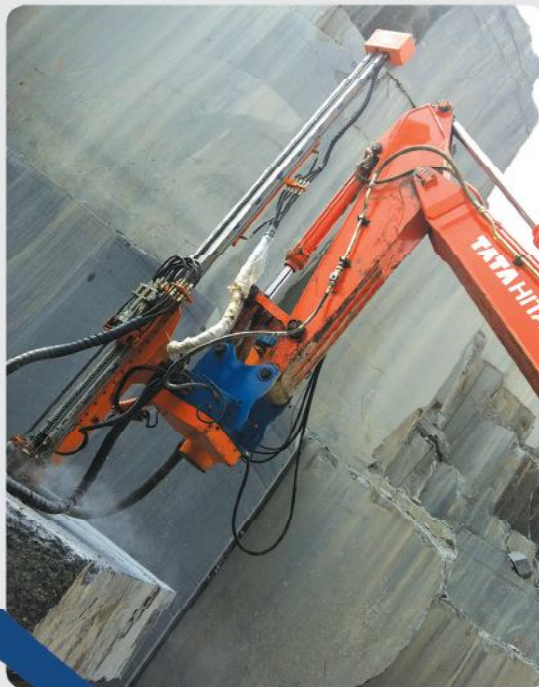
**SVK Rock Drill Pvt. Ltd**

## RD-27M

The Rock Drill 27 is designed for drilling operations in towns and also for construction of canals and roads with the hole diameter range of 27-45 mm.

Like other units in the Rock Drill range, the 27 model is supplied as ready to use.

Due to its lightweight design, the Rock Drill 27 can be mounted on excavators weighing 14t or more.



# RM-270S



**SVK Rock Drill Pvt. Ltd**

# RM-270D

SM200 is hydraulically operated, excavator mounted splitting and line drilling unit for dimensional stone quarries.

It drills vertical aligned holes with maximum recommended hole diameter of 38 mm (1 1/2") utilizing 19 or 22 mm (3/4" or 7/8") hexagonal drill steels.

All drilling functions can be executed from a remote control box. Thanks to the electronics, there are fewer levers to make it easy to use.

For high efficiency SM200 is equipped with two pieces hydraulic top hammer rock drills with antijamming automatics.

The rock drills are mounted on aluminium / iron chain feeds, which are attached to a frame giving 3 150 mm line drilling capacity.

The frame can be rotated 80° vertically and 30° horizontally and extended 200 mm from the ground pin without moving the boom



**SVK Rock Drill Pvt. Ltd**



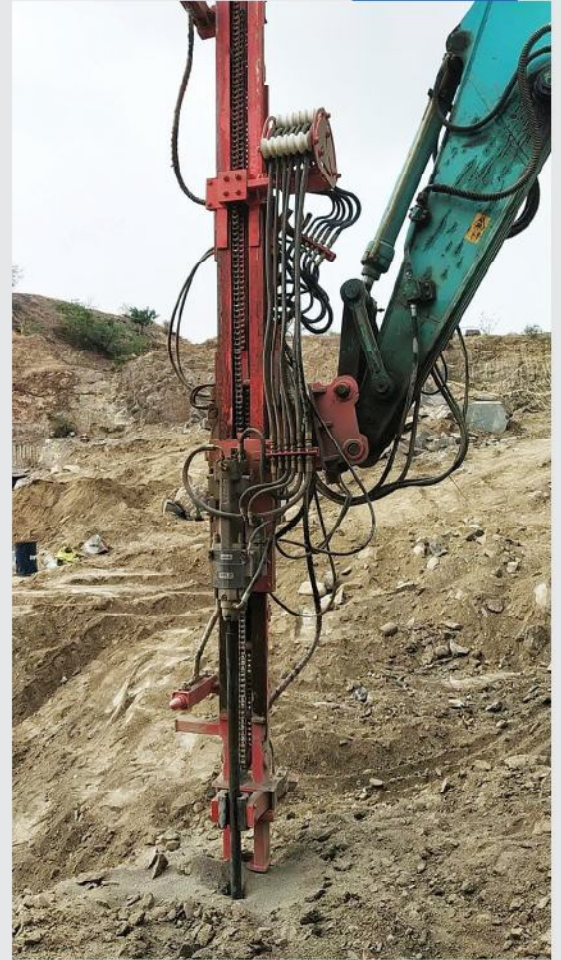
## DTH-100

### BENEFITS

- Drills straighter holes
- Low positioning time and low fuel consumption.
- Capable of drilling holes just 3" from the ground of the hole.

### COMPONENTS

- Dust collector(Optional)
- Remote control (RC) on touch screen control
- Rotation unit designed for rock drilling application
- Feed unit.



THE DRILL DESIGN FOR THE DIMENSION STONE INDUSTRY. IT IS CAPABLE OF DRILLING VERTICAL AND HORIZONTAL HOLES THAT ENABLE WIRE CUTTING.

**SVK Rock Drill Pvt. Ltd**



#### Technical details:

**ATTENTION :** the hydraulic values indicated here after are not to be considered for the regulation of the excavator- please use the instructions

TECHNICAL DATA	RD-27M	RD-27C	RM270S	RM270D	RD100	DTH 100
ROCK DRILL	10 KW				17 KW	DTH
WEIGHTE (KG) INSTALLATION PACKAGE	600-990			1100-3600	1400- 2700	
HYDRAULIC COMPRESSOR (M3/MIN) FOR AIR FLUSHING UP TO 8-10 BAR	0.7-1.6			2.5-3.5	3.7-6.8	8.3-11.7
DUST COLLECTING SYSTEM	4.3 M2	***	4.3 M2	7.2 M2	***	***
CARRIER TO *	> 14 *			>20*		
DRILLING DIA MAXI **	22-45 MM (7/8"-1 3/4")				2-3"	3-5"
STANDEARD ROD	22-7/8"				R38	3"
ROD LENTH (MM)	4000					
TOTAL LEANTH	4950					
OIL SUPPLY (l/min)	160@ 180 BAR			260@ 200 BAR	280@ 220 BAR	260@ 220 BAR
OIL PRESSOR AT THE EXCAVATOR(BAR)	200-220			220		
CONTROLE SYSTEM						
Radio remot control	***		YES		***	
Anti-jaming automation	YES					NO
FURTHER FUTERS						
Angle display	YES	***	YES		***	
Plc automatic	YES					
Long distance maintenance/modem error dignosis	***					

\* the minimum weight depends on the excavator. The chosen excavator must be checked as to pumpdelivery volume, pump capacity of the equipment, sufficient motor performance and liftingcapacity. \*\* the first value is the diameter for drilling, the second value is for anchoring.\*\*\* OPTIONAL

**SYK Rock Drill Pvt. Ltd**



website : [www.svkrd.com](http://www.svkrd.com)  
e-mail : [svkrockdrills@gmail.com](mailto:svkrockdrills@gmail.com)

**SVK Rock Drill Pvt. Ltd**

Plot No. 85, Rajiv Gandhi Nagar I.E. Kukatpally, Hyderabad-72  
Mobile : 94406 16488, 9000852555