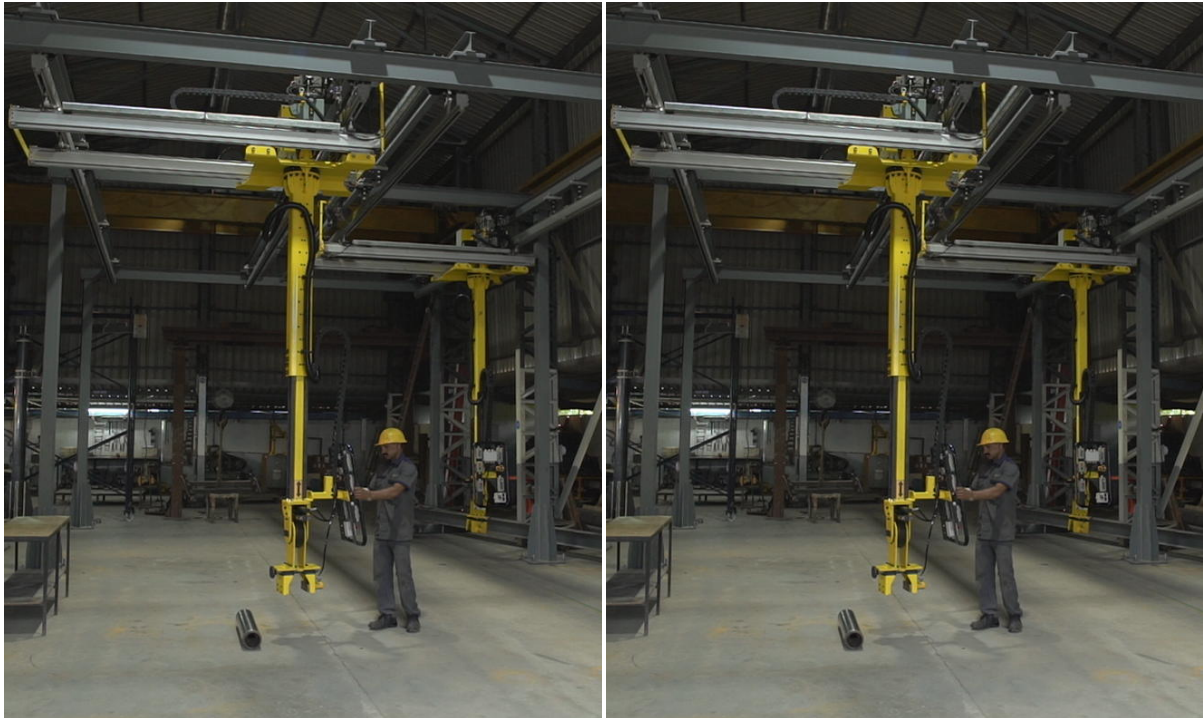


Gantry System

Description

What is Gantry System?

Gantry system basically consists of an overhead structure to support lateral movement of lifting & handling equipment mounted on the structure. This attached lifting equipment mounted with rail or trolley mechanism.



Jaycee manufactures the single as well as multi-axis component handling gantry systems with capacity up to 1000 Kg. We develop the systems for light to heavy duty component handling. This system covers the cubic envelope in workspace that allows efficient handling and placement of components. Gantry systems provide flexible and efficient loading and unloading of material from bins, pallets and from transport vehicles. Gantry systems have an extensive scope of applications in numerous industries. Because of their accuracy and precise operating system it is used with a variety of end effectors such as laser cutting, glass cutting, scanning, printing plotting, material handling, loading and unloading system.

Features

- Lateral movements perfectly guided by precision machined beams or precision extruded sections
- Integration with fixtures is possible as per customer requirements
- Specialized grippers with electro pneumatic system