

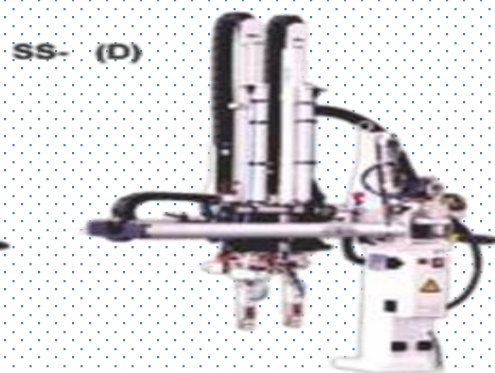
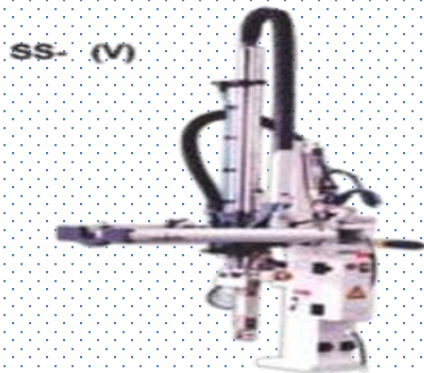


Peculiar Plastic Machinery

EMAIL-peculiarplasticmachinery@gmail.com

MOB- +91 9999229874 , +919999829874

www.peculiarplastic.com



Mould Clamp
 Hot Air Dryer
 Cabinet Dryer
 Chiller
 Cooling Tower
 Temperature control unit
 Central Conveying System
 Auto Loader
 Granulator
 Manifold
 Metal Separator



Auxiliary Solution's

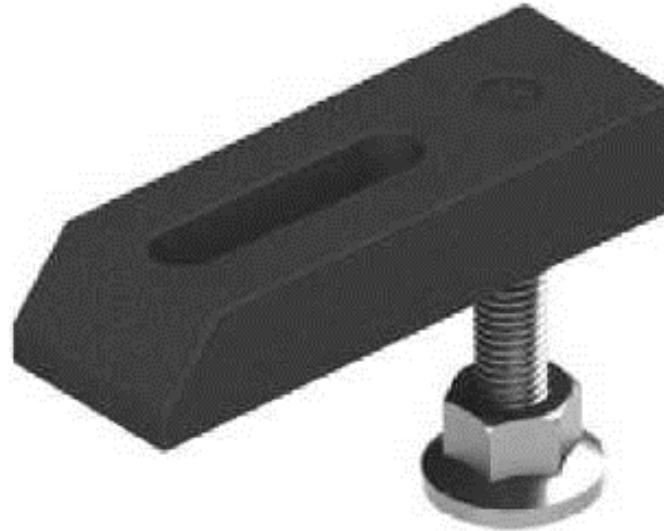
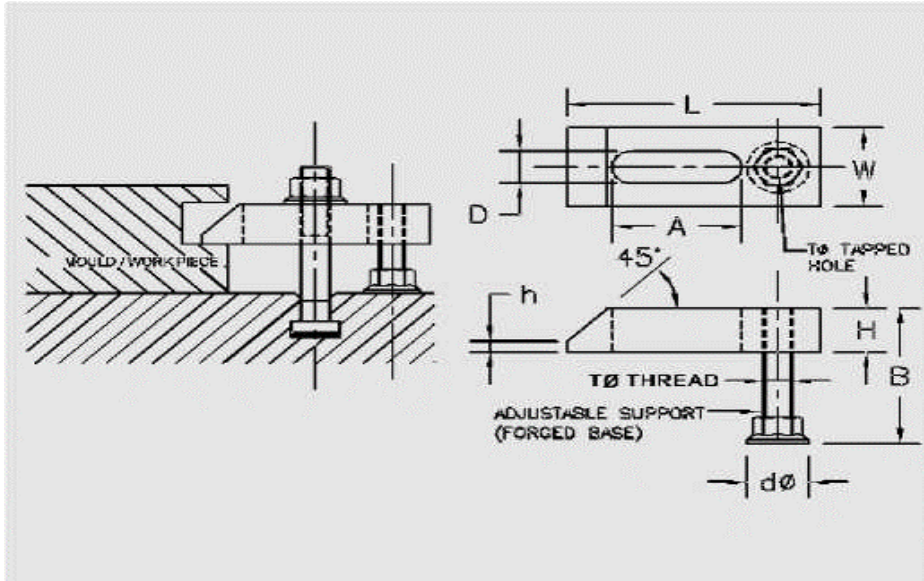
Complete Auxiliary Setup



Mould Clamp

Hardened & Tempered, Black Finish

Tapped End Clamps are most useful clamps for injection moulding or pressure die casting machine where mould/die is in vertical position, these clamp have adjustable support to adjust the thickness of mould plate.

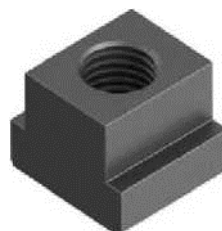


For Plastic Injection Moulding & Pressure Die Casting Machines

It is one of the conventional type clamping system made up of S.G.I steel in 500/7 grade.

Used in clamping of heavy i plastic injection molding machines and pressure die casting machines.

It comes with forged stopper bolt for adjustment and special washer at top of clamp to move the bolt in slot at desired portion. It is used to clamp differe moulds on same machine through it height adjustment feature. It helps save the time of the operator while changing on machine therefore increase the productivity



Hopper Dryer

PPM's energy efficient hot air dryers cover a performance range from 15 to 2000 kg. The dryers can be mounted directly on the throat of the processing machine or on a support frame beside the machine. All models have a micro-processor controlled temperature regulator and are equipped with a safety thermostat to prevent overheating of materials. The use of corrosion resistant materials ensures a long lifetime and avoids contamination.



Cabinet Dryer

The oven dryer is probably the simplest method used for drying resin. Resin is spread out evenly on a tray and 'cooked' in an industrial oven, in an effort to remove surface moisture.

In addition to our standard models SD-5 and SD-9, we offer different models specially custom built to suit customer requirements.

We also design & manufacture Industrial ovens for component heating especially suited for medical, automotive & packaging applications.



Granulator



SG- BP series beside-the-press slow speed granulators are available in a broad range of sizes and throughputs. Double-walled base and low rpm results in quiet operation. High-torque standard-speed configuration produces high regrind quality. Unique hopper access door speeds cleanout. Units available in several configurations, rotor types, hopper types and motor size.

The SG-FET series of medium speed granulator for superior quality and performance for a wide variety of applications. Available with staggered blade design and throat sizes of 200 x 180mm to 200 x 420mm.

Large and Medium tangential SG-F series granulators with high speed are suitable for bottles and other bulky shapes. Cutting chambers of Large-part central granulators suitable for high-volume recycling of purging's, pipe, and thick-wall parts. Fourteen models of open, solid, or staggered rotor designs. Cutting chambers from 200 x 300 mm to 660 x 1000mm.

SLS Light Duty Shredder for processing injection and extrusion mold startup purge;

SMS Single Shaft Shredder for processing scrap from wood industries such as miscellaneous trim, panel scraps, furniture, heavy wall parts, paper, cardboard and film (baled or loose);

SPS Series Pipe Shredder for reduction of pipes up to 47" (1200mm) in diameter, and 25' (7.6m) in length from materials such as UPVC, PE and PP; and

SXS Series single shaft shredder is designed for processing plastic waste for reclamation and recycling of large extruder purgings, large rejection parts, trim scraps, baled or loose film, synthetic fiber, wood processing scrap, medical waste, cardboard, paper and carpe

t.



Auto Loader

High Speed Commutator Motor.

Micro Computer Control to accurate start and stop.

Electronic action detector and low fault rate.

For conveying Wide variety of Polymer.

Conveying Capacity from 250Kg/Hr . to 1000Kg/Hr .

Three phase motors for long service life.



Granual Mixture

Double layer stainless steel, vertical design fast and even stirring.

Directly driven by the motor and high stirring efficiency.

Automatic stop device, automatic stop in 0-30 minutes can be set.

Multi safety protection device to ensure the operator safety.



Robots

We offer a wide range of automation technology for the plastics industry, ranging from individual part-removal robots and end-of-arm-tooling to fully integrated factory automation for assembly, decoration, inspection, and packaging.

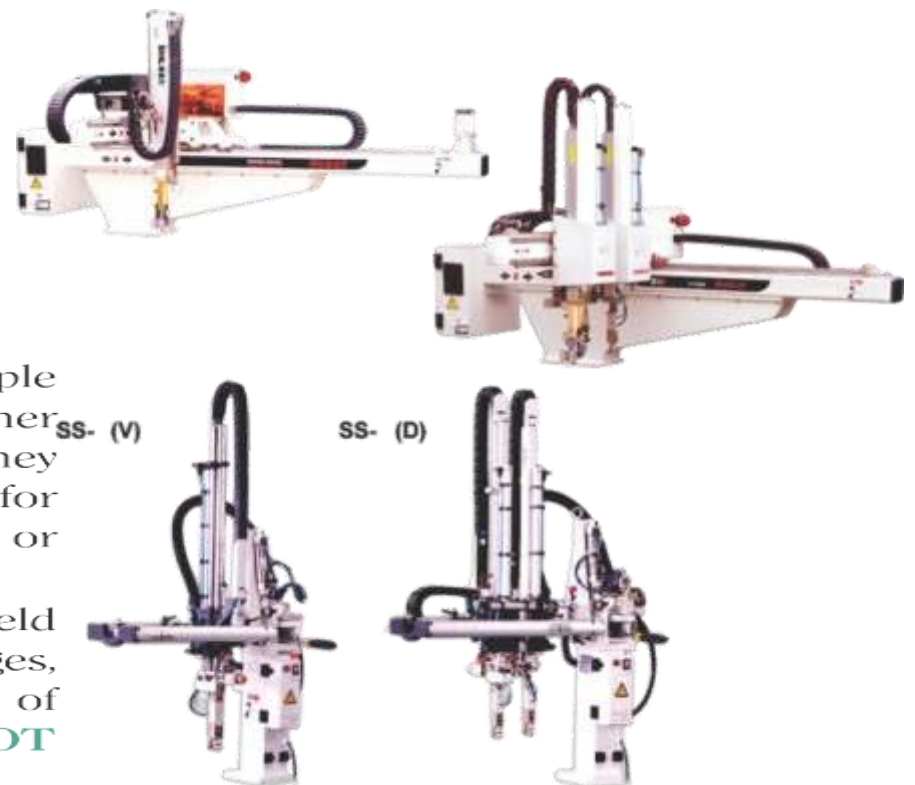


APM Sprue Pickers are simple designs compared to our other robot models, which means they are quick and very cost effective for

the important task of removing waste sprues or small products from injection molding machines.

The operation panel of our Robot Line is a handheld control system and you can select multiple languages, view powerful function, and support many group of extension input/output to improve the **ROBOT** performance.

Our robotic line has the **CE** standard complying with **EUROMAP** or SPI rules



Chillers

- PPM supply Portable and central chilling system in both air cooled and water cooled type from 2 tons to 50 tons . Chillers have compressor and control technology to match process application.
- PPM portable chillers from 0.5 to 30 hp supply chilled water from 7°C to 18°C in a variety of flow rates and pressures, using single and dual pumps. PID auto tuned microprocessor controls ensure accuracy to $\pm 1^\circ \text{C}$. Many models feature scroll compressors for lower operating costs.
- PPM central chilling systems are available along with comprehensive systems design and installation services. A central chilling station includes tank, refrigeration system, control system and pumping system in a small footprint with lower installation costs.



Cooling Tower



Metal cooling towers from 10 to 2000 tons and fiberglass units from 20 to 300 tons. Equipment, chemicals, and testing programs offered. Cooling towers, water reservoir and pumping systems, water filtration and treatment equipment available.

Its Benefits:

- Corrosion Resistance
- Environmentally Safe
- Non Conductivity
- Light Weight
- Ease of Maintenance
- Modular Evaporation Panel
- Consistent of Structural
- Low life Cycle Cost

Temperature control unit

PPM offers Water and oil circulating temperature control systems for standard and high-temperature applications to 300° C.

Line of compact temperature control units with 6, 9, 12 and 18 kW heaters and pumps from 0.75 to 5 hp.

Many models feature simplified internal cast or nonferrous fluid circuit with 20% fewer connections and 40% fewer mechanical parts than conventional designs. Simplified design provides balanced flow with lower pressure drop. Most of the co

mic



Hot Runner Controller

PPM-IBS is the absolute reference for modular and multi-zone Hot Runner temperature controllers, earning a reputation for innovation, robustness, and quality over the past 10 years.

In order to help our customers make great progress in production management and production efficiency, we have several different series, which are all super-quality, reasonable price and enthusiastic service. By now, we have done business with many international famous corporations, and received very good

evaluation.

DXC-MTC-> Touch screen controller panel . Control zones-> 2-128 nos

DXC-TTC-> One card control , 2 zones, Control zones-. 2-64 nos

DXC-TC->Multi function system, Control zones -> 1-60 nos

DXC-ETC->Multi function system with softtouch



Dosing Unit

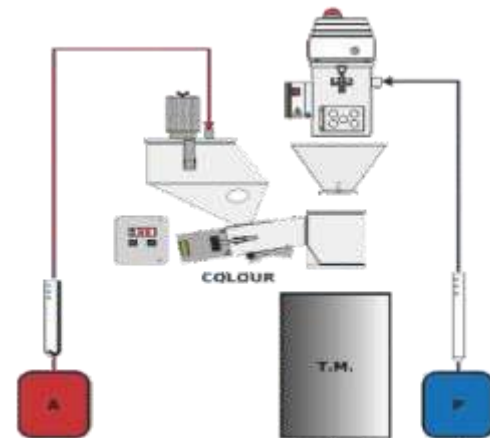
Products include digital dosing systems, volumetric additive feeders, and a variety of batch and continuous gravimetric blenders.

Volumetric Dosing

- Step by step motor for a wide range of production from 0.08kg/hr. to 15kg/hr. with same screw
- Easy mounting system to move very fast the unit from one machine to another
- Noise level(<60db)
- Memory to record 50 recipes for the future use.

Gravimetric Blenders

- Dosing plastic materials by weight control technology, with an accuracy of 1/100 gm
- Auto-Adapting and constant dosing which ensure accuracy
- Touch screen plug interface
- Regrind management as design of the valve in the bottom of hopper is different for virgin and regrind material, in order to guarantee the best performance in recycling.
- All construction and material contact part are stainless steel.



Central Conveying System



Need of Central Conveying System

As processors grow, they usually find that having multiple loaders drawing material from multiple day bins to multiple drying hoppers starts to clog the production area. It also requires material handlers and space to run forklifts. Production space should be used for production.

Material waste is a big issue – and dangerous when spilled on the floor. Then there is the energy issue. Add up the Kw used by all those small loader motors and compare that to the power used by one or two central pumps. The energy savings is considerable.

Ultimately, a central resin handling system – possibly with one or more central dryers is usually the most economical, energy-saving way to make your processing plant more productive and more competitive.

New or replaced plastics conveying systems can financially benefit a plastics processing operation by reducing part rejects and labor, material, and energy costs. An upgrade can eliminate line plugs and

improve the quality of your product and reduce delivery times. Not to be overlooked are a reduction of safety hazards, machine downtime, and maintenance requirements

SYSTEM COMPONENTS

Tubing Bends Couplers and Flexible Hose

There are a myriad of components through which resin and air are transferred in a central resin conveying system. Each component is chosen by our systems engineer, based on the resin being transferred, the velocity and the distance. The following list shows some of the typical components used but others are available if your material is highly abrasive or powdery or particularly soft and prone to producing angel hair.

Typical offerings:

Vacuum Pumps

Vacuum pumps are the heart of any resin conveying system – providing the vacuum to pull resin through your system from each source to each destination. An integral filter and an external CYCLONE DUST COLLECTOR ensure to keep stray dust and fines out of the vacuum pump. A highly effective cyclone dust collector is an important component to ensure extended pump life. It should remove 99.9% of dust and fines from the airstream. At PPM we have several types of pumps from which to choose and multiple sizes within each type. Our resin-handling specialist advise us when choosing this important component of your handling system. So you can be assured of trouble free life in years to come.

Controllers OMROM or SIEMENS. (LCD and TOUCH SCREEN Display available.)



■ Reduction in waste & rejections with proper solutions in blending/ mixing, granulation & conveying.

Manifold

Are you looking for a flexible water manifold system? The **APM EURO** Series water manifold is exactly what you expect from us. The **EURO** Series delivers superior design and flexibility to meet the most demanding applications.

- Chemical compatibility
- Corrosion resistant
- Leak tested
- Custom designs available
- Mounting brackets included
- Brass end plug included (NPT only)
- Optional flowmeters and ball valves
- Many sizes stocked for quick delivery
- 304 stainless steel construction



Metal Separator

All Metal Separator detects and removes even the smallest magnetic and non-magnetic metal particles from regranulates, virgin material and other bulk materials

- reduces production downtimes and damage to machinery
- reduces costs and increases productivity
- ensures metal-free bulk materials

Our RAPID Compact metal separators remove magnetic and non-magnetic metal particles (steel, stainless steel, aluminium, etc) from free-falling bulk materials.



Spare Parts & Accessories

Electronic Controllers- Fuji, Omron, Gefran, Etc

Screw & Barrel Assembly- As Per Customer Requirement.

We Have Ready Stock Of Ring Plungers Available. Electrical

Components- Thermocouples, Thermostats, Heaters

Available Ex-stock

Consumables- Filters Can Be Provided As Per Your Requirement

Some of the installation Images



COMBO D R Y E R (D E H U M D I F I C A T I O N + C O N V E Y I N G)

| Model No | Capacity (L) | Dry Blower (m³/hr) | Power of Heater (kw) | Power of dry blower (kw) | Power of rey. blower (kw) | Power of air pump (kw) | Power of rey. heater (kw) | Pipe diameter (mm) | Dimensions L*W*H | Weight (Kg) |
|-----------------|--------------|--------------------|----------------------|--------------------------|---------------------------|------------------------|---------------------------|--------------------|------------------|-------------|
| SLH-40L/80 | 40 | 40 | 5 | 0.55 | 0.37 | 1.1 | 5 | 38 | 700*1200*1215 | 280 |
| SLH-80L/80 | 80 | 80 | 5 | 0.55 | 0.37 | 1.1 | 5 | 38 | 700*1200*1215 | 319 |
| SLH-120L/100 | 120 | 100 | 7 | 1.1 | 0.37 | 1.1 | 5 | 38 | 700*1200*1215 | 350 |
| SLH-160L/100 | 160 | 100 | 9 | 1.1 | 0.37 | 1.1 | 5 | 38 | 800*1350*1300 | 380 |
| SLH-230L/120 | 230 | 120 | 9 | 1.5 | 0.37 | 1.5 | 5 | 38 | 800*1350*1300 | 421 |
| SLH-300L/150 | 300 | 150 | 12 | 1.5 | 0.55 | 1.5 | 7 | 38 | 900*1500*1450 | 417 |
| SLH-380L/200 | 380 | 200 | 14.5 | 2.2 | 0.55 | 1.5 | 7 | 38 | 900*1500*1450 | 432 |
| SLH-460L/300 | 460 | 300 | 14.5 | 3 | 0.75 | 2.2 | 9 | 38 | 1100*1650*1550 | 547 |
| SLH-600L/400 | 600 | 400 | 18 | 4 | 0.75 | 1.5 | 9 | 38 | 1100*1650*1550 | 647 |
| SLH-800L/500 | 800 | 500 | 24 | 5.5 | 1.1 | 1.5 | 12 | 51 | 1750*1900*1900 | 750 |
| SLH-1000L/700 | 1000 | 700 | 30 | 7.5 | 1.5 | 2.2 | 14.5 | 51 | 1750*1900*1900 | 860 |
| SLH-1200L/700 | 1200 | 700 | 30 | 7.5 | 1.5 | 2.2 | 15 | 51 | 1800*2200*2100 | 975 |
| SLH-1300L/1000H | 1300 | 1000 | 36 | 4*2 | 2.2 | 3 | 18 | 51 | 2100*200*2100 | 1020 |
| SLH-1600L/1000H | 1600 | 1000 | 42 | 4.2 | 2.2 | 3 | 18 | 51 | 2100*2200*2300 | 1140 |
| SLH-2000L/1500H | 2000 | 1500 | 42 | 5.5*2 | 2.2 | 5.5 | 21 | 51 | 2300*2400*2300 | 1260 |
| SLH-2600L/1500H | 2600 | 1500 | 60 | 5.5*2 | 2.2 | 5.5 | 21 | 51 | 2300*2400*2400 | 1400 |
| SLH-3300L/2000H | 3300 | 2000 | 60 | 7.5*2 | | 7.5 | 27 | 51 | 2500*2600*2500 | 1530 |
| SLH-4000L/2000H | 4000 | 2000 | 80 | 7.5*2 | | 7.5 | 27 | 51 | 2500*2600*2700 | 1680 |

Cabinet Dryer

| MODEL | SD-6 | SD-12 | SD-24 | SD-30 | SD-48 |
|-------------------|-----------------|-------|-------|-------|-------|
| Heat Power (KW) | 3 | 4-5 | 6 | 7-5 | 9 |
| Blower Power (HP) | 0.5 | 0.5 | 1 | 1 | 2 |
| Temp. Range °C | 200 | | | | |
| Capacity (Kg) | 96 | 160 | 240 | 300 | 360 |
| Tray size (cm) | 400 X 800 X 400 | | | | |

Auto-Loader

| Model | | Motor (kw) | Conveying Capacity (kg/hr) | Conveying Height(m) | Material Hopper Volume(L) | Conveying Tube Calibre (mm) | External Dimensions (cm) | Weight (kg) | |
|-----------------------|------------|----------------------------|----------------------------|---------------------------|----------------------------|-----------------------------|--------------------------|-------------|-----------------|
| SAL-300C-Single Phase | | 1 | 250 | 4.5 | 6 | 38 | 360*260*500 | 10 | |
| SAL-400-3 Phase | | 0.75 | 350 | 4.5 | 12 | 38 | 400*300*500 | 25 | |
| Model | Motor (kw) | Conveying Capacity (kg/hr) | Conveying Height (m) | Material Hopper Volume(L) | Conveying Tube Calibre(mm) | External Dimensions | | (kg) Weight | |
| | | | | | | Controller (L*W*H) | Material Hopper (L*W*H) | Controller | Material Hopper |
| SAL-800G1 | 1.1 | 350 | 4.5 | 6 | 38 | 450*380*600 | 360*260*430 | 45 | 6 |
| SAL-800G2 | 1.5 | 400 | 5 | 6 | 38 | 450*380*600 | 400*260*430 | 50 | 10 |
| SAL-3HP | 2.2 | 550 | 7 | 6 | 38 | 450*380*800 | 400*260*750 | 60 | 12 |
| SAL-5HP | 3.7 | 700 | 8 | 12 | 51 | 450*380*800 | 400*350*750 | 75 | 20 |
| SAL-2HP-F | 1.5 | 250X2 | 5 | 6LX2 | 38 | 450*380*600 | 400*260*430 | 55 | 8*2 |
| SAL-3HP-F | 2.2 | 400X2 | 7 | 6LX2 | 38 | 450*380*800 | 400*260*750 | 65 | 12*2 |

Mould Temperature Controller: Eco-Series MTC

| Model | Max Temp °C | Heat (kw) | Pump (kw) | Flux L/min | Heating Medium | Cooling Mode | Mold Tie (Inch) | External Dimensions (L*W*H) | Weight (kg) |
|-----------|-------------|-----------|-----------|------------|----------------|--------------|-----------------|-----------------------------|-------------|
| STC-6W | 95 | 6 | 0.75 | 60 | Water | Direct | 3/8*2*2 | 780*260*650 | 65 |
| STC-12W | 95 | 12 | 1.5 | 100 | Water | | 3/8*6*2 | 780*260*650 | 70 |
| STC-18W | 95 | 9*2 | 1.5 | 200 | Water | | 3/8*6*2 | 900*400*810 | 100 |
| STC-6 | 160 | 6 | 0.37 | 45 | Oil | Indirect | 3/8*2*2 | 780*260*650 | 70 |
| STC-9 | 160 | 6 | 0.75 | 60 | Oil | | 3/8*4*2 | 780*260*650 | 73 |
| STC-12 | 160 | 12 | 1.5 | 100 | Oil | | 3/8*6*2 | 780*260*650 | 75 |
| STC-18 | 160 | 9*2 | 1.5 | 200 | Oil | | 3/8*6*2 | 900*400*810 | 110 |
| STC-9 (H) | 200 | 9 | 0.75 | 60 | Oil | | 3/8*2*2 | 780*260*650 | 70 |

| SLOW SPEED GRANULATOR | | | | | | | | |
|-----------------------|----------------------|-----------------------|----------------------------|------------------|-----------|--------|-----------------------------|-------------|
| Model | Chamber Calibre (mm) | Crush Capacity (Kg/H) | Rotating /Fixed Blade(Pcs) | Rotational Speed | Motor(Kw) | Blower | External Dimensions (L*W*H) | Weight (kg) |
| SG-2416 | 240*160 | 15-30 | ROTAR TYPE | 28 | 1.5 | 0.55 | 1020*400*1400 | 110 |
| SG-2425 | 240*250 | 30-50 | ROTAR TYPE | 28 | 1.5 | 0.55 | 1020*400*1400 | 120 |
| SG-2838 | 280*380 | 50-80 | / | 28 | 2.2 | 0.55 | 1020*500*1400 | 180 |
| SG-4140 | 410*400 | 80-100 | / | 28 | 3 | 0.55 | 1400*550*1500 | 250 |

| MEDIUM SPEED GRANULATOR | | | | | | | | |
|-------------------------|----------------------|-----------------------|----------------------------|------------------|------------|-----------------------------|--|-------------|
| Model | Chamber Calibre (mm) | Crush Capacity (Kg/H) | Rotating /Fixed Blade(Pcs) | Rotational Speed | Motor (Kw) | External Dimensions (L*W*H) | | Weight (kg) |
| SG-180FET | 190*220 | 30-50 | 9/2 | 358 | 1.5 | 1020*400*1115 | | 120 |
| SG-240FET | 250*220 | 50-80 | 12/2 | 358 | 1.5 | 1020*400*1115 | | 160 |
| SG-300FET | 310*270 | 50-100 | 15/2 | 358 | 2.2 | 1100*500*1200 | | 200 |
| SG-420FET | 430*270 | 80-150 | 22/2 | 358 | 2.2 | 1250*850*1400 | | 380 |

| HIGH SPEED GRANULATOR | | | | | | | |
|-----------------------|----------------------|-----------------------|-----|-------------------|------------|------------------------------|-------------|
| Model | Chamber Caliber (mm) | Crush Capacity (Kg/h) | | Fixed Blade (Pcs) | Motor (Kw) | Extern al Dimensions (L*W*H) | Weight (kg) |
| SG-230F | 200*230 | 100-150 | 3*2 | 2*1 | 4 | 920*610*1050 | 250 |
| SG-300F | 200*300 | 150-200 | 3*3 | 2*1 | 5.5 | 950*470*1190 | 400 |
| SG-400F | 235*400 | 200-250 | 3*4 | 2*1 | 7.5 | 980*840*1300 | 500 |
| SG-500F | 290*500 | 300-350 | 3*5 | 2*2 | 11 | 1100*1020*1530 | 950 |
| SG-600F | 320*600 | 350-450 | 3*6 | 2*2 | 15 | 1200*1110*1690 | 1300 |
| SG-800F | 540*810 | 450-600 | 3*4 | 2*2 | 22 | 2200*1500*2300 | 2100 |
| SG-1000F | 660*1000 | 600-1000 | 3*5 | 2*3 | 30 | 2300*1750*2650 | 2500 |
| SG-1200F | 800*1200 | 800-1200 | 3*6 | 2*3 | 45 | 2700*2100*3100 | 3500 |

| Batch Mixer | | | | |
|-------------|-----------|---------------------|------------------|------------|
| MODEL | Power(Kw) | Mixing capacity(Kg) | External Size(W) | Weight(Kg) |
| SSB-50 | 1.5 | 50 | 830*830*1120 | 130 |
| SSB-100 | 3 | 100 | 1000*1000*1280 | 190 |
| SSB-150 | 4 | 150 | 1130*1130*1380 | 250 |
| SSM-100 | 0.55 | 100 | 950*950*1380 | 190 |
| SSM-500 | 2.2 | 500 | 1450*1100*2500 | 500 |
| SST-50 | 1.5 | 50 | 830*830*1120 | 130 |

| Dosing Unit: Volumetric | | | |
|-------------------------|----------------|------------|---------------|
| Type | Colour-1 | | Colour-2 |
| Power supply | 230V/50 -60Hz | | 230V/50 -60Hz |
| Power (KW) | 0,1 | | 0,15 |
| Max.electrical input(A) | 0.4 | | 0.6 |
| Software | Standard/Basic | | XT |
| Weight(kg) | 8[12]/14[18] | | 16[20]/20[24] |
| Hopper Capacity(lt) | 3/8/15 | | 15/30 |
| Dosing screw | | B(solo XT) | 24mm |
| Minproduction(Kg/h) | 0.025 | 0.045 | 6 |
| Maxproduction(Kg/h) | 7 | 15 | 140 |

| SPRUE PICKERS | | | | | |
|------------------------|----------------------|------------|--------------------|---------|---------|
| Model | Unit | SS-550 (V) | SS-650 (V) | SS-550D | SS-650D |
| (Type) | (Single Arm Label) | | (Double Arm lable) | | |
| (I.M.M.range) | Ton | 50~120 | 100~180 | 50~120 | 100~180 |
| (Vertical Stroke) | MM | 550 | 650 | 550 | 650 |
| Crosswise Stroke) | MM | 120 | 120 | 120 | 120 |
| Swing angle | Degree | 45~90 | 45~90 | 45~90 | 45~90 |
| Gripper rotation angle | Degree | 90 | 90 | 90 | 90 |
| Max,Loding | Kg | 2 | 2 | 2 | 2 |
| Dry Take Out Time) | Sec | 0 7 | 0 8 | 0 7 | 0 8 |
| (Dry Cycle Time) | Sec | 3 . 2 | 3 . 4 | 4 . 4 | 4 . 6 |
| (Drive System) | (Pneumatic Cylinder) | | | | |
| (Working Pressure) | 5(±0.5)kgf/cm² | | | | |
| Air Consumption) | NI/cycle | 1.0 | 1.2 | 1.4 | 1.6 |
| Power Source) | Ac | AC50/60HZ | | | |
| Power (Capacity) | Kva | 0.2 | 0.2 | 0.2 | 0.2 |
| Net Weight | Kg | 40 | 42 | 50 | 52 |

| Mould Temperature Controller: Ultra Series | | | | | | | | | | | | | | |
|--|----------------|---|-----------|---------------------|-----------------|-----------------|---|--------------|----------------|-----------------------------|-------------|--------|--------|--------|
| Model | Max Temp °C | Heat (kw) | Pump (kw) | Heat Transfer Fluid | | Flux L/min | Heating Medium | Cooling Mode | Pressure (Bar) | External Dimenslons (L*W*H) | Weight (kg) | | | |
| | | | | Filling quantity | Expansion Valve | | | | | | | | | |
| ATC-160 | 160 | 6 | 0.5 | 12l | 4 | 60 | Oil/Water | Indirect | 3.8 | 570x250x600 | 60 | | | |
| ATC-160L | 160 | 12 | 1.1 | 16l | 6 | 70 | Oil/Water | Indirect | 5.4 | 610x390x630 | 85 | | | |
| ATC-95 | 95 | 6 | .75 | - | - | 60 | Water | Direct | 3.8 | 610x390x630 | 80 | | | |
| AIR COOLEDCHILLER : | | | | | | | | | | | | | | |
| Model | | SL-3A | SL-5A | SL-10A | SL-15A | SL-20A | SL-30A | SL-40A | SL-50A | SL-60A | | | | |
| Refrigeration capacity | Kw | 10 | 15 | 30 | 45 | 60 | 90 | 120 | 150 | 180 | | | | |
| | Kcal/h | 7740 | 12900 | 25800 | 38700 | 51600 | 77400 | 103200 | 129000 | 154800 | | | | |
| Compressor Inputpower | Kw | 2.2 | 3.7 | 7.5 | 11 | 15 | 22.5 | 30 | 37.5 | 45 | | | | |
| | HP | 3 | 5 | 10 | 15 | 20 | 30 | 40 | 50 | 60 | | | | |
| /Type Refrigerant Filling quantity | | R22/ A-407 | | | | | | | | | | | | |
| | Kg | 1.5 | 2.5 | 5 | 7.5 | 10 | 12 | 18 | 30 | 35 | | | | |
| Water tank capacity | L | 60 | 90 | 180 | 270 | 360 | -- | -- | -- | -- | | | | |
| Evaporator type | | Shell and tube | | | | | | | | | | | | |
| Freezing water pipe | Inch | 1 | 1 | 1.5 | 2 | 2 | 3 | 3 | 4 | 4 | | | | |
| Freezing water flow rate | L/min | 60 | 90 | 180 | 270 | 270 | 270 | 380 | 460 | 550 | | | | |
| | M³/h | 3.6 | 5.4 | 11 | 16 | 16 | 16 | 23 | 28 | 33 | | | | |
| Type | | Axial flow type blower fan | | | | | | | | | | | | |
| Fan motor /Power | Kw | 0.45 | 0.45 | 0.45x2 | 0.65x2 | 0.65x2 | 0.65x4 | 0.65x4 | 1.1x2 | 1.8x4 | | | | |
| Safeguard | | Protection of high & low pressure, Compressor overload, pump overload | | | | | Protection of high & low pressure, compressor overload, pump overload,antifreezing,flow rate | | | | | | | |
| Power | | AC3+N+PE50/60Hz | | | | | | | | | | | | |
| Dimensions(mm) | L | 750 | 1100 | 1450 | 2200 | 2200 | 2200 | 2500 | 2200 | 3000 | | | | |
| | W | 680 | 680 | 790 | 1000 | 1320 | 1320 | 1200 | 2000 | 2200 | | | | |
| | H | 900 | 1100 | 1120 | 2100 | 2100 | 2180 | 2290 | 2180 | 2180 | | | | |
| Weight | Kg | 100 | 160 | 300 | 700 | 750 | 1400 | 1600 | 2200 | 2400 | | | | |
| WATER COOLED CHILLER | | | | | | | | | | | | | | |
| Model | | 5W | 10W | 15W | 20W | 30W | 40W | 50W | 60WL | 70WL | 80WL | 90WL | 100WL | 120WL |
| Refrigeration capacity | Kw | 15 | 30 | 45 | 60 | 90 | 120 | 150 | 180 | 210 | 240 | 270 | 300 | 360 |
| | Kcal/h | 12900 | 25800 | 38700 | 51600 | 77400 | 103200 | 129000 | 154800 | 180600 | 206400 | 232200 | 258000 | 309600 |
| Compressor Inputpower | Kw | 3.7 | 7.5 | 11 | 15 | 22.5 | 30 | 37.5 | 45 | 52.5 | 60 | 67.5 | 75 | 90 |
| | HP | 5 | 10 | 15 | 20 | 30 | 40 | 50 | 60 | 70 | 80 | 90 | 100 | 120 |
| Type Refrigerant Filling quantity | | R22/ A-407 | | | | | | | | | | | | |
| | Kg | 2.5 | 5 | 7.5 | 10 | 15 | 20 | 25 | 30 | 35 | 40 | 45 | 50 | 60 |
| Water tank capacity | L | 90 | 180 | 270 | 360 | 360 | -- | -- | -- | -- | -- | -- | -- | V |
| Evaporator type | | Shell and Tube | | | | | | | | | | | | |
| Freezing water pipe | Inch | 0.5 | 1.5 | 2.0 | 2.5 | 3 | 3 | 4 | 4 | 4 | 4 | 4 | 4 | 4 |
| Freezing water flow rate | L/min | 90 | 180 | 270 | 270 | 270 | 380 | 460 | 550 | 630 | 730 | 920 | 1030 | 1200 |
| | M³/h | 5.4 | 11 | 16 | 16 | 16 | 23 | 28 | 33 | 38 | 44 | 55 | 62 | 72 |
| Condenser Type | | Shell type | | | | | | | | | | | | |
| Cooling ater pipe | Inch | 1 | 1.5 | 2 | 2.5 | 3 | 3 | 4 | 4 | 4 | 4 | 4 | 4 | 4 |
| Cooling water flow rate | L/min | 110 | 210 | 350 | 350 | 350 | 480 | 610 | 710 | 830 | 950 | 1160 | 1330 | 1500 |
| | M³/h | 7 | 13 | 21 | 21 | 21 | 29 | 37 | 43 | 50 | 57 | 70 | 80 | 90 |
| Safeguard | | Protection of high & low pressure, Compressor overload, pump overload | | | | | Protection of high & low pressure, compressor overload, pump overload, anti-freezing, flow rate | | | | | | | |
| Power | | AC3+N+PE50/60Hz | | | | | | | | | | | | |
| Dimensions (mm) | L | 840 | 1550 | 1660 | 1800 | 1950 | 2180 | 2190 | 2260 | 2870 | 2870 | 3000 | 3020 | 3020 |
| | W | 670 | 710 | 820 | 950 | 1000 | 1200 | 1200 | 1200 | 1200 | 1300 | 1300 | 1300 | 1300 |
| | H | 980 | 1150 | 1400 | 1700 | 1330 | 1420 | 1450 | 1590 | 1660 | 1660 | 1890 | 1910 | 1910 |
| Weight | Kg | 160 | 300 | 460 | 600 | 900 | 1120 | 1190 | 1430 | 1560 | 1590 | 2110 | 2230 | 2350 |
| Cooling Towers | | | | | | | | | | | | | | |
| Model No | Capacity (TON) | Pump Motor (KW) | | Model No | Capacity (TON) | Pump Motor (KW) | | | | | | | | |
| APM-10 | 10 | 0.5 | | APM-80 | 80 | 3 | | | | | | | | |
| APM-15 | 15 | 0.5 | | APM-100 | 100 | 3 | | | | | | | | |
| APM-20 | 20 | 1 | | APM-125 | 125 | 5 | | | | | | | | |
| APM-25 | 25 | 1.5 | | APM-150 | 150 | 5 | | | | | | | | |
| APM-30 | 30 | 2 | | APM-175 | 175 | 7.5 | | | | | | | | |
| APM-40 | 40 | 2 | | APM-200 | 200 | 7.5 | | | | | | | | |
| APM-50 | 50 | 2 | | APM-250 | 250 | 10 | | | | | | | | |
| APM-60 | 60 | 2 | | APM-300 | 300 | 10 | | | | | | | | |