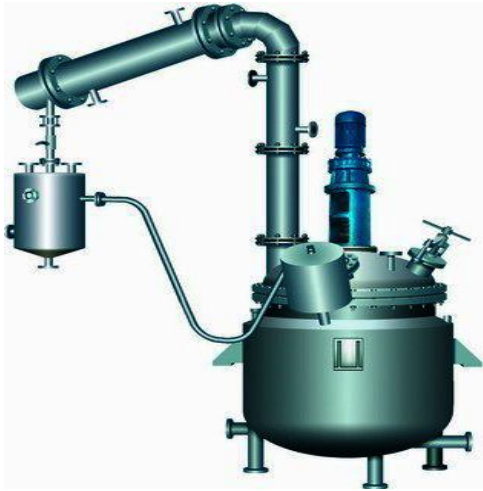


Resin Plants



- We undertake turnkey projects for resin plants and other resin machinery and complete them with utmost efficiency. We design and supply resin machinery for solvent based resin plants, acrylic based resin plants and multipurpose resin plants. Our products ensure uninterrupted and flawless services for years.
- We provide complete solutions by offering latest technological Resin plants. Our range is fabricated using the latest design and manufacturing technology available. These plants are available in full range of diameters and lengths. To satisfy the customer's needs, our objective is, to present new techniques to our clients according to their specifications and applications.
- We manufacture and provide Resin Plants with different specifications and grades. These plants are used in adhesive and paint manufacturing units. We ensure to make plants which imports hassle free production for long hours. These Resin plants cover the whole range of application from construction and building industry to aerospace technology
- We offer Synthetic Resin Plants that are anti corrosive and provides accurate results. These plants are available in different capacities and specifications. Our Synthetic Resin Plants are made of superior quality raw material like stainless steel SS316 / SS304 etc. These plants are technically advanced, robust in construction, easy to operate, low maintenance, highly efficient and are offered at industry leading prices
- Standard Capacity of Resin Plants available are from 1ton .2ton ,4tons , 6tons , 10tons