

RELIABLE ENGINEERING SOLUTIONS



Dear Dealer,

KEN Engineers, Founded in the year 2000 at Ahmedabad, Gujarat, India. We are the fastest growing and well reputed company.

KEN represents smart, sturdy and sustainable pumping solutions with over 20 years of unmatched experience and expertise for applications in industries across the spectrum.

We are pleased to put this comprehensive leaflet of pumps in your hand. In this book we have given you details of the products in which we deal regularly. Most of the products are manufactured by us, some by our associates.

Our main aim is to provide you quality product at right time and at right price.

Our team is always at your service.

We hope to establish long Lasting & healthy relationship with you.

Yours faithfully,

Partha Trivedi

CONTACT DETAILS :

ken.enggad1@gmail.com | pst@kenengineers.com

+91 9824018490 | +91 89058 06763

Office Address

309, Nandanvan Complex, Opp. R. T. O., Nr. Subhash Bridge Circle,
Ahmedabad - 380027

Factory Address

C-36, Bileshwar Estate, Opp. GVMM, Odhav Ring Road,
Ahmedabad-382415

INDEX

SR NO	DESCRIPTION	PAGE NO.	SR NO	DESCRIPTION	PAGE NO.
1	"KCF" Series Centrifugal Pumps	1 - 2	18	Lobe Pumps	29
2	"KCFS" Series SS Centrifugal Pumps	3 - 4	19	Sewage & De-watering Submersible Pumps, Polder Pumps & Agitator Pumps	30
3	"KMP" Series Self-Priming Cum Centrifugal Pumps	5 - 6	20	Vertical Sump Pumps	31
4	"NSP" & "KSEJ" Series Self-Priming Centrifugal Mud Pumps	7 - 8	21	"KPM D" Series Sealless Magnetic Drive Chemical Process Pumps In PP and PVDF Construction	32
5	"KCMP" Series Centrifugal Monoblock Pumps	9 - 10	22	"KVGP" Series Vertical Glandless Pumps	33
6	"KEG" & "KIG" Series Gear Pumps	11 - 14	23	Flexible Shaft Driven Pumps, "PPH" Series Horizontal Centrifugal Multistage Monoblock Pumps & Pressure Systems	34
7	"KSP" Series Self-Priming Pumps	15	24	Vertical Turbine Pumps / Line Shaft Pumps & Floating Pumps	35
8	"KPP" & "KHPP" Series Polypropylene Pumps	16 - 18	25	Different Types of Barrel Pumps & Hand Pumps (Industrial & Domestic)	37 - 40
9	"KHO" Series Horizontal Openwell Submersible Pumps	19 - 20	26	Solar Pumps & DC Pumps	41 - 42
10	Different Types Of Back Pullout Pumps	21	27	"KSCF" SS Centrifugal Pumps (Casting)	43
11	Thermic Fluid Pumps , Horizontal Split Casing Pumps & Inline Centrifugal Pumps	22	28	Electromagnetic Meter, Gas turbine Meter & Mass Flow Meter	44 - 45
12	Rubber Lined Pumps, Ceramic Coated Pumps & PTFE Lined Pumps	23	29	Vertical Borewell Submersible Pumps, Agricultural Centrifugal Pumps & Domestic Self-Priming Pumps	46
13	Flame Proof Pump, Horizontal High Pressure Multistage Centrifugal Pumps & Fire Fighting Pumps	24	30	Special Custom Built Pumps & Accessories	47
14	High Pressure Plunger Pumps, Dosing-Metering Pumps & Dosing Systems	25			
15	Hydraulic Test Pumps	26			
16	Piston Pumps & Pulsation Dampener	27			
17	Screw Pumps	28			

"KCF" SERIES

APPLICATION

- Milk, Cream, Butter Milk, Condensed Milk
- Fruit juice, Beer, Wine, Sugar Syrup
- Vitamin Solutions, Sugar & Confectionery.
- RO Water, DM Water, Pure Water. Water for Injection (WFI)
- Vegetable Oil, Mineral Oil, Lub Oil etc.
- Pharmaceutical Formulations, Syrup etc.
- Alkaline Solution / Alcoholic Drinks.
- Acids, Fine Chemicals
- Bottling Plants, Soft Drinks & Distillery
- Food Processing / Liquid Food Stuffs
- Colour dyes and Pigments / Paints
- Descaling Applications, Paper & Cement Industries
- Water Treatment Plants
- Detergent, Soaps, Paste & Shampoo
- Textile Sizing, Dyeing & Finishing Systems
- Natural Cellulose Fiber / Synthetic Fiber System
- Hot & Cold Water Pumping.

CENTRIFUGAL PUMP



FEATURES

- As all pumps are made from rolled stainless steel, mechanical properties are far superior than cast material.
- Pore free, non-pitting and non-adhering smoother surface, so lesser friction losses, and lesser service corrosion.
- Super finished surface also ensures no ingress or emission of germs or impurities during pumping or idling which is a basic requirement of sterile / hygienic application.
- Pump can handle liquids having viscosities up to 1500 centipoises.
- Pumps are highly energy efficient and requires lesser NPSH to function without cavitation.
- The pumps can work under a vacuum of 720 mm of Hg, suitable for vacuum evaporators.
- Pumps are available with cased/semi open impellers.
- The best elastomers are used in the pumps to provide optimum resistance for high temperatures and chemicals.
- Minimum working / rotating parts.
- Safe and quiet operation levels.
- Gentle product handling with lower maintenance and downtime cost.
- Dynamic combinations of seal faces as per customer's requirement (single seal / double seal, seal external cooling).
- Suitable for standard motor or flange type or foot cum flange type motor or engine
- Monoblock or bare pumps or with trolley.
- Also with flame proof motors.
- Various types of connection like - tri'clove joints SMS, flanges or threaded nipple/coupling.
- Pumps with adjustable legs, available on request.
- Special bearing for hot water application available on request.

RANGE

- Size : 12 MM TO 100 MM
- Head : 03 Meters to 76 Meters
- Capacity : Up to 1890 Lpm

MATERIAL OF CONSTRUCTION

- SS 304/ SS 316/ SS 304 L / SS 316 L
- Seal silicon carbide Or as per customer's requirement.



"KCF" SERIES

WATER RATING CHART

MODEL	HP	SIZE	(HEAD IN METERS) DISCHARGE IN LPM AT 2900 RPM													
			4	6	8	10	12	14	16	18	20	22	24	26	28	30
KCF-1	0.25	12 X 12	25	26	17	14	-	-	-	-	-	-	-	-	-	-
KCF-2	0.5	25 X 25	-	-	112	108	80	70	-	-	-	-	-	-	-	-
KCF-2A	0.5	40 X 40	-	-	210	175	60	-	-	-	-	-	-	-	-	-
KCF-3	1	25 X 25	-	-	-	-	140	130	122	100	95	80	70	30	-	-
KCF-3A	1	40 X 40	-	-	270	250	230	200	100	-	-	-	-	-	-	-
KCF-3B	1	50 X 50	-	-	370	350	300	200	-	-	-	-	-	-	-	-
KCF-4A	1.5	40 X 40	-	-	-	-	-	-	-	-	160	150	130	90 at 25 mtr		-
KCF-4B	1.5	50 X 40	-	-	-	-	280	250	220	180	150	80	-	-	-	-
KCF-5A	2	50 X 40	-	-	-	-	-	-	-	-	230	200	186	130	-	-
KCF-5B	2	50 X 50	-	-	-	-	325	290	245	180	120	-	-	-	-	-
KCF-5C	2	80 X 80	-	-	550	500	470	350	-	-	-	-	-	-	-	-
MODEL	HP	SIZE	(HEAD IN METERS) DISCHARGE IN LPM AT 2900 RPM													
			6	8	12	16	20	24	28	32	36	40	45	48	54	56
KCF-6A	3	50 X 40	-	-	-	-	230	200	180	150	75	-	-	-	-	-
KCF-6B	3	65 X 50	-	-	575	520	265	225	-	-	-	-	-	-	-	-
KCF-7A	5	50 X 40	-	-	-	-	-	-	-	260	230	190	145	90	-	-
KCF-7B	5	65 X 50	-	-	-	650	580	520	300	210	150	-	-	-	-	-
KCF-7C	5	80 X 80	-	-	1050	900	756	-	-	-	-	-	-	-	-	-
KCF-7D	5	100X100	1296	1120	1080	648	-	-	-	-	-	-	-	-	-	-
KCF-7E	5	80 X 65	-	-	-	750	650	556	345	-	-	-	-	-	-	-
KCF-8A	7.5	50 X 40	-	-	-	-	-	-	-	290	280	250	225	190	120	60
KCF-8B	7.5	65 X 50	-	-	-	-	-	700	640	575	470	270	-	-	-	-
KCF-8C	7.5	100X80	-	-	1250	1150	950	800	-	-	-	-	-	-	-	-
MODEL	HP	SIZE	(HEAD IN METERS) DISCHARGE IN LPM													
			10	12	16	20	24	28	32	36	40	45	48	54	57	60
KCF-8D	7.5	100X100	-	1458	1296	1080	750	-	-	-	-	-	-	-	-	-
KCF-8E	7.5	80 X 65	-	-	1025	918	810	700	-	-	-	-	-	-	-	-
KCF-9A	10	50 X 40	-	-	-	-	500	480	470	450	430	390	340	260	-	-
KCF-9B	10	65 X 50	-	-	-	-	-	-	700	650	590	490	390	-	-	-
KCF-9C	10	80 X 65	1270	1242	1180	1080	1026	918	810	700	486	-	-	-	-	-
KCF-9D	10	100X100	-	1700	1560	1450	1566	1240	972	-	-	-	-	-	-	-
KCF-10A	12.5	80 X 65	-	-	-	1026	972	950	918	810	756	540	-	-	-	-
KCF-10B	12.5	100X100	-	-	1780	1725	1566	1242	648	-	-	-	-	-	-	-
KCF-11A	15	65 X 50	-	52		56		60		64	68	72		76	Head in Mtr.	
			-	432		378		365		350	330	270		216	Discharge in lpm	
MODEL	HP	SIZE	(HEAD IN METERS) DISCHARGE IN LPM													
			20	24	28	32	36	40	44	48	52	54	-	-	-	-
KCF-11B	15	80 X 65	-	-	-	1026	972	918	864	756	648	540	-	-	-	-
KCF-11C	15	100X100	1890	1782	1620	1350	910	-	-	-	-	-	-	-	-	-
KCF-12A	20	100X80	1782	1700	1620	1510	1458	1350	1188	1026	-	-	-	-	-	-

"KCFS" SERIES

APPLICATION

- Milk, Cream, Butter Milk, Condensed Milk
- Fruit Juice, Beer, Wine, Sugar Syrup
- Vitamin Solutions, Sugar & Confectionery
- RO Water, DM Water, Pure Water, Water for Injection (WFI)
- Vegetable Oil, Mineral Oil, Lub Oil etc.
- Pharmaceutical Formulations, Syrup etc.
- Alkaline Solution / Alcoholic Drinks.
- Acids, Fine Chemicals
- Bottling Plants, Soft Drinks & Distillery
- Food Processing / Liquid Food Stuffs
- Colour dyes and Pigments / Paints
- Descaling Applications, Paper & Cement Industries
- Water Treatment Plants
- Detergent, Soaps, Paste & Shampoo
- Textile Sizing, Dyeing & Finishing Systems
- Natural Cellulose Fiber / Synthetic Fiber System
- Hot & Cold Water Pumping

STAINLESS STEEL CENTRIFUGAL PUMP



FEATURES

- As all pumps are made from rolled stainless steel, mechanical properties are far superior than cast material.
- Pore free, non-pitting and non-adhering smoother surface, so lesser friction losses, and lesser service corrosion.
- Super finish surface also ensure no ingress or emission of germs or impurities during pumping or idling which is a basic requirement of sterile hygienic application.
- Designed for CIP (clean in place) or manual cleaning.
- Pumps are highly energy efficient and requires lesser NPSH to function without cavitations.
- Pump can handle liquids having viscosities up to 1500 centipoises.
- The pumps can work under a vacuum of 720 mm of Hg, suitable for vacuum evaporators.
- Pumps are available with open/semi open impellers.
- The best elastomers are used in the pumps to provide optimum resistance for high temperatures and chemicals.
- Minimum working / rotating parts.
- Safe and quiet operation levels.
- Gentle product handling with lower maintenance and downtime cost.
- Dynamic combinations of seal faces as per customer's requirement. (single seal / double seal, seal external cooling)
- Suitable for standard motor or flange type or foot cum flange type motor or engine.
- Monoblock or bare pumps or with trolley.
- Also with flame proof motors.
- Various types of connection like – tri'clove joints SMS, flanges or threaded nipple/coupling.
- Pumps with adjustable legs, available on request..

RANGE

- Motor HP : 0.25 HP TO 30 HP
- Head : 04 Meters to 80 Meters
- Capacity : 04 Lpm TO 2000 Lpm

MATERIAL OF CONSTRUCTION

- Casing : AISI 316 / 316L / 304L / 304
- Impeller : AISI 316 / 316L / 304L / 304
- Wear Plate : AISI 316 / 316L / 304L / 304
- Shaft : AISI 316 / 316L / 304L / 304
- Seal : TC/TC, SIC/SIC, SS/Carbon or even seal in special application
- Motor Cover : SS-304 / SS-202 / SS-316
- Gasket : Viton / Nitrile / Silicon / PTFE



SHEAR PUMP

"KCFS" SERIES

WATER RATING CHART

Model	HP	Size	(Head in Metres) Discharge in LPM at 2900 RPM													
			3	5	7	10	12	15	17	20	22	25	27	30	35	40
KCFS-1	0.25	12 X 12	40	32	-	-	-	-	-	-	-	-	-	-	-	-
KCFS-2	0.5	25 x 25	-	100	45	-	-	-	-	-	-	-	-	-	-	-
KCFS-3	1	25 X 25	-	-	140	120	70	35	-	-	-	-	-	-	-	-
KCFS-3A	1	38 X 38	-	-	181	95	50	-	-	-	-	-	-	-	-	-
KCFS-4A	1.5	35 X 38	-	-	-	-	-	160	130	90	75	-	-	-	-	-
KCFS-4B	1.5	50 X 50	-	-	-	-	250	166	85	-	-	-	-	-	-	-
KCFS-5A	2	38 X 38	-	-	-	-	225	190	155	105	78	40	-	-	-	-
KCFS-5B	2	50 X 50	-	-	330	250	160	80	-	-	-	-	-	-	-	-
KCFS-6A	3	50 X 38	-	-	-	-	-	-	250	220	180	135	108	50	-	-
KCFS-6B	3	50 X 50	-	-	-	-	-	330	300	280	225	150	85	-	-	-

MODEL	HP	SIZE	(Head in Metres) Discharge in LPM at 2900 RPM								
			16	20	24	28	32	36	40	44	48
KCFS-7A	5	50 X 38	-	-	260	230	190	145	90	-	-
KCFS-7B	5	65 X 50	400	370	300	230	180	-	-	-	-
KCFS-8A	7.5	50 X 38	-	-	290	280	250	225	190	120	60
KCFS-8B	7.5	65 X 50	500	450	385	280	230	-	-	-	-
KCFS-9A	10	50 X 38	-	500	480	470	450	410	350	290	190
KCFS-9B	10	65 X 50	560	510	450	370	280	210	150	-	-



"KMP" SERIES

APPLICATION

SELF PRIMING CUM CENTRIFUGAL MUD PUMPS

Public utilities :

- For pumping muddy water, sewage, polluted liquids, solid and in swimming pool.
- De-watering Basements, Trenches, Construction sites.
- Onboard shift, as bilge, for desk wash & engine cooling.
- Tiles & Marble factories, effluent plants.

Mobile Machinery :

- Cooling water for marine engines and shovels.
- Any application where priming is to be avoided.

Industry :

- Transfer of clean or dirty neutral, acid or alkali liquids containing sand, mud or solids in suspension; clean or dirty low viscosity petroleum product or solvents; milk of lime, caustic soda, washing, cooling, circulation; smoke scrubbing; emergency duty.

Civil engineering :

- Flood drainage; sewage pumping; fire fighting; recovery of dangerous liquids.

Naval duty :

- Loading and unloading; bilge pumping; washing, fire fighting, stripping, sanitary duty and circulation.

Waste treatment:

- pumping polluted, hot or corrosive waste water containing sand, mud or solids in suspension; dosing neutralizing liquids; pumping out settled sludge.

Construction industry :

- De-watering excavation, canals or ponds; ground water de-watering with well point system or drains; water supply from wells or canals; hosing down concrete castings.

Agriculture :

- Surface irrigation; liquid manure oxygenation; transfer and spraying liquid manure or fertilizers, distribution of liquid animal feed; transfer of must; washing.



TYPICAL APPLICATION

- Liquid containing sand mud or solids in suspension with PH from 5-13, smoke scrubbing, water emulsion for machine tools or grinders, cutting or quenching fluid circulation, cooling water circulation in steel mills or drawing mills, neutralizing liquid dosage, pumping out settled sludge, sump pumping liquid manure transfer and circulation.
- Water circulation in paint spray booths, stripping fuel tanks circulation Recovery of dirty solvents.
- Transfer of light petroleum product such as diesel fuel, paraffin, kerosene and petrol. (gasoline)
- Liquid fertilizer transfer, circulation and spraying, brackish or sea water containing sand.
- Brackish or sea water washing, cooling or fire fighting in ports, auxiliary duties on board.
- Marine duty, brine, sea intake and circulation of sea water in swimming pools.
- Pumping out acid waster, transfer, of dilute acids, fruit juice or fluid food products.
- Recovery of spills from chemical plant, transfer or circulation of caustic or potash.
- At Drilling Rigs.



"KMP" SERIES

FEATURES

- Excellent, quick, automatic without foot valve up to 8 mtrs.
- Automatic air release during priming.
- Back pull out design, so easy maintenance can be done without disturbing pipe lines.
- Dynamically balanced rotating parts ensure lesser vibrations.
- Better efficiency because of good hydraulic design.
- Minimum parts & fast repairing at low cost, pump is also available at economical rate.
- Available in Bare, Coupled, Monoblock, Belt driven & Engine driven version.
- Also offered pump with trolley / trailer to move it from one place to another.
- Monoblock pumps can withstand with wide voltage fluctuations.
- Less expensive & easily available spares.
- Pumps can be fitted with mechanical seal as per customer's requirements.
- Very simple construction with only two moving parts.
- Easy inspection of impeller.
- Large diameter solids handled. (up to 60 mm)
- High resistance. to abrasive liquids. Wear plates are easily replaced and impellers are also available with ceramic coating

Easy to install :

only the suction hose is immersed in the liquid. The pump can be set up high and dry in the most convenient position for inspection and maintenance.

Long Life :

The parts subject to wear can be easily replaced one or more times to restore the original performance.

WATER RATING CHART

MONOBLOCK & MOTOR COUPLED

MODEL	MOTOR KW/ HP	PIPE SIZE IN MM SUC. DEL.	SPEED IN R.P.M	TOTAL HEAD IN METERS																	SOLID HAND LING SIZE MM	
				6	8	10	12	14	15	16	18	19	20	22	24	25	26	28	30	32		34
				DISCHARGE LITERS PER SECOND																		
KMP-0	0.75/1.00	40 X 40	2850	4.5	4.0	3.5	2.6	1.4	0.5	-	-	-	-	-	-	-	-	-	-	-	7.0	
KMP-1	1.5/2.00	40 X 40	2850	-	-	6.2	5.5	4.8	4.3	3.9	2.7	1.8	0.8	-	-	-	-	-	-	-	8.5	
KMP-2	2.20/3.00	50 X 50	2900	-	-	9.2	8.4	8.0	7.7	7.2	6.4	5.9	5.3	4.0	2.5	1.4	-	-	-	-	10.5	
KMP-3A	3.70/5.00	80 X 80	2900	-	-	-	-	-	-	-	-	-	10.0	9.2	8.1	7.4	6.7	5.1	3.7	1.8	7.0	
KMP-3	5.50/7.50	80 X 80	2900	-	-	-	-	-	-	-	-	-	16.3	16.1	15.4	14.7	13.9	12.4	10.1	7.9	14.5	
KMP-3L	3.70/5.00	80 X 80	1450	-	-	18.0	16.3	13.5	11.5	10.0	5.5	-	-	-	-	-	-	-	-	-	15.5	
KMP-4LA	7.50/10.00	100X100	1450	-	-	35.9	33.8	31.1	29.9	28.4	23.8	22.4	17.9	11.9	-	-	-	-	-	-	18.5	
KMP-4L	9.30/12.5	100X100	1450	-	-	41.4	39.4	36.5	35.2	33.5	30.4	28.2	26.1	21.9	16.9	14.0	10.0	-	-	-	23.0	
KMP-6LA	15.0/20.0	150X150	1450	-	-	66.2	63.3	59.7	57.4	54.9	48.7	45.4	42.4	34.1	23.7	-	-	-	-	-	34.0	
KMP-6L	18.70/25.00	150X150	1450	-	-	74.9	72.4	68.6	66.1	63.9	58.4	54.9	51.9	44.9	33.9	27.4	20.0	-	-	-	40.0	

Performance Chart

Performance Chart																	
PUMP MODEL	MOTOR RATING		PIPE SIZE		IMPELLER DIA(MM)	TOTAL HEAD IN METERS										SOLID SIZE (MM)	RATED SPEED (RMP)
	KW	HP	SUC	DEL		22	24	28	32	36	40	44	46	47			
						CAPACITY IN PER SECOND											
KMP-3HH	7.5	10	80	80	194		19	18	16.5	12.5	8.5	4.5	2		14.5	2900	

- Performance are at 2900 / 1450 rpm , 50 / 60 Hz and tested with clear Water.
- Due to Constant R & D activity , details are subject to change without prior Notice.

MODEL	MOTOR KW/HP	PIPE SIZE IN MM SUC. DEL.	SPEED IN R.P.M	TOTAL HEAD IN METERS																			SOLID HAND- LING SIZE MM
				6	8	10	12	14	15	16	18	19	20	22	24	25	26	28	30	32	34	36	
				DISCHARGE LITERS PER SECOND																			
KMP-3L	4.0/6.0	80 X 80	1500	-	-	-	17.1	15.0	13.5	11.9	8.1	5.4	3.1	-	-	-	-	-	-	-	-	15.5	
KMP-3L	9.0/12.0	80 X 80	1800	-	-	-	-	-	22.0	21.5	20.1	19.3	18.4	16.1	13.2	11.5	9.5	5.4	-	-	-	-	16.5
KMP-4LA	9.0/12.0	100 X 100	1500	-	-	-	35.7	33.2	32.0	30.6	27.7	26.1	24.4	20.9	16.6	14.0	10.9	-	-	-	-	-	18.5
KMP-4L	10.5/14.0	100 X 100	1500	-	-	-	39.8	28.4	37.5	35.5	33.4	31.8	30.0	25.8	21.0	17.9	15.4	9.2	-	-	-	-	23.0
KMP-6LA	16.5/22.0	150 X 150	1500	-	-	67.5	65.6	62.5	61.5	58.6	53.0	51.1	47.4	40.4	32.2	27.8	22.0	-	-	-	-	-	34.0
KMP-6L	19.5/26.0	150 X 150	1500	-	-	76.8	73.8	71.4	70.2	67.5	62.2	61.4	56.3	50.1	41.4	37.7	31.4	-	-	-	-	-	40.0

"NSP" SERIES

APPLICATION

Public utilities :

- For pumping muddy water, sewage, polluted liquids, solid and in swimming pool.
- Dewatering Basements, Trenches, Construction sites.
- Onboard shift, as bilge, for desk wash & engine cooling.

Industrial :

- Petroleum product, Ceramic product Chemicals, Thermal plants etc.
- Tiles & Marble factories, effluent plants.

Marine Works :

- Handling liquids from docs, ports and vessels etc.

Salvage Operations :

- Fire fighting.

Mobile Machinery :

- Cooling water for marine engines & shovels.
- Any application where priming is to be avoided.

SELF PRIMING - CENTRIFUGAL



FEATURES

- Excellent quick automatic priming action without foot valve up to 8 mtrs.
- Automatic air release during priming.
- Back pull design, so easy to maintain without disturbing pipe lines.
- Dynamically balanced rotating parts ensures less vibrations.
- Better efficiency because of good hydraulic design.
- Non-clog impellers to handle solid particles up to 16 mm.
- Minimum parts, fast repairing at low cost, Also pump is available at an economical rate.
- Available in Bare, Coupled, Monoblock, Belt driven & Engine driven version.
- Also offered pump with trolley / trailer to move it from one place to another.
- Graded casting & perfect machining of all components ensure long life.
- ABLE TO OFFER PUMPS WITH CLOSED IMPELLERS FOR CLEAR LIQUIDS.
- Monoblock pumps can withstand wide voltage fluctuations.
- Less expensive & easily available spares.
- Pumps can be fitted with mechanical seal as per customer's requirement

MATERIAL OF CONSTRUCTION

- | | |
|-------------------------------|--|
| • Casing | : Cast Iron / SS-304 (CF-8), SS-316 (CF-8M) / Alloy-20 |
| • Impeller | : Cast Iron / CF-8 CF-8M / Bronze |
| • Diffuser | : Cast Iron / CF-8M / Bronze |
| • Shaft | : EN-8 / SS 304 / SS 316 |
| • Sleeve | : SS-410 / SS 304 / SS 316 / Bronze |
| • Bearing Housing : Cast Iron | |
| • Sealing | : Tiwa/Carbon - Ceramic seal TC-TC Seal |



"KNSP" SERIES

WATER RATING CHART

MODEL	HP RPM	PIPE SIZE	TOTAL HEAD IN METERS																	SOLD HANDLIN	
			6	8	10	12	14	15	16	18	19	20	22	24	25	26	28	30	32		34
			DISCHARGE (LITERS PER SECOND)																		
KNSP-0	1.0 X 2900	40 X 40	4	2.8	2	1.5	0.5	-	-	-	-	-	-	-	-	-	-	-	-	7.0	
KNSP-1	2 X 2900	40 X 40	-	5.7	5	4	3	2.6	2	0.5	0	-	-	-	-	-	-	-	-	8.5	
KNSP-2	3 X 2900	50 X 50	-	10	9.0	8.0	7.0	6.5	5.9	2	1	0.5	0.3	0	-	-	-	-	-	10.5	
KNSP-3L	5 X 1450	80 X 80	18.0	16.6	13.5	12	9	4	-	-	-	-	-	-	-	-	-	-	-	7.0	
KNSP-3A	5 X 2900	80 X 80	-	-	-	-	-	-	-	-	6.2	5.5	5.2	4.9	3.9	3.2	2.9	1	-	14.5	
KNSP-3	7.5 X 2900	80 X 80	-	-	-	-	-	-	14	13.5	13.1	13	12	11	10	9.4	7.7	6.9	6.1	5.5	14.5

Performances are at 2900 RPM, 50 Hz and tested with Clear Water.

Note : Special Pumps for Higher Capacity and Head available on request.

"KSEJ" SERIES MUD PUMP



FEATURES

- This self priming (economical) mud pump, available from 0.5 hp to 5 hp in monoblock and bare version, with seal and without seal.
- Pumps are in std cast iron construction only (we can offer ss impeller if required).
- Compact design.

PUMP MODEL	PIPE SIZE	R.P.M	SOLID HAND M.M	MOTOR RATING		HEAD IN METERS & DISCHARGE IN LITERS PER MINUTE							
				KW	H.P	06 M	9 M	11 M	13 M	15 M	17 M	19 M	25 M
KSEJ-05	40 X 40	2800	5	0.37	0.50	150	84	60					
KSEJ-0	40 X 40	2800	14	0.75	1.00		270	228	174	120	42		
KSEJ-1	50 X 50	2800	17	1.50	2.00		450	372	276	168	24		
KSEJ-2	50 X 50	2800	20	2.20	3.00		540	468	372	270	168	48	
KSEJ-3L	80 X 80	1440	15.5	3.70	5.00		1050	900	750	600	330	156	

"KCMP" SERIES

APPLICATION

CENTRIFUGAL PUMP

- Irrigation.
- Industries for clear water handling
- Water supply for domestic use in apartments, Buildings and hotels.
- KMP Series Three Phase Pumps : Single stage, High speed horizontal, Centrifugal , Monoblock with volute type delivery casing

FEATURES

- Can withstand wide voltage fluctuation – from 300-440 volts.
- Suction lift up to 7.5 meters.
- Top flat efficiency curve : minimum efficiency variation in the entire operating range
- Efficiency at par with internationally available pumps – higher up to 10 points than minimum required by Indian standards specification
- Models are with IP – 44 protection. Models with IP – 55 protection are also available on request
- Class of insulation 'B' ('F' Class for 9.3 kw and 11.0 Kw ratings).
- Designed to prevent overloading and motor burning
- Dynamically balanced rotating parts ensure minimum vibrations
- Replaceable wearing parts results in longer life
- Designed for automatic air release during priming
- Continuous rated motor
- Inside and outside of pump covered by anticorrosive paint

RANGE

- Head : Up to 90 meters
- Capacity : Up to 40 liter per second
- Power rating : Up to 30 hp

MATERIAL OF CONSTRUCTION

- Impeller : cast iron
- Delivery casing : cast iron
- Motor body : cast iron
- Shaft : EN-8
- Shaft sleeve : SS - 410

OPTIONAL SUPPLY

- Impeller : Bronze / stainless steel
- Shaft : Stainless steel
- Shaft Sleeve : Chrome Steel



*Are available in monoblock seal version only and also as a bare pump and flange mounted version with different MOC

"KCMP" SERIES

WATER RATING CHART

APPROXIMATE PERFORMANCE OF KCMP SERIES, 2 POLE, MONOBLOCK PUMP RATED VOLTAGE, 50 HZ, THREE PHASE A.C. POWER SUPPLY																				
PUMP MODEL	POWER RATING		PIPE SIZE		TOTAL HEAD IN METER															
					6	8	10	12	14	16	18	20	22	24	26	28	30	32	34	36
	KW	HP	SUC	DEL	CAPACITY IN LITERS PER SECOND															
KCMP-0515	0.37	0.5	25	25	2.0	1.9	1.8	1.0	0.2											
KCMP-130	0.75	1.0	25	25			2.7	2.3	2.1	1.8	1.3	0.9	0.7	0.4	0.0					
KCMP-115	0.75	1.0	40	40		5.4	4.7	3.8	1.7	1.5										
KCMP-224	1.5	2.0	50	50				5.8	5.3	5.0	4.7	3.5	3.0	2.0	2.0	1.2				
KCMP-325	2.2	3.0	65	50			9.2	8.8	8.4	7.9	7.4	7.0	6.4	5.8	4.9					
KCMP-335	2.2	3.0	50	40				5.0	4.9	4.8	4.7	4.6	4.4	4.2	4.0	3.8	3.6	3.2	2.7	2.0
KCMP-515	3.7	5.0	100	100	32.8	31	28.0	24.2	19.0	12.8										
KCMP-520	3.7	5.0	80	80	23.5	22.8	21.9	20.8	19.4	17.7	15.9	13.9	10.8							
KCMP-527	3.7	5.0	80	65						14.2	13.4	12.6	11.6	10.3	8.7	5.8				
KCMP-538	3.7	5.0	65	50								8.5	8.4	8.3	8.1	7.8	7.6	7.1	6.5	5.8
KCMP-822	5.5	7.5	100	100				27.1	25.5	23.9	22.0	20.0	17.5	14.2						
KCMP-830	5.5	7.5	80	65						19.0	18.2	17.3	16.4	14.2	13.0	11.1				
KCMP-837	5.5	7.5	65	65										12.6	12.4	12.1	11.8	11.3	10.0	9.2
KCMP-1030	7.5	10.0	100	100				31.9	30.7	29.4	28	26.5	25	23.3	21.2	17.5		13		
KCMP-1331	9.3	12.5	100	100							33.3	32	30	28.5	26	23.3	19.5	13		
KCMP-1537	11	15.0	100	100							36.7	35.8	34.1	33.3	32	30	27.6	25	20	17.5

PUMP MODEL	POWER RATING		PIPE SIZE MM		TOTAL HEAD IN METER															
	KW	HP	SUC	DEL	28	32	36	40	44	48	52	55	60	64	68	72	76	80	90	94
					CAPACITY IN LITERES PER SECOND															
KCMP-550	3.7	5.0	50	40			4.1	3.9	3.7	2.7	2.0									
KCMP-852	5.5	7.5	65	50		8.6	8.1	7.5	6.8	5.9	4.5	3.5								
KCMP-1040	7.5	10.0	80	65	17.8	15.9	13.3	9.5			18 M HEAD AT 20 LPS									
KCMP-1065	7.5	10.0	65	50				7.5	7.1	6.8	6.4	6.0	5.3	4.3	3.0					
KCMP-1348	9.3	12.5	80	65	17.9	17.0	16.0	14.8	11.6		20 M HEAD AT 19 LPS									
KCMP-1372	9.3	12.5	65	50					8.0	7.9	7.8	7.6	7.2	6.2	5.6	3.0				
KCMP-1555	11.0	15.0	80	65		19.2	18.3	17.3	15.8	14.6	11.0	9.7								
KCMP-1575	11.0	15.0	65	50						8.3	8.0	7.8	7.4	7.0	6.5	5.8	4.5			

PERFORMANCE TABLE (SPEED 1450 RPM) DISCHARGE IN LPS															
PUMP MODEL	KW	HP	SUC	DEL		TOTAL HEAD IN METER									
						5	6	8	10	12	14	16	18	20	22
KCMP-512	3.7	5	100	100			34	31	27	22					
KCMP-810	5.5	7.5	150	150		63	60	53	41						
KCMP-818	5.5	7.5	100	100					34	32,1	29	25,5	19,2		
KCMP-1014	7.5	10	150	150			73	68	51	30,4	18,3				
KCMP-1022	7.5	10	100	100							36,3	33	29,2	24 18	

"KEG" SERIES

APPLICATION

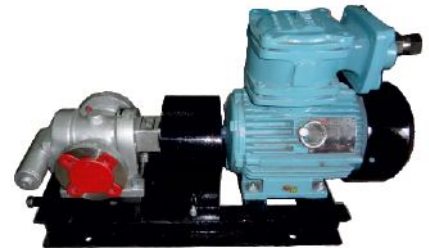
- "KEN" Rotary gear pumps are useful for handling following viscous and semi viscous liquid.
- Clean lube oil, Castor oil, Coconut oil, Ground nut oil, Cotton seed oil and Hydraulic oil.
- All kind of vegetable oils.
- Paints & Varnish , Viscous Chemical , Printing Ink.
- All Kind of fish and animal oils.
- Soap Solutions , Glycerin , Glycol and Glue
- Sugar molasses and syrups.
- Rotary gear pumps are widely used in paper mills, refineries, Steel mills and textile Industries.

EXTERNAL GEAR PUMP



FEATURES

- All Positive displacement rotary gear pumps are self priming pumps with suction lift of 5 meters at mean viscosity and speed 1440 rpm
- The KEG series of KEN pump has a modified profile of teeth to give accurate discharge within the pressure range .
- The helical gear design delivers constant volume without any pulsation. It also reduces internal slippage and gives high volumetric efficiency.
- Compact in size and highly economical
- All these are self lubricated pumps recommended for use where the liquid to be transferred has lubrication properties hence the bearing is lubricated by the pumping fluid and do not need any external lubrication.
- Easy maintenance due to availability and interchangeability of spares.
- All KEN gear pumps are designed and assembled with close tolerances to reduce the mechanical losses, thus it consumes lesser power and operates at higher efficiency.



RANGE

- Pressure : Up to 10 Kg/Cm²
- Discharge : 10 LPM to 500 LMP
- Pipe Size : 1/4" BSP to 3" BSP

CAST IRON CONSTRUCTION		STAINLESS STEEL CONSTRUCTION	
Pump Body	CI Gr. FG 200	Pump Body	CF-8M (SS-316)
Back / RV Cover	CI Gr. FG 200	Covers	CF-8M (SS-316)
Gears	EN-8	Gears	SS-316 Nitrided Spur type
Gear Design	Single Helix	Gear Design	Single Helix
Shaft	En-8 H & G	Shaft	SS-316 Nitrided
Shaft Seal	Oil Seal	Shaft Seal	PTFE Gland Packing / Mechanical seal (C/TC or C/SC)
PRV	STD Steel IN Built		
Temperature	80°C	Mouting Bracket	Cast Iron L-Type
Bush Bearings	Self-Lubricated Sntered	Temperature Limit	150°C
Special Note	In Built Reief valves provided in all models	Bush Beatings	PRFE Coated DU / PTFE Coated DU / Bronze CFT-PTFE

"KEG" SERIES

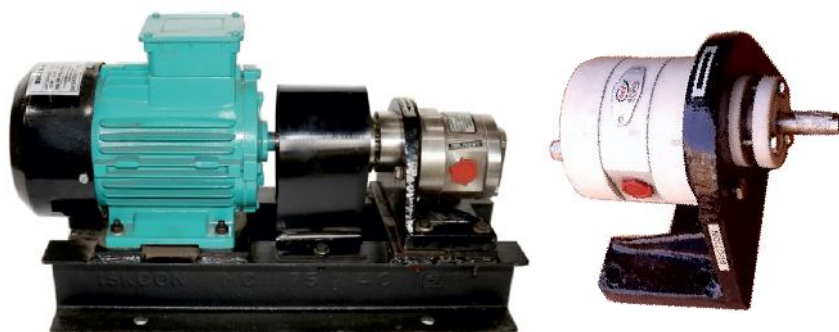
CAST IRON PUMP PERFORMANCE TABLE

MODEL	SUC DEL MM	CAPACITY		PRESSURE IN KG/CM²										NET WEIGHT KGS
		LPM	M³/H R	1	2	3	4	5	6	7	8	9	10	
				MOTOR REQUIRED IN HP (SPPED 1440 RPM)										
KEG-5	10 X 10	5	0.6	0.25	0.25	0.25	0.25	0.50	0.50	0.50	0.50	0.75	0.75	2.400
KEG-20	15 X 15	20	1.2	0.50	0.50	0.50	0.50	0.75	0.75	0.75	0.75	1.00	1.00	2.800
KEG-30	20 X 20	30	1.8	0.50	0.50	0.75	0.75	0.75	1.00	1.00	1.00	1.50	1.50	5.000
KEG-50	25 X 25	50	3	0.50	0.75	0.75	1.00	1.00	1.50	1.50	1.50	2.00	2.00	6.000
KEG-75	32 X 32	75	4.5	1.50	1.50	1.50	2.00	2.00	2.00	3.00	3.00	3.00	3.00	8.000
KEG-110	40 X 40	110	6.6	1.50	2.00	3	3.00	3.00	3.00	5.00	5.0	5.00	5.00	11.000
KEG-225	50 X 50	225	13.5	3.00	3.00	5	5.00	5.00	5.00	7.50	7.50	7.50	12.50	18.500
KEG-350	65 X 65	350	21	5.00	7.50	7.50	10.00	10.00	10.00	12.50	12.50	15.00	15.00	29.000
KEG-500	80 X 80	500	30	7.50	10.00	10	12.50	12.5	15.00	15.00	20.00	20.00	20.00	45.000

SS-316 PUMP PERFORMANCE TABLE

MODEL	SUC DEL MM	CAPACITY		POWER REQUIREMENTS IN AT KG/CM ² <small>DIFFERENT PRESSURE AT 400 SSU</small> VISCOSITY OIL			WT OF PUMP IN KGS (APPROX)
		LPM	M ³ /HR	02 KG/CM ²	04 KG/CM ²	08KG/CM ²	
KEGS-025	10 X 10	5	0.3	0.25	0.25	0.75	3.5
KEGS-50R	15 X 15	15	0.9	0.5	0.5	1.0	3.8
KEGS-50	15 X 15	25	1.5	0.5	1.0	1.5	4.0
KEGS-100	25 X 25	50	3	1.0	1.5	2.0	6.0
KEGS-125	32 X 32	80	4.8	2.0	3.0	5.0	11.0
KEGS-150	40 X 40	125	7.5	2.0	3.0	5.0	15.0
KEGS-200R	50 X 50	150	9	3.0	5.0	7.5	21.0
KEGS-200	50 X 50	200	12	5.0	7.5	10.0	22.0

VISCOSITY	SPEED	CAPACITY
UP TO 500 CST	1500 RPM	100 %
500 - 1500 CST	1000 RPM	66 %
15000 CST	750 RPM	50 %
5000 - 15000	500 RPM	33 %
15000 - 30000	380 RPM	25 %
30000 - 50000	300 RPM	20 %
50000 - 100000	200 RPM	13 %
100000 - 200000	150 RPM	10 %



"KIG" SERIES

TYPICAL APPLICATION

- Transfer from tank to tank
- Emptying of barrels
- Lubricating and cooling of bearings ,gears, mechanical seals and machine tools
- Fuel oil booster

INTERNAL GEAR PUMP

SPECIAL EXECUTIONS

- Specially coated internals for pumping of non –lubricating liquids.
- Engineering plastics rotor set for chemicals & low viscosity fluids
- Specially designed pumps for vacuum duty applications
- Uni-directional

ADVANTAGES OF SIG PUMPS

- Single shaft – well supported at both ends
- High suction lift and low noise level as well as vibrations
- High volumetric and overall efficiency
- Continuous, pulsation free flow due to axial entry in pumping element
- Compact and light – weight design
- Ease of assembling and dismantling without disturbing the pipeline.
- Choice of oil seal / Mechanical seal / gland pack.
- Parts / Pumps interchangeable with well known brands.

LIQUID HANDLED

- Fuel oil
- Lube Oil
- Neutral liquids with lubricating properties

Material of construction cast Iron with
STANDERED GEARS



PUMP PERFORMANCE TABLE

MODEL	PIPE SIZE IN MM SUC DEL	DISCHARGE		PRESSURE IN Kg/Cm ²						NET WEIGHT KGS.
				0	2	4	6	8	10	
		LPM	M3/HR	MOTOR REQUIRED IN HP (SPPED 1440 RPM)						
KIG-10	15 X 15	10	0.60	0.25	0.25	0.50	0.5	0.75	0.75	3.000
KIG-15	15 X 15	15	0.90	0.50	0.50	0.50	0.75	0.75	1.00	3.300
KIG-20	15 X 15	20	1.20	0.50	0.50	0.75	0.75	1.00	1.50	3.600
KIG-40	25 X 25	40	2.40	0.50	0.50	0.75	1.00	1.50	2.00	6.800
KIG-80	40 X 40	80	4.80	1.00	1.00	1.50	2.00	3.00	3.00	8.500
KIG-125	40 X 40	125	7.50	2.00	3.00	3.00	5.00	5.00	7.50	24.000
KIG-150	40 X 40	150	9.00	2.00	3.00	3.00	5.00	7.50	7.50	25.000
KIG-175	40 X 40	175	10.50	2.00	3.00	5.00	5.00	7.50	7.50	26.500

"KFIG" SERIES

ABOUT

FUEL INJECTION GEAR PUMP

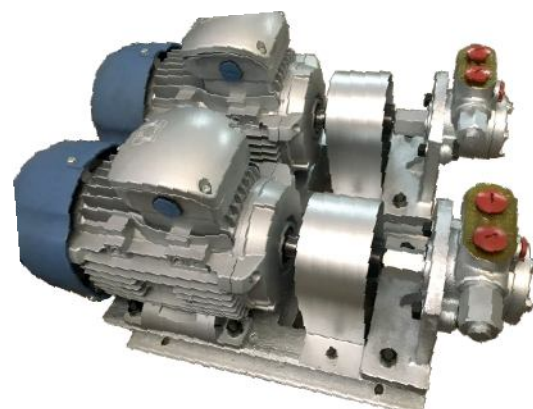
- A Range of high quality positive displacement gear pumps for fuel injection in industrial burners.
- These pumps provide fuel at finely controlled pressure and flow rates for optimum combustion resulting in long term fuel saving and reduced pollution.
- The perfectly designed and perfectly finished which having lost wax method known as investment casting & having grade 30c Iron and stainless steel
- 40 % Weight reduce compared to regular model
- Standard mounting & easy to install.

APPLICATION

- Oil Burner, Boilers, Hydraulic drive and Pressure pump
- Force feed lubrication
- Booster pump for heavy diesel engines
- Pumping for filtration
- Bitumen tank burner
- Dryer burner of hot mix plant
- Most suitable for LSHS furnace oil, L.D.O. HSD

FEATURES

- Manufactured from specially selected material & processed to close to tolerances for a long, trouble free working life.
- Gear & shaft of alloy steel & heat treated.
- Mechanical dynamic oil seal system for high temperature & high speed use, for zero leakage.
- Self lubrications, Self priming
- Built in pressure valve
- Standard mounting dimensions for easy replacement



PUMP PERFORMANCE TABLE

PUMP MODEL	SUC X DEL SIZES	CAPACITY IN LPH	PRESSURE IN Kg/Cm ²	RPM	RECOMMENDED HP	
					3 Kg/Cm ²	30 Kg/Cm ²
KFIG-A30	3/8" X 3/8"	30	0-30	1440	0.25	1.0
KFIG-A60	3/8" X 3/8"	60	0-30	1440	0.25	1.0
KFIG-A90	3/8" X 3/8"	90	0-30	1440	0.25	1.0
KFIG-B150	1/2" X 1/2"	150	0-30	1440	0.25	1.8
KFIG-B150X2	1/2" X 1/2"	300	0-30	2880	0.25	1.5
KFIG-B300	1/2" X 1/2"	300	0-30	1440	0.25	1.5
KFIG-B450	1/2" X 1/2"	450	0-30	1440	0.25	1.5
KFIG-B600	1/2" X 1/2"	600	0-30	1440	0.25	2.0
KFIG-C1000	3/4" X 3/4"	1000	0-30		0.75	3.0
KFIG-C1500	3/4" X 3/4"	1500	0-30		0.75	3.0
KFIG-C2000	3/4" X 3/4"	2000	0-30		0.75	5.0
KFIG-C2500	3/4" X 3/4"	2500	0-30		0.75	5.0
KFIG-D3000	1" X 1"	3000	0-30		1.5	7.5
KFIG-D4000	1" X 1"	4000	0-30		3	12.5
KFIG-E6000	1 1/2" X 1 1/2"	6000	0-30		3	15.0



SHUTTLE BLOCK PUMP

"KSP" SERIES

APPLICATION

All clear liquids without solid suspensions like diesel, petrol, LPG, oil, solvents, syrup, dm water, chemicals, steam boiler feeding, evacuation of condensate water, boosting of pressure, as a drum/barrel pump.

FEATURES

- All wetted parts of pumps are made from lost wax process (investment casting), so surface finish is excellent. Smooth flow path/ hydraulic passage and no casting defects like blow holes, cracks etc. are present.
- Centripetal / regenerative impeller for better suction.
- Pumps will be normally available in CF-8m /CF-8 (Gun metal, Alloy-20) and also in other material as per customer's requirements.
- Single /multistage pumps to handle crystal clear liquids for high pressure duties.
- Very quick priming & no need of foot valves.
- Very high suction capacity up to 8 meters without much noise
- Various types of sealing arrangements as per customer's liquid's characteristics.
- Normally fitted with carbon/ceramic seal faces with teflon cup and viton rubber.
- Pumps are available in monoblock and in bare type also with flameproof motor.
- All motors are of "TEFC" type
- Pump can be offered with electro polishing for some special requirements.
- Can handle temperature up to 80°C
- Trolley mount available.
- Also available with 120 Volt / 60 Hz.
- Custom built pumps are available.

SELF PRIMING PUMP



KSP-2/3



KSP-1



KSP-5/6

WATER RATING CHART

MODEL	HP X RPM	SIZE	HEAD IN METERS													
			5	10	15	20	25	30	35	40	45	50	60	65	75	
KSP-0	0.5 X 2900	12 X 12	15	10	8	5	0			DISCHARGE						
KSP-1	0.5 X 2900	25 X 25	38	30	22	18	12				IN					
KSP-2	0.5 X 2900	25 X 25	30	26	22	15	10					LITRE				
KSP-3	1 X 2900	25 X 25	50	44	40	36	22	15	10	5			PER MINUTE			
KSP-5	1 X 1450	25 X 25	62	55	50	40	35	28	20							
KSP-6(2-STAGE)	2 X 1450	25 X 25	80	68	62	58	52	50	42	40	35	25	18	10		

Performance are at 2900/1450 RPM, 50 Hz and tested with Clear Water.

Due to constant R & D activity, detail's are subject to change without prior notice.

PUMP MODEL NO	SUCTION AND DELIVERY	HEAD IN METER	POWER IN HP	PERFORMANCE TABLE FOR SP SERIES					
				PERFORMANCE AT 1450 RPM					
		15	1	LPM	125	95	70	55	
KSP-8(1-STAGE)	40	25	2	METER	9	15	20	25	
		20	1.5	LPM	125	120	102	95	86
KSP-9(2-STAGE)	40	25	2	METER	15	20	25	30	35
		35	3						



"KPP" SERIES

APPLICATION

- Phosphoric acid plants, Gas washing plants, Rayon plants, caustic soda plants for corrosive acids & basics, effluent treatment handling.

FEATURES

- Small size bare / monoblock poly-propylene pumps.
- Fitted with seal / gland or (PTFE bellow Mechanical seal.)
- Shaft is of SS-304 / 316 with ceramic sleeve
- Very economical models as pumps made with minimum parts.
- Very easy maintenance.



PERFORMANCE CHART (WITH SEMI OPEN IMPELLER)

MODEL	H.P	SIZE	HEAD IN MTR.					
			6	8	10	12	16	20
KPP-2	0.5	25 X 25	0	120	110	90	DISCHARGE IN LPM	
KPP-3	1	25 X 25	0	150	142	118	60	-
KPP-4	1.5	40 X 25	0	162	148	120	90	44

- Performance are at 2900 RMP, 50Hz and tested with clear water
- Due to constant R & D activity, details are subject to change without prior notice.

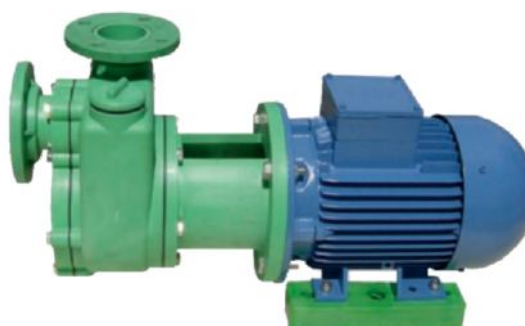
PLASTIC SELF PRIMING PUMP

APPLICATION

- Sea water Transfer chemical Transfer
- Barrel Transfer water Treatment

MATERIAL OF CONSTRUCTION :

All wetted parts in PP Material with SS 316 Shaft and Ceramic shaft sleeve. Fitted with Mechanical seal.



"KHPP" SERIES

APPLICATION

- Water treatment Plant
- Effluent Treatment
- Filter Press for dyes and chemicals
- Fertilizer Plants Thermal and atomic power plants
- Drugs & Pharmaceutical Industries
- Descaling of Tubes
- Scrubbing of corrosive gases like Cl_2 , Br, I, SO_2 , NH_3 , F_2 Etc.
- Excellent for vacuum ejectors
- Transferring of concentrated HCL from road tankers
- Paper & Pulp industries
- Pickling in steel rolling mills
- **Caustic soda plants :**
Chlorinated Brine, Conc. HCL, Dilute H_2SO_4 etc.
- **PHOSPHORIC Acid Plants :**
 H_3PO_4 , H_2SO_4 , HF and their mixtures with or without solid (gypsum) up to 40% conc.
- **Gas Washing Plants :**
Scrubbed Liquids containing CL_2 , BR_2 , F_2 , I₂, SO_2 , SO_3 , CO_2 , NH_3 , Gases etc. with solids replace Hast Alloy.
- **Rayon Plants :**
Spin bath solution (H_2SO_4 , $ZNSO_4$, $NaSO_4$, etc.)
- **Electro Plating**

HORIZONTAL POLYPROPYLENE



MATERIAL OF CONSTRUCTION

- **CASING :**
Top centerline discharge and Integrated flanges, Single piece, joint less casing formed out of Injection molded polypropylene / PVDF / UHMWPE.
- **IMPELLER :**
Hydraulically balanced and accurately matched to casing profile, the semi open type impeller with particle shroud and glass finished smooth flow passage ensure high efficiency low NPSH Performance. Impeller made from compressor molded polypropylene PVDF / UHMW.
- **SHAFT :**
The shaft is made from SS 304 protected by shaft sleeve of alloy -20 or alumina field Teflon or ceramic.
- **BEARING HOUSING :**
Made form heavy duty graded casting.
- **BEARING :**
SKF Ball Bearing
- **MECHANICAL SEAL :**
Rotary part of seal is made from glass field Teflon & stationary part of seal is made from high alumina field ceramic.
- **DISTANCE PIECE :**
Heavy duty one piece injection molded poly propylene.

RANGE

- Head Up To : 60 mtrs
- Pump size : 25 mm to 150 mm
- Capacity : 180 M^3/hr
- Speed : 1440/2880 rpm at 50 Hz & 1750/3500 rpm at 60 Hz
- Temperature : up to 110c

TEMPERATURE RESISTANCE

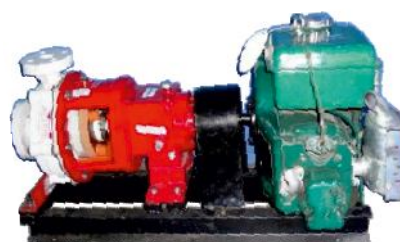
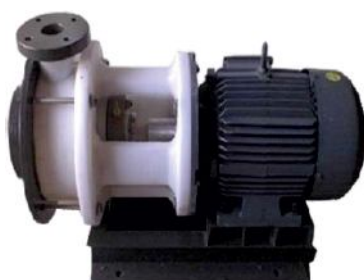
- PP 50 TO 80c
- PPH 90 TO 100c
- PVDF 100 TO 115c



"KHPP" SERIES

WATER RATING CHART

PERFORMANCE TABLE										
MODEL	SIZE	IMPELLER DIA	HP X RPM	CAPACITY IN LPM & (HEAD IN METERS)						
KHPP-100	25 X 25	100	1 X 2900	4	6	7	9	10	12	HEAD
				200	167	133	83	50	0	FLOW
KHPP-120	40 X 32	120	2 X 2900	5	7	11	13	15	16	HEAD
				317	250	167	133	67	0	FLOW
KHPP-130	50 X 40	148	3 X 2900	9	14	17	21	25	25	HEAD
				367	300	217	133	83	0	FLOW
KHPP-160R	40 X 40	142	3 X 2900	5	10	15	18	20	23	HEAD
				417	367	250	150	83	0	FLOW
KHPP-50	75 X 40	205	3 X 1440	5	10	11	12	13	14	HEAD
				500	417	333	167	83	0	FLOW
KHPP-160	75 X 40	157	5 X 2900	10	15	20	25	27	30	HEAD
				500	433	300	133	83	0	FLOW
KHPP-55	75 X 50	212	5 X 1440	6	10	12	14	15	10	HEAD
				750	417	500	250	83	0	FLOW
KHPP-170	75 X 50	160	7.5 X 2900	10	15	20	25	30	33	HEAD
				833	667	583	333	117	0	FLOW
KHPP-40	50 X 40	190	12.5 X 2900	25	30	35	40	45	50	HEAD
				667	584	500	415	167	0	FLOW
KHPP-55H	50 X 50	210	15 X 2900	30	35	45	50	55	60	HEAD
				1134	834	583	417	250	0	FLOW



"KHO" SERIES

APPLICATION

- Ideal for fountains, domestic use in buildings,
- Hotels, gardening and irrigation, even in industries
- For clear water handling and special pumps built for high pressure and dirty water.

FEATURES

- Horizontal submersible pump set
- Water filled submersible pump set with copper motor/Aluminium Rotor
- Available in 1 and 2 stages
- High efficiency
- Made pump as per Customers special applications
- Available in cast iron / stainless steel construction
- Always remain under water, no need of priming / foot valve
- No foundation
- Maintenance free

HORIZONTAL OPENWELL SUBMERSIBLE PUMP



PERFORMANCE CHART FOR OPENWELL PUMP SET

SINGAL PHASE (210V) & THREE PHASE (415V) OPENWELL SUBMERSIBLE PUMP SET

MODEL	H.P	HEAD	SIZE	TOTAL HEAD IN METER (50Hz, 2800 R.P.M, A.C.SUPPLY) DISCHARGE											
		IN FEET	IN MM	6	8	10	12	14	16	18	20	22	24	26	28
KHO-01	0.5	50	25X25	2.3	2	1.7	1.3	0.9	0.3						
KHO-05 S	1	65	25X25	3.5	3.2	3	2.8	2.5	2.1	1.9	1.6				
KHO-06 B	1	85	25X25				3.8	3.6	3.2	2.8	2.3	1.9	1.5	1.2	
KHO-07	1	65	40X40		5.8	4.91	4.5	4.2	3.1	2.2	1.6				
KHO-11	1.5	85	40X40					5.28	4.8	4.3	3.9	3.6	2.8	2.1	1.2
KHO-13	1.5	60	50X50				5.8	5.7	4.8	4.4	3.6				
KHO-14	1.5	45	65X65	10.7	10.1	9.5	8.4	6.5							
KHO-22	2	85	50X50	8.3	7.9	7.5	7	6.5	5.8	5	4.4	3.5	2.5	1.9	
KHO-23	2	65	65X50	11.7	11	10.6	10	9.3	8.5	7.5	6.5				
KHO-34	3V7	85	65X50	11.8	11.2	10.8	10.1	9.5	8.7	7.8	6.6	5.2	3.8	2.2	

"KHO" SERIES

WATER RATING CHART

MODEL	HP	SIZE IN MM	HEAD IN METERS																																					
			6	8	10	12	14	16	18	20	22	24	26	28	30	32	34	36	38	40	42	44	46	48	50	52	54	56	58	60	62	64	66	68	70	72	74	76		
KHO-22TP	2	50X50	605	560	520	485	435	400	340	268	200	22																												
			720	688	640	598	568	488	438	360	198																													
KHO-38	3	65X50	730	700	672	466	610	590	544	482	440	378	320	60																										
KHO-39	3	65X65	1010	950	900	832	735	680	560	400	40																													
KHO-41	3	65X50	800	770	710	670	628	600	550	500	400	420	320	210	136	40																								
KHO-42	3	65X65	1055	978	920	855	770	680	590	400																														
KHO-54	5	65X50		908	878	840	800	764	722	566	640	590	540	484	470	340	220	120																						
KHO-55	5	65X65	1150	1095	1054	1004	960	915	860	780	700	612	532	300																										
KHO-63	5	65X50		928	900	868	828	796	760	718	680	640	588	522	480	412	300	232	92																					
KHO-64	5	65X65		1110	1076	1030	990	956	894	828	770	664	580	380	120																									
KHO-71	6.5	65X50			985	950	920	895	860	832	810	770	730	660	610	548	480	400	240	144																				
KHO-72	6.5	65X65	1166	1130	1105	1080	1048	1026	988	940	870	790	730	650	530	360	90																							
KHO-82	7.5	65X50		924	920	912	906	900	892	888	880	872	860	81	778	720	678	640	572	508	420	250	100																	
KHO-85	7.5	75X75				1700	1620	1560	1480	1378	1300	1172	1040	840	840	370	42																							
KHO-86	7.5	100X100		1790	1720	1640	1560	1488	1406	1320	1240	1080	320																											
KHO-91	10	65X50		970	960	950	940	936	930	920	910	904	886	890	880	868	850	820	770	732	692	632	610	588	502	440	252	140	40											
KHO-93	10	75X75		1560	1540	1516	1490	1470	1448	1416	1388	1350	1280	1200	1108	1038	920	810	620	400	128																			
KHO-94	10	100X100			2030	1940	1870	1800	1720	1640	1585	1510	1430	1300	1135	130																								
KHO-101	12.5	65X50			1030	1028	1024	1020	1018	1016	1014	1012	1010	1008	1006	1000	996	100	996	990	980	972	920	886	848	810	766	760	720	650	600	560	440	280	200					
KHO-103	12.5	75X75			1550	1548	1546	1540	1536	1532	1530	1524	1520	1508	1492	1462	1400	1320	1250	1188	1080	1000	880	720	120															
KHO-104	12.5	100X100					2060	200	1990	1870	1790	1730	1660	1600	1525	1470	1425	1315	1200	800																				
KHO-151	15	65X50		998	997	996	995	994	992	990	989	988	987	986	985	984	984	983	982	981	980	978	972	968	940	892	870	828	800	770	740	700	660	610	520	440	320	160		
KHO-153	15	75X75		1560	1550	1540	1535	1522	1510	1504	1498	1490	1480	1470	1456	1450	1452	1455	1420	1352	1310	1240	1160	1028	880	460	80													
KHO-154	15	100X100					2260	2225	2160	2100	2030	1985	1940	1890	1820	1760	1700	1620	1550	1475	1350	1210	400																	

"BPO" SERIES

BACK PULLOUT PUMPS (WATER & CHEMICAL PUMPS)

APPLICATION

For pumping Clear / Turbid water / Chemicals & Volatile Liquids.
Air conditional plants , power station , Mine Drainage ,
Sprinkle systems fire fighting , Booster service , Oils Brine.

STANDARD : AS PER DIN 24255/6 & ISO 2858

OPERATING RANGE

- Delivery size up to 250 mm
- Capacity up to 990M³/hr
- Head up to 120 meters
- RPM 500 to 3600



"ACH" SERIES

BACK PULLOUT PUMPS (SLURRY APPLICATION)

APPLICATION

- "ACH" Type pumps are used in Chemical & Petrochemicals Industry, Food Industry, Dyeing , Sugar Industry, Paper & Pulp Industry, Fertilizer Units & Etc.
- Handling of all types of Liquids , Acids , Alkalis , Dyes , Hydrocarbons ,Corrosive Slurries (Solids Up to 15 mm) , Green , Black Liquor , Pulp (Consistency up to 2%) & Etc.

DESIGN

- "ACH" Type pumps are used in Chemical & Petrochemicals Industry, Food Industry, Dyeing , Sugar Industry, Paper & Pulp Industry, Fertilizer Units & Etc.
- Handling of all types of Liquids , Acids , Alkalis , Dyes , Hydrocarbons ,Corrosive Slurries (Solids Up to 15 mm) , Green , Black Liquor , Pulp (Consistency up to 2%) & Etc.

OPERATING RANGE

- | | |
|----------------------------|---------------------------------|
| Capacity | : Up to 600 M ³ /Hr |
| Head | : Up to 180 Mtrs (590 Feet) |
| Temperature | : Up to 200° C (392° F) |
| Casing Pressure | : Up to 24 Kg / cm ² |
| Pump size (Delivery bore) | : DN 25 mm to DN 200mm |
| Speed | : Up to 2900 rpm |
| Direction of rotation | : Clockwise from drive end |



"PS" SERIES

BACK PULLOUT PUMPS (PULP APPLICATION)

APPLICATION

"PS" Type pumps are used in paper & pulp industry, food industry, sugar industry, efficient plants, sea water desalination plants, chemical & petrochemicals industry, power stations and absorption plants in environmental engineering & etc. Handling of pulp & paper stocks up to 5% consistency heavily contaminated liquids, raw sewage, chlorinated water & etc

OPERATING RANGE

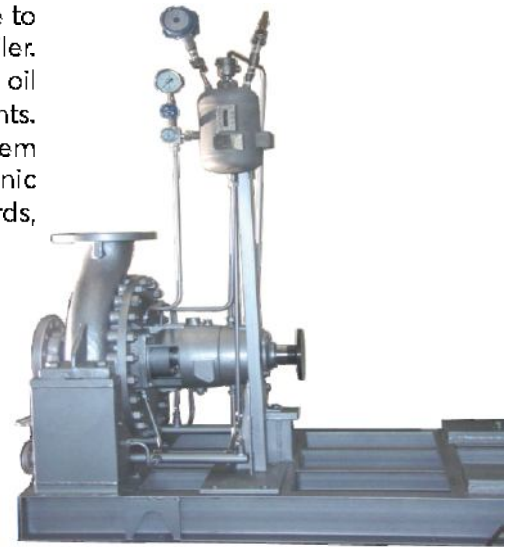
- | | |
|----------------------------|---------------------------------|
| Capacity | : Up to 600 M ³ /Hr |
| Head | : Up to 180 Mtrs (590 Feet) |
| Capacity | : Up to 2500 M ³ /Hr |
| Head | : Up to 80 Mtrs (262 Feet) |
| Temperature | : Up to 140 C (284 F) |
| Casing Pressure | : Up to 22 Kg / cm ² |
| Pump size (Delivery bore) | : 65 mm to 400 mm |
| Speed | : Up to 1480 rpm |
| Direction of rotation | : Clockwise from drive end |



THERMIC FLUID PUMP

APPLICATION

These pumps are normally made from WCB/SS Material which are able to withstand with high Temperature application and hot oil transfer in boiler. Our pumps are suitable for both organic and inorganic fluids and used in oil refineries, food, chemical, textile industries and sea water desalination plants. These pumps are equipped with water/self cooling feature that makes them suitable for the applications in heat transfer plants and handling of organic heat transferring of oils. In compliance with the latest industry standards, these pumps are designed with heavy duty bearings.



OPERATING RANGE

- Capacity : up to 250 M³/hr
- Temperature : up to 350°C
- TDH : up to 95 m
- Working Pressure : up to 20 Bars
- Delivery Size : up to 100 mm
- Speed : 960/1450/2900 rpm.

HORIZONTAL SPLIT CASING PUMP

FEATURES

- Horizontal and vertical Execution and Centre Line Suspension
- Gland Pack / Mechanical Seals
- 3 stage HSC Pump with Head up to 170 mtrs and flow up to 350 m³/hr for Condensed Extraction.
- Bush Bearing arrangement
- Bearing Cooling arrangement
- High head pumps have Double Volute Casing
- Two stage pump-single entry closed type with Impellers Back to Back

- Capacity up to 18000m³/hr
- Head up to 270m



APPLICATION

1. Water supply
2. Building Services
3. Circulating Water Systems
4. Paper Mills
5. Water / Effluent Treatment
6. Pharmaceuticals
7. Irrigation
8. Sugar Mills
9. Ports and Docks
10. Vegetable Oil Mills
11. Air Conditioning
12. General Industry Requirements
13. Fire fighting

IN-LINE CENTRIFUGAL PUMP

APPLICATION

- "KEN" Volute casing IN-LINE centrifugal pumps Type
- RIL are space saving pump units designed for easy installation and used generally for circulating clean non-aggressive fluids.
- Water supply Systems
- Water circulation /Transfer
- Hot water Circulation
- Agriculture
- Industry
- Ship Building
- Cooling Towers
- And many other Applications



OPERATING RANGE

- Horizontal and vertical Execution and Centre
- Capacity : up to 280M³/hr
- Head : up to 95 mtr
- Higher capacity and available on request
- Material of Construction : CI/Bronze/SS Etc.

RUBBER LINED PUMP/CERAMIC COATED

FEATURES

- **Construction :**
All wet parts coming in contact with liquid pumped are either lined on cast Iron or made appropriate corrosion resistance Non-metallics.
- **Drive :**
Pumps are mainly arranged from a coupling drive or V belt drive on request
- **Impeller :**
Semi-Open type rubber lined Impeller handles maximum solid particles without load on pump's Efficiency
- **Shaft :**
EN-9 OR SS 316
- **Sleeve :**
Alloy-20 , Ceramic , FRP
- **Ball Bearing :**
Inboard bearing is pressed on shaft (En-9 / SS 316) and is free to float axially in frame which carries radial load only. Outboard bearing is shouldered red and locked on shaft with locknut and washer and in bearing housing to carry radial and any unbalanced thrust load. All bearing fits are precision bored.
- **Gland Packing :**
Pumps are fitted with gland packing compatible with the liquid to be handled.

APPLICATION

- Hydraulic Acid at all Concentrations
- Dilute Sulphuric Acid
- Pigment Slurries
- Lime Slurry / Milk of Lime
- Phosphoric Acid Solutions
- Paper Stock
- Industrial effluents
- Ore Slurries
- Acidic Slurries
- Abrasive Slurries
- Sea Water

OPERATING RANGE

- 10 M³/hr - 40 M³/hr
- Head Up to 20 meters
- Liquid Column
- (Higher Models Available on Request.)



For Abrasive Liquids:
Suspension with fine abrasive solids
Up to 3 mm slurries , Calcium Hypochlorite,
Potassium Hypochlorite , Copper Oxychloride ,
Iron Ore Slurry, Coal Ash Slurry , River-Bed Gravel Abrasive Silt.

PTFE LINED PUMPS

FLUORO-POLYMER LINED-PVDF/FEP/PFA LINED

These pumps are designed for handling of most served industrials duties & available in variety of lining materials to suit different requirements involving highly aggressive media at elevated temperature.

The wet parts of the pumps are lined with following fluoro-polymers.

- 1) PVDF (Polyvinylidene fluoride)
- 2) FEP (Fluorinated ethylene propylene)
- 3) PFA (Perfluoroalkoxy)

These pump has excellent chemical as well as temperature resistance

similar to PTFE & is cost effective alternative to expensive metals & alloys like hast alloy, tantalum, nickel etc.

OPERATING RANGE

- Permits applications all aggressive, corrosive or toxic media
- Up to 200°C with or without abrasive slurries
- Max Head : Up to 100 MWC
- Max Capacity : Up to 200 M³/hr



FLAME PROOF PUMP

APPLICATION

These pumps are made with flame proof / explosion proof motor these pumps are self priming type, centrifugal type, vertical sump pumps type, mud pump type, gear type, multistage pump type, or any other type pump can be made as per requirement of customer. These pumps are widely used to handle petrol, kerosene, diesel, oil and solvents handling. Motors can be available with CMRI & DGMS certificate on request material of pumps & sealing arrangement can be made as per customer requirements or as per material to be handled.

Monoblock pumps are available on Request

OPERATING RANGE

- Capacity : up to 250 M³/hr
- Head : 200 MTRS
- Speed : up to 3600 RPM



HORIZONTAL HIGH PRESSURE MULTISTAGE CENTRIFUGAL PUMP

Pumps are single suction multistage segment centrifugal pumps which adopt energy-efficient hydraulic model, conform to centrifugal pump technical condition with wide performance range, high efficiency, reasonable structure, safe and steady operation, low noise, long life performance, easy installation and maintenance.

APPLICATION

- Irrigation – Sprinkler Installations
- Water Supply
- Pressure Boosting – Multi stories buildings, Hydro – Pneumatic
- Water Works Fire Fighting – Mining wash down Applications
- Hydraulic press / Circuits transfer & circulation hot & cold water
- Boiler feed pumps – Condensate pumps

OPERATING RANGE

- Capacity : 2500 LPM Maximum
- Head : 400 Mtrs Maximum
- Size : 1" to 6"
- Temperature : 140°C Maximum



FIRE FIGHTING PUMP

APPLICATION

A fire pump is a part of a fire sprinkler system's water supply and can be powered by electricity, diesel or steam. The pump intake is either connected to the public underground water supply piping, or a static water source (e.g. tank, reservoir, lake). The pump provides water flow at a higher pressure to the sprinkler system risers and hose stand pipes. A fire pump is tested and listed for its use specifically for fire service.

(by a third-party testing and listing agency if required)

OPERATING RANGE

- Capacity : 3000 US GPM,
- Head : 348 PSI,
- RPM : AS Per Your Requirement
- Frequency : 50 Hz / 60 Hz



HIGH PRESSURE PLUNGER PUMP

"KEN" High-Pressure (simplex / duplex / triplex / sixplex) plunger pump is a positive displacement pump. which can deliver high flow stream at high pressure with high efficiency. These pumps are also know as hydro test pump, pressure test pump, hydrostatic test pump.

OPERATING RANGE

- **Flow Range** : Up to 30,000 LPH
- **Pressure Range** : Up to 1000 Kg / Cm²
- **Temperature Range** : 30°C / TO 300°C
- **M.O.C** : AISI 316, AISI 304, AISI 410, CS, ALLOY-20 , HASTELLOY C & B, TITANIUM, MONEL, ETC
- **Wet And Cartridge** : Single / double acting (simplex / duplex / triplex / pentaplex) plunger
- **Valve** : Ball, Cone, Plate , Wing with or without spring loaded
- **Gland Packing** : U seal (PTFE, CHEVRON, PU) / Square rope.
- **Options** : Pressure relief valve, Pulsation Damper, Instrumentation and automation, completer Pumping systems

APPLICATION

- Airport & Ship Yards.
- Railway Workshop & Cleaning Yards.
- State Transport & Workshop.
- Industrial & Agriculture Purpose.
- Auto Two & Four Wheel Workshop for washing /cleaning application.
- RO water and sea water high pressure application.



DOSING-METERING PUMPS & DOSING SYSTEM

Dosing- Metering Pump is single acting reciprocating type positive displacement controlled volume pump which can deliver flow streams at adjustable & controlled rates in required process conditions. These pump are also known as injection pump, feed pump, proportioning pump, leak-less pump.

APPLICATION

- Water treatment chemical dosing.
- Effluent-Sewage treatment chemical dosing.
- Chemical - Solution preparation and metering package
- Corrosion Inhibitor dosing.
- Odorizing Injecting systems.
- Additive or catalyst injection package
- Hp-Lp dosing systems for boilers
- Polymerization additives
- Preparing-cleaning-Disinfecting solution dosing for CIP



UP to 1000 LPH
Max Pressure 150 Bar

"HT" SERIES MANUAL HYDRAULIC TEST PUMP

PRODUCT FEATURES

Manual Hydro Test Pumps are portable pumps and can be easily handled by one man. The pump unit mounted on fabricated M.S. Pail, which stores liquid for testing, as well as provide self base for testing. In this type of pump, separate foundation is not required. Manual Hydro Test Pumps are available with CI / MS / GM / SS Body, MS Fabricated Pail having water filling capacity 9 , 12 or 22 liters , SS Piston , CI / MS Handle SS Check Valve, Brass Pressure Release Cock , 4" Dial Pressure Gauge and 1.5 meters pressure Hose with end connections.



APPLICATIONS FOR HYDRAULIC TESTING

- Boilers , Pressure Vessels, C.I. Mains, Castings, Gas Cylinders
- Parts Subjected to Hydraulic Pressure Standard Accessories
- MS Fabricated Pail, Brass Foot Valve
- GM / SS Check Valve
- Brass Pressure Release Cock
- Pressure Hose With Attachments
- Pressure Gauge
- For Testing Up to 705 Kg/Cm² (10,000 PSI)

"MHT" SERIES MOTORISED HYDRAULIC TEST PUMP

PRODUCT FEATURES

- Electric Motorised driven system
- Totally Enclosed drive Mechanism
- Heavy duty precision gear box
- Large Air Chamber
- Self Oiling system & quick action Relief valve
- Totally Dependable , Reliable and Efficient performance.

PERFORMANCE RANGE

- Test Pressure : Up to 1000 Kg/Cm²,
- Water Flow Capacity : up to 150 LPH,
- Motor : Up to 7.5 hp



AIR DRIVEN HYDROTEST PUMP

- Reliable, Easy to Maintain, compact and robust.
- No heat, flame or spark risk.
- Infinitely variable output pressure and flow capability.
- Air driven models do not require electrical connection, easy to apply automatic controls.
- Wide range of models and controls and options.
- Seals system designed for long working life, no airline lubricated required.
- Wide range of standard and customized liquid pump systems.

Range : Up to 10,000 Bar



PISTON PUMP

APPLICATION

- Agriculture / Industrial purpose
- Mineral Water & Soda Water Plants
- State Transport & Workshop
- Auto Two & Four Wheel Workshop
- Boiler & Steam Engines
- Railway Workshop & Cleaning Yards
- Airport & Ship Yards

BENEFITS

- Minimum Maintenance
- Very Easy to Operate
- Energy & Water Saving

STANDARD ACCESSORIES

- Overflow Control Valve
- Pump Stand
- Motor-Pump Pulley , Pipe T
- Piston Ring Set
- Nozzle Set , Pipe Nipple , Pipe Bend

DESCRIPTION	2 PISTON CI/SS	3 PISTON CI/SS	KE-3-40 CI/SS	KE-3-70 CI/SS
MINIMUM PRESSURE/NORMAL WORKING PRESSURE	200 PSI	300 PSI	710 PSI	995 PSI
MAXIMUM PRESSURE	350 PSI	450 PSI	1137-1422 PSI (80-100 Kg/Cm ²)	
PUMP RPM	600	540	350	360
BEARING HOUSING	CI OR ALU. DIE CAST	CI OR ALU DIE CAST	CI OR ALU DIE CAST	CI OR ALU DIE CAST
PRESSURE CHAMBER	CI/SS304/SS 316	CI/SS304/SS316	CI/SS304/SS316	CI/SS304/SS316
PISTON	SS-304 OR SS 316	SS-304 OR SS-316	SS-304 OR SS-316	SS-304 OR SS- 316
ELECTRIC MOTOR	1.5HP X 1440 RPM	3HP X 1440 RPM	5HP X 1440 RPM	5/7 HP X 1440 RPM



PULSATION DAMPENER

APPLICATION

- Energy storage
- Pulsation Damper/dampener
- Volume Compensator
- Pressure Compensator
- Emergency Energy Reserve
- Counter Balance
- Hydraulic line shock Damper
- Shock Absorber
- Hydraulic Spring
- Fluid Separator



Max Pressure : 300 bar, moc-SS/MS/PP

Max Capacity : 200 Ltr, Blader/Diaphragm make/Rubber/PTFE ETC.

SCREW PUMP

APPLICATIONS

The main components which characterize the pump are a metallic single helical rotary part ROTOR and fixed double helical resilient polymer part STATOR in which the rotor turns and thereby a complex progressive sealing line (csp) is maintained. Whilst the rotor rotates inside the stator, the cavities formed between them progress from suction to discharge end, gently carrying the media.

DRIVE ARRANGEMENTS

- DIRECT drive electric motor, geared motor, gear box, Mechanical Speed Variator, Eddy Current DC Drive, Hydraulic, Pneumatic, Petrol & Diesel Engines.
- For accurate and variable flow rates, AC Variable frequency Drives can be used.

SPECIFICATION

- Flow Rate : UP TO 100 M³ / Hr
- Differential Pressure 24 Bar
- Viscosity : UP TO 1,00,000 cst
(for more system pressures, contact factory assistance)
- Temperature : UP TO 150°C
- Suction Lift : 8 m Max



MATERIAL OPTIONS

- Housing Parts : AISI304, AISI316, AISI316L
 - Rotor & Shaft : AISI304, AISI316, AISI316L
 - Stator : NBR, HNBR, EPDM, CSM, Q
- white, food grade, abrasion resistant & high temperature resistant variants.

TRIPLE SCREW PUMP & TWIN SCREW PUMP

FEATURES

- Separate Screw and Shaft Assembly.
- Combination of material possible for screw & shafts.
- Independent Material of construction for Screw & Shaft respectively.
- Replacement needed for damaged part only.
- Change in performance characteristics possible by changing screws only.
- Change in pump design possible from long shaft to small shaft and Vice versa.
- Compact Design.
- Extremely good suction capability.
- Various Combinations Of Materials available.
- Pumps With Replaceable Liners.
- Partial/Full Heating Jacket Available In Various Designs.
- Different Sealing Arrangements Possible.
- Low NPSH Requirement.
- Casing Available in different Cast And Fabricated Design.
- Low maintenance cost.

APPLICATIONS

- Triple Screw Pumps with external or internal bearing are available in horizontal or vertical constructions, with or without heating arrangements and have single mechanical seals for shaft sealing.
- They handle all neutral lubricating liquids, have a compact space saving design and are self priming. Due to the precise manufacture of the screws and their profile, the possibility of getting a high suction lift is ensured. They operate continuously and run noiselessly.



"LOBE" PUMPS

A range of High Quality Hygienic Stainless Steel Positive Displacement Pumps for use in the food Process Industries

SALIENT FEATURES

- These Pumps are meant for high Mechanical Efficiency means less energy Consumption, Lower Cost Smaller Motors, Lower Drive Costs.
- Easy-clean pump of head which is ideal for in place cleaning, or can be rapidly stripped for manual cleaning, without disconnecting the pipe work.
- Positive, Uninterrupted Displacement by specially designed rotors creates a steady, gentle pumping action which does not shear, agitate or aerate the product.
- Pumping chambers are without pockets or crevices to harbor bacteria or contaminants. No Contact between moving parts and no internal bearings in the pump head.
- Solid stainless steel, ASI 316 quality, pump head, rotors and shafts. Food quality rubber covered and plastic rotors are also available.
- Robust, Cast Iron gear case enclosing oil Lubricated rolling bearings are precision timing gears.
- Generous distance separating the pump head from the gear case.
- End Connection / Port Flanged / Threaded – Customized.



TYPICAL APPLICATIONS FOR POSITIVE DISPLACEMENT

- **Dairy :**
Cream, Milk, Cheese, Curd & Whey, Cottage, Cheese, Yogurt, Margarine, Butter
- **Bakery :**
Batters, Flavorings, Frostings, Fruit Fillings, Fat & Oils , Sweeteners , Yeast Slurry Dough.
- **Meat Packing :**
Meat-Emulsions, Ground Meat, Pet Foods, Extracts , Minced Meat , Sausage Meat.
- **Beverage :**
Beer , Wort , Yeast , Alcohols & Wines soft Drinks , Fruit Concentrates , Fruit Drinks , Essences.
- **Pharmaceutical :**
Pill Pastes , Syrup , Slurries , Extracts , Latex Emulsion.
- **Canning :**
Tomato Paste , Fruit Paste , Cream Style , Vegetables , slurries , Puddings , Jams , Jellies , Salads Dressings , Mayonnaise , Baby Foods , Soups , Stews.
- **Confectionery :**
Syrups , Cream Fillings , Chocolates , Coffee Caramel.
- **Cosmetics :**
Heand & Face Creams , Lotion Shampoos , Dyes , Alcohols , Essential Oils.

OPTIONS

- Manual Control By-pass
- Relief Valve
- Jacked Rotor case
- Electric Heating Tapes
- Trolley



MODEL	PORT CONNECTION	MAXIMUM HEAD		MAX	PUMP MAX CAPACITY	
		BAR	PSI		LPM	IGPM
LOBE-100	25 MM (1")	7	100	960	100	22
LOBE-150	38 MM (1 1/2")	7	100	960	100	35
LOBE-200	50 MM (2")	7	100	720	300	67
LOBE-250	65 MM (2 1/2")	6	87	720	450	100
LOBE-300	80 MM (3")	7.6	87	600	480	110
LOBE-400	100 MM(4")	5	72	600	750	168



SEWAGE & DEWATERING SUBMERSIBLE PUMPS

APPLICATIONS

- Effluent with slurry and solids.
- Dewatering man-hole sewers.
- De-silting.
- Storm/Flood water transfer.
- Drainage of sewage from the building basements, hotel industry, wastes water from factories.
- Drainage of sewage from industrial process factories.
- emptying of septic tanks, cesspits and sewage pump stations.
- Pumping surface and drainage water from garages and sprinkler systems.
- Quick out installation
- Cooling Jacket Arrangement,
- Single phase pumps are provide with auto water
- level control & Thermal Protection.

MATERIAL OF CONSTRUCTION

- Motor Body : CI/SS,
- Cooling Jacket : MS/ SS,
- Casing : CI/MS,
- Impeller : Cast Iron / SS,
- Shaft : SS,
- Hardware : SS ,
- Oil Chamber : CI Quick Out
- Coupling : CI / SS
- Strainer : SS with 6 or 10 mm round holes ,
- Mechanical seal : TC/TC or Silicon Carbide ,Bi Directional Twin Mechanical seal with various face combination Looking to the application.
- Cable : PVC Insulated Double Sheathed Copper Conductor flexible Cable.

RANGE

- HP : UP To 200 HP
- RPM : 3000 / 1500 / 1000 RPM
- Size : UP To 12"
- Head : Up to 90 Mtr.
- Capacity : Up to 3000 lpm (In High speed pump), Up To 15,000 lpm (In Low Speed pump)
- Stage : One
- Solid Size : Up to 100 mm
- Concentration : Up to 30%



POLDER PUMPS AND AGITATOR PUMP

APPLICATIONS

- Dam / Construction sites,Dewatering Mines,
- Sea Water Pumping,Oil Mixed water,
- Intake Wells / Sump Wells,
- Canals,Turbine water,
- River Beds,Ash mixed water,
- Cement / Steel Plants,
- Thermal power Station.

OPERATING RANGE

- H.P. : 3.0 HP TO 200.0 H.P.
- Head : Up to 90 Mtrs.
- Capacity : Up to 11,000 LPM,
- RPM : 3000 / 1500,
- Stage : One / Two,
- Concentration : Up to 10,000 PPM.



VERTICAL SUMP PUMP

FEATURES

Vertical Centrifugal process pump can be used in any installation and especially where the saving of space is an important factor or where liquid is difficult to lift because of nature like temp, corrosiveness etc. These pumps are designed for use where the liquid to be handled is of highly corrosive nature or where non-adherence of product or zero metallic contamination is a must. These pumps are equally ideal for continuous or intermittent service for handling corrosive as well as ultra pure chemicals without fear of corrosion or contamination.

High Temperature services :

Maximum working temperature is 110°C / 200°C.

Length :

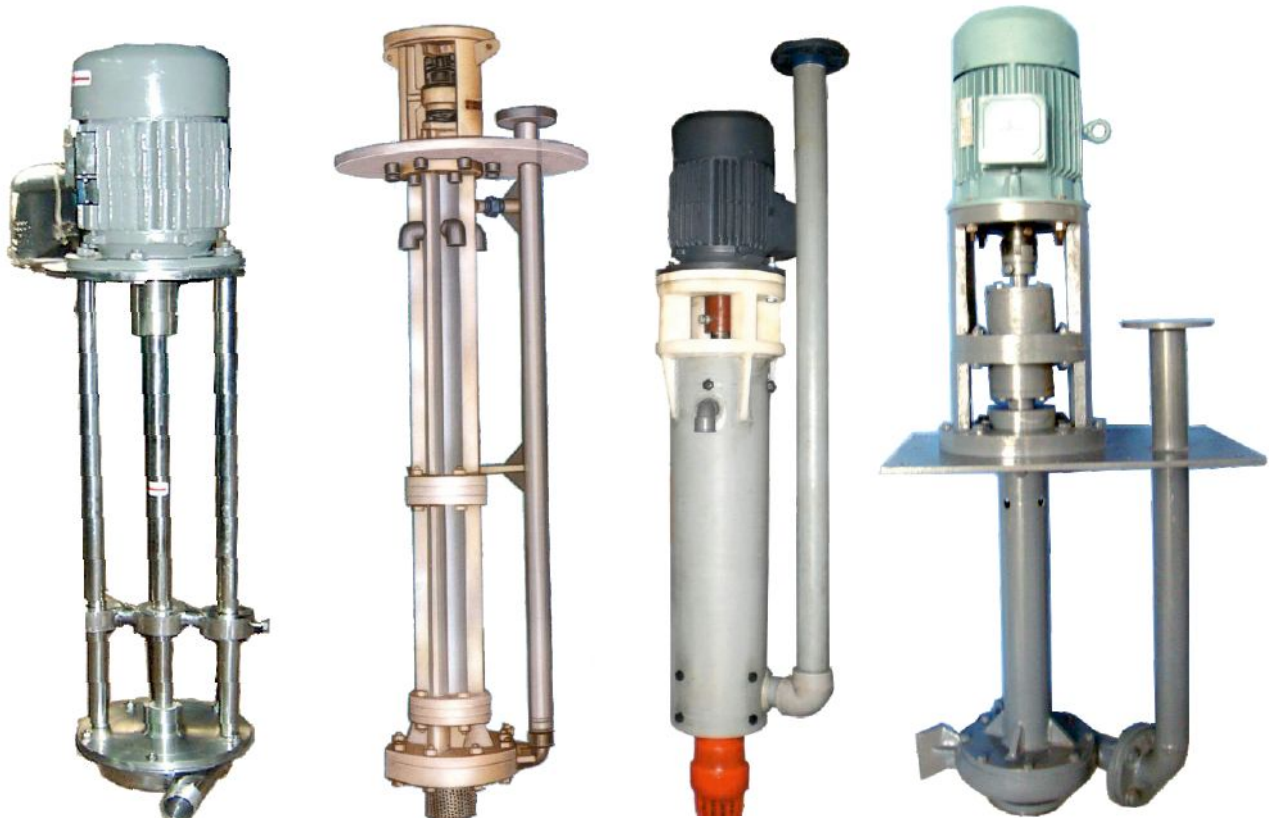
Pump lengths available from 1' to 12' with flow rate up to 50M³/h or 120 meter head. Higher capacities and head available on request and even multistage pump can be also made.

Models :

Available in conventional or tailor-made configuration. Several models such as suction extension with float switch, duplex pumping station with float switch (auto on/off device) are also available.

APPLICATION

- These pumps are in extensive use in the fields of
- Pollution Control.
- Filtration .
- Transferring Corrosive Chemicals .
- Slurries .
- Bio gas plants.
- Sewage.
- Waste water treatment plant.
- Phosphoric Acid Plant H_3PO_4 , H_2SiF_6 , H_2SO_4 , HF And Their Mixtures.
- Gas washing plant .
- Scrubbed liquids containing , FCl , SO_2 , Ammonia
- Water treatment plant .
- Any types of acidic water lifting .
- M.S Vertical pump are used for transfer of sulphuric acid 98 %.
- OLUM, CLOTO, NEPTHA



"KPMD" SERIES

ABOUT MAGNETIC PUMP

Magnetic drive design eliminates the conventional method of shaft coupling. Hence the pump casing is fully sealed from drive end which gives away the use of conventional sealing system. There is no seal used and so no troublesome seal repairing and replacement, leakage or production lost. Impeller and drive magnets are permanent rare earth magnets. They prevent slippage and ensure that full motor horsepower is converted into pumping power. All Pumps are rated for continuous duty with class "E" Insulation. All pumps are Centrifugal Semi-Open Impeller Type pumps and need priming before start up. SS-316 Magnetic pumps are available upto 5 HP.

APPLICATIONS & USER INDUSTRIES

Ideal for transfer of corrosive chemicals, plating chemicals, acids, dyes, solvents, toxic & fuming liquids, petrol, kerosene etc. Useful in chemical industries, pharmaceuticals and food processing industries. Electroplating, Galvanizing/ Anodizing plants. Laboratory equipments and PCB plants. Medical equipments and X-Ray film plants. Textile Dyeing houses. Liquid dispensing machines and Chemical Filtration equipments. For hazardous duty conditions with flame proof motors. High Efficiency due to permanent magnet power coupling.

ADVANTAGEOUS FEATURES

100% Leak Proof pumps due to magnetic drive arrangement. No shaft seal is used which automatically solves the problem of seal leakage and wear & tear. Friction free operation for reduced power consumption. High power permanent magnets ensure full power transfer and eliminates slippage. All pumping parts are Non-metallic, Which gives superior corrosion resistance, Simple and easy to operate, has Long life, is reliable and has trouble free operation.

SEAL LESS MAGNETIC DRIVE CHEMICAL PROCESS PUMP IN PP & PVDF CONSTRUCTION



RANGE

- Capacity : from 10 LPM upto 750 LPM
- Head : upto 40 mtrs.
- Material of Construction : Poly Propylene Glass Filled, PVDF upto 110 Deg C & SS-316
- Operating Temp : PP upto 80 deg C, PVDF upto 110 deg C
Special Pumps for high temperature upto 150°C and 250°C for SS-316

PUMP SPECIFICATIONS 2900 RPM

PUMP MODEL	INPUT/OUTPUT SIZE	Maximum Capacity LPM	Maximum Head Mtrs.	Motor HP	Full Load Current	Phase	Specific Gravity Limit	Weight
KPMD-15	14x14 mm nozzle	15	2.5	0.10 hp	0.15 Amps	Single	1.1	3 kgs
KPMD-30	18x18 mm nozzle	30	4	0.16 hp	0.20 Amps	Single	1.1	3.5 kgs
KPMD-50	20x20 mm nozzle	50	5	0.25 hp	0.50 Amps	Single/Three	1.2	5 kgs
KPMD-85	26x26 mm nozzle	85	9	0.50 hp	1.00 Amps	Single/Three	1.2	8 kgs
KPMD-125	26x26 mm nozzle	125	12	0.75 hp	1.25 Amps	Single/Three	1.3	10 kgs
KPMD-170	1"x1" Bsp/Flanged	175	14	1.5 hp	1.70 Amps	Three	1.3	12 kgs
KPMD-300	1½"x1½" Bsp/flanged	300	22	2 hp	3.5 Amps	Three	1.4	16 kgs
KPMD-400	2"x1½" Flanged	400	14	3 hp	3.5 Amps	Three	1.3	
KPMD-500	2"x1½" Flanged	500	30	3 hp	4.6 Amps	Three	1.3	
KPMD-600	2½"x2"	620	32	5 hp	7.5 Amps	Three	1.3	



"KVGP" SERIES

APPLICATION

- Water treatment Plant
- Effluent Treatment
- Filter Press for dyes and chemicals
- Fertilizer Plants Thermal and atomic power plants
- Drugs & Pharmaceutical Industries
- Descaling of Tubes
- Scrubbing of corrosive gases like Cl_2 , Br, I, SO_2 , NH_3 , F_2 Etc.
- Excellent for vacuum ejectors
- Transferring of concentrated HCL from road tankers
- Paper & Pulp industries
- Pickling in steel rolling mills
- Caustic soda plants :
Chlorinated brine, conc. HCL, H_2SO_4 etc. Other application are in metal refineries, pickling Installations, paper and fertilizer plants-in fact all chemical process industries.
- Phosphoric Acid Plants :
 H_3PO_4 , H_2SO_4 , HF and their mixtures with or without solid (gypsum) up to 40% conc.
- Gas Washing Plants :
Scrubbed liquids containing F, CL, SO_2 , Ammonia gases etc. With solids replace hast alloy.
- Rayon Plants :
Spin bath solution (H_2SO_4 , $ZNSO_4$, $NASO_4$, etc.)

VERTICAL GLANDLESS PUMP



RANGE

PP 50° TO 80 ° C
PPH 90 ° TO 100 ° C
PVDF 100° TO 115°C

MATERIAL OF CONSTRUCTION

- **CASING :**
Top centerline discharge and integrated flanges, single piece, joint less casing formed out of Injection moulded polypropylene.
- **IMPELLER :**
Hydraulically balanced and accurately matched to casing profile, the semi open type impeller with practical shroud and glass finished smooth flow passage ensure high efficiency low NPSH performance Impeller made from compressor moulded U.H.M.W
- **EXPLORER :**
Made from U.H.M.W
- **OVER FLOW BODY:**
Heavy duty, one piece, joint less design made from compressor moulded U.H.M.W
- **SHAFT :**
The shaft is made from SS 316 protected by shaft sleeve of U.H.M.W

SALIENT FEATURES

- No mechanical seal, stuffing box and internal bearings is needed
- No maintenance since the pump can even run dry indefinitely as there is no packing, bushes or internal Bearings.
- Reduction of downtime production losses in view of above features.
- All the wet-end parts are in solid molded construction to with stand corrosion and erosion.
- The impeller is semi-open type and used in our all-vertical pumps to suit both clear and polluted fluids.
- Pump mounted outside the suction tank and is not submerged type.
- Polypropylene is manufactured by solid injection molding process with high pressure hence.

MODEL	HP X RPM	PUMP SIZE	HEAD IN METERS									
			6	10	12	15	20	25	30	35	40	LPM DIA
KVGP-25/1/2	1 X 2900	25 X 25	130	50	0	-	-	-	-	-	-	110 MM
KVGP-40/2/4	2 X 1450	50 X 50	75	-	-	-	-	-	-	DISCHARGE		150 MM
KVGP-40/2/2	2 X 2900	40 X 25	250	150	100	-	-	-	-	IN		130 MM
KVGP-50/2/4	2 X 1450	50 X 40	266	183	-	-	-	-	-	LITRE		190 MM
KVGP-50/3/4	3 X 1450	50 X 40	400	300	200	0	-	-	-	PER		290 MM
KVGP-50/3/2	3 X 2900	50 X 40	480	415	350	325	200	0	-	MINUTE		140 MM
KVGP-50/5/2	5 X 2900	50 X 40	530	450	440	415	330	260	133	-	-	150 MM
KVGP-75/5/4	5 X 1450	75 X 65	-	500	430	400	160	-	-	-	-	200 MM
KVGP-75/10/2	10 X 2900	75 X 65	-	830	750	700	650	580	500	330	330	190 MM

FLEXIBLE SHAFT DRIVEN PUMP

Flexible shaft pumps are mini centrifugal pumps of submerged type they are widely used for pumping and draining in building & construction sites, tunnels, water reservoir, for wastewater discharging in industry, irrigation on farmland and so on. They are driven by Diesel and Gasoline engines & some mini type pumps can also use vibrator motor as their power. They have the features that are convenient to operate, large flow quantity and high delivery lift.

OPERATING RANGE

Supplied Pump Connected with Flexible Shaft OF 5.5 Meters.
Pump Design for max head to 40 meters.
Max discharge 1200 LPM.
Pump available with Motor or Engine.
Suction Size 3" and Delivery Size 2.5"

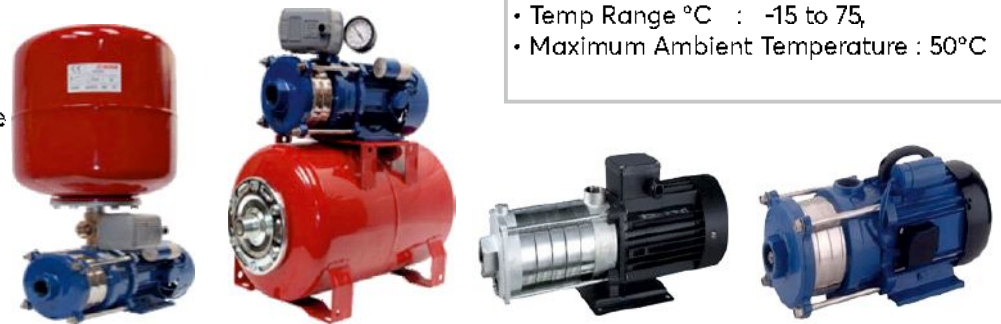


Flexible Shaft Driven Pump can be widely used to handle Dirty water from shallow pit and is also useful to Civil Contractors and Industries to handle water.

"PPH" SERIES HORIZONTAL CENTRIFUGAL MULTISTAGE MONOBLOCK PUMP

APPLICATION

- Feed Pumps for R.O. System
- Pressure Boosting Systems
- Pressure Jet-Cleaning
- Water Distribution
- Refrigerant Recycling
- Very Light and Non Aggressive
- Chemicals Transfer.
- Drip Irrigation System.



OPERATING RANGE

- Connections : 1" BSP Female Thread,
- Working Pressure Kg/Cm² : 1 to 7,
- Temp Range °C : -15 to 75,
- Maximum Ambient Temperature : 50°C

PRESSURE SYSTEM

APPLICATION

Automatic water supply pump is an automatic water supply pressure system which is consisted of electric pump, pressure box, pressure switch and connection head. This system possesses the functions of keeping a certain pressure and adjusting the water level. It is very suitable for using on water tower's water supply or residential district's water supply where several households water supply are requested.



VERTICAL TURBINE PUMP / LINE SHAFT PUMP

- General water pumping/conveying used for various industries.
- Spray and Injection water in sugar Industry.
- Cooling tower Circulation.
- Irrigation and drainage for agriculture.
- Process and Cooling water pumps for power plants.
- Fire fighting. / Sprinkle Irrigation
- Tube well Irrigation / Open well Irrigation and River / canal Irrigation
- Urban water supply / Rural water supply
- Domestic water supply in high rise building and water fountain
- Raw & Threaded water services / Mine D-ewatering.
- Fire Fighting Services.
- On line boosting / Oil / Petroleum Handling Services.

OPERATING RANGE

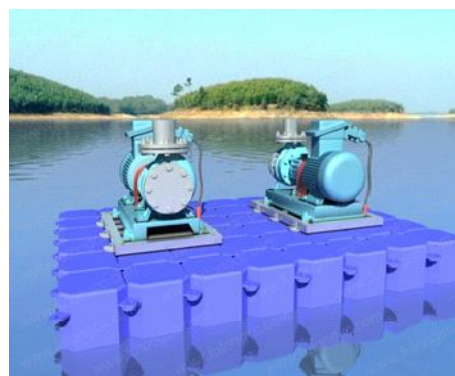
- Capacities : up to 20000M³/hr
- Head : up to 300 mtrs.
- Bowl sizes : from 100mm to 1600mm
- Moc : CI/SS/ALLOY 20 ETC



FLOATING PUMP

These special type of pumps have been designed to float in rivers, lakes and sump where level of liquid is changing constantly and sometimes liquid requires positive or low suction. Following are the special features of the pumps.

- Can Take both axial and radial loads, specially designed to take thrust loads due to high currents in rivers.
- The center of gravity is maintained in such a way that the pump will always be in position and even if some heavy logs/animals / external forces in the river try to change its position the pump tends to come to its original floating position when the external lateral force is removed.
- Very easy to maintain: High power/energy savings as compared to high suction pumps.
- Pump and floating platform can be made from MS, PP or SS as per requirement.
- As floating pump can run in the water, such pumps are useful for simplifying the earth work and engineering construction of pumping station, thus reducing installation area and saving 30~40% of the total project cost.
- Can solve the flood resistance problem of those rivers and lakes which have large fluctuation of water levels.
- Can be supplied up to 200 meter head and 1000 M³/hr
- Floating pumps removes the need for any civil construction on the river banks.
- Floating pumps are not affected by the fluctuations of the water (tide) levels. Since the pump is always floating, it ensures that the impeller remains submerged. Pump is under water or has very low suction head due to floating platform in surface pump.
- Since these pumps are floating, the issue of depth of suction is ruled out.
- Very useful when suction lift is very high.
- Very useful for slurry, hot water and for mining application.
- Always made as per customer's requirement and we use different type of pump and platform as per characteristics of liquid.



"SPCF" SERIES SELF PRIMING CENTRIFUGAL PUMP

APPLICATION

- KEN engineers now introduces self priming cum centrifugal pump with closed and semi open impeller .
- We have made SS-304 or SS-316 chamber in round shape or in square shape .
- These chambers are interconnected with casings , casings have flap type or disc type non return valve (NRV) depend upon application . We use flap type NRV when liquid is dirty or containing some solid particles . We use disc type check valve when liquid is crystal clear.
- These NRVs hold liquid in the chamber and centrifugal pump works as self priming pump.
- All wet parts are made from SS-304 or SS-316 sheet only and chambers are tested with hydraulic test up to 10 bar . If more pressure is needed, than we test at 1.5 times the shutoff pressure. Thickness of sheet depends upon size and pressure of the system .
- These pumps are ideal for all applications where people do not want to use foot valve or have suction problem .
- Size of self priming chamber depend upon capacity and suction length .
- We also offer openable chamber so one can clean it very easily.
- This is required in sanitary application and in some sticky material application.
- All our CF series pumps are now available with such chamber in monoblock or bare version.
- All our mud pumps which is comparatively costly in SS castings are now offered in our new
- SPCF version with open or semi open impellers .



OPERATING RANGE

- Size : 12 MM TO 100MM
- Head : 03 METERS TO 76 METERS
- Capacity : UP TO 500 M³/HR



"MSP" SERIES SELF PRIMING CUM CENTRIFUGAL TYPE MUD PUMPS

APPLICATIONS

- Sewage and Effluent treatment plants.
- Low NPSH process circulation duty.
- Aboard ships as bilge, deck wash pump & engine cooling pump.
- Loading , Unloading and transfer of tricky liquids viz. oils , solvents , gas oils , minerals , oils , grease, petrol, seawater etc.

OPERATING RANGE

- Capacity : up to 350 M³/hr,
- Head : Up to 60m
- Suction Head: Up to 8 meters.
- Material : Cast Iron & Bronze,
- Solids : Up to 41 mm dia.
- Viscosity : Up to 100mm²/sec.



SS/PP/ALU/ VERTICAL CENTRIFUGAL MOTORISED BARREL PUMP

MODEL MBSS-1

- Outer Pipe Dia meter : Ø40 mm
- Outlet Size : 20 mm (3/4")
- Power : 0.88 kw
- Speed : 10000 RPM,
- Voltage : 220v , 50 Hz
- MOC : Aluminium / PP / SS-316 / PTFE
- Shaft : MS / Alloy-20 / SS

HEAD IN MTRS	0	5	10	15	20	23
CAPACITY IN LPM	43	31	26	16	3	SHUT OFF
AMPERE	2.8	2.8	2.5	2.5	2.2	2.0

Flame proof version Available on request.



GEAR/SCREW TYPE BARREL PUMP

APPLICATIONS

To Transfer Highly Viscous Materials such as Petroleum Jelly, Adhesives, Creams, Pastes from Barrels & Liquid Glucose.

MOC	SS
MAX FLOW	UP TO 100 LTR/MIN
HEAD - M	60
LENGTH/DIA-MM	1000/42-52
ROTOR	SS
STATOR	VITON/HIGH NITRILE/EPDM/NEOPRENE
POWER	440V, 1/1.5/3HP (1 PH ON REQUEST)
DUTY CYCLE	CONTINUOUS



CI/SS DIAPHRAGM TYPE BARREL PUMP

- Made from Cast Iron / ss as per customer's requirement.
- Work in any position Vertical / Horizontal Upside down
- Very Easy Installation
- Made from 4 parts only
- Liquid of any viscosity can be used
- Diaphragm is of PTFE Material
- Capacity : Per Rotation 150 ml



PUMP MODEL	HDB CI-1	HDB SS-1
CAPACITY	16 LPM	16 LPM
INLET X OUTLET SIZES	1" X 1"	1" X 1"
MATERIAL OF CONSTRUCTION	CAST IRON CONSTRUCTION	SS CONSTRUCTION



STAINLESS-STEEL PNEUMATIC OPERATED FORCE TYPE BARREL PUMP

- Stainless Steel Pneumatic Transfer Pump for Food syrups, Ketchup, Flammable Media,
- Chemicals, Paint, Liquid Media with Fillers, Fuel
- Flow rate - 70 liter per minute
- MOC - SS 316
- Inlet diameter - 40
- Outlet diameter - 25 mm
- Air Hose diameter - 8 mm
- Safety Valve Pressure - 0.03 Mpa
- Air Pressure - 0.1 Mpa
- Length of the Pump - 1.12 meter
- Length of the tube - 1 meter
- Head - 15 meter
- Weight - 6 kg
- Filter Gauge supplied as free accessories

Capable of pumping and discharging water, oil and bottom sludge.
And also any explosive material can be sucked when the pump is properly grounded.



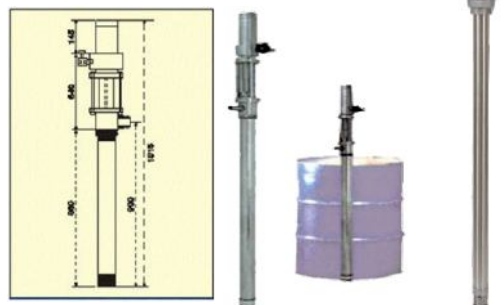
Air Pressure (Kg/cm ²)	2.9	2.1	2.5
Head in Meter	0	10	15
Flow (LPM)	153	64	34

PNEUMATIC OPERATED BARREL PUMP (DRUM PUMP) (RECIPROCATING)

"KEN" Barrel pumps works in reciprocating action. Barrel pump is useful for safe and efficient handling of highly corrosive chemicals, solvents, acids, petroleum products diesel oil, and fuel oils, plating solution, toxic chemicals etc. It eliminates danger of spillage explosion hazards. Construction of KEN Pump is such that operating compressed air never gets in contact with pumped liquid. The pump can be directly inserted in to the barrel threading provide on the pump adapter. It sucks the liquid from the bottom and hence less chances of leftover material. It does not have any type of motor and hence virtually zero maintenance.

APPLICATIONS

- KEN pump operates on compressed air of 4 to 6 kg/ cm²
- Adjustable flow rate.
- Self-priming
- Easy to lubricate.
- Easy to maintain
- Light weight.



TECHNICAL DATA	
CAPACITY	40 LPM
HEAD	15 MTRS
OPERATING PRESSURE	3 to 6 Kg/Cm ²
MATERIAL OF CONSTRUCTION	S.S.304/316
DISCHARGE	1 INCH
TEMPERATURE	120°C

DIAPHRAGM HAND PUMP

One of the most popular applications of diaphragm hand pump is as barrel pump, for emptying drums, barrels and carboys. It can handle all types of liquids, such as clear liquids, liquids containing solids, latexes (shear sensitive liquids/ thyratrophic liquids), slurries, corrosive liquids. It is ideal for handling of inflammable liquids, such as solvents, as its operation is without friction, and hence is suitable for flame-proof plant conditions. It is self-priming and requires no special mounting. Just dip suction tube in the barrel and apply handle. It can suck out the last drops of liquid from drum. 1" or 1.5" pump is recommended for this duty. It is a low cost substitute for motorized barrel pumps such as Lutz, Graco, etc. It can empty a 55 gallon (200 ltr) drum in 8 minutes (1" pump) or 4 minutes (1.5" pump). Depending on the application, these pumps are available in different materials of construction (MOC).



Typical Applications of Different Size :

1"	Drum unloading, High head transfer, Re-packing, small capacity applications, diesel & petroleum product handling. For Diesel, oils, LDO, Fo, Kerosene our model in size 1" in cast iron with Nitrile Rubber parts is suitable. For Solvents our model in size 1" in CI/SS with EPDM/VITON Rubber parts is suitable. For Acid & Alkalis our model in size 1" PP with Neoprene Rubber parts is suitable
1.5"	Tanker unloading, Low Head transfer, High Capacity Transfer
2"	Very High capacity transfer at free discharge (no head), Effluent handling, Mud water, Construction sites, Manhole cleaning, Agriculture etc.

INDIA MARK II HAND PUMP & OTHERS

India Mark II Hand pump is the largest selling hand pump in the world and is used in many countries of the world as the backbone of their community water supply. It is suitable for a depth of up to 50 Meters.

The following components are available:

1. Connecting Rods
2. Riser Pipes
3. Cylinder Assembly with all components

The Entire above ground components are strong and sturdy. India Mark II Pump works on the positive displacement

principle, hence the discharge remains constant irrespective of the depth of bore. India Mark II Hand pumps are available in different weight variants. It is available with either color or zinc coating.

other type of Hand pump available



TYPE HAND OPERATED BARREL PUMP



Cast Iron
Hand operated
Barrel pump



PP (Plastic) Hand
Operated Barrel
Pump



SS-316/SS-304
Hand Operated
Barrel pump



Aluminium
Hand Operated
Barrel pump



PTFE Hand
Operated Barrel
Pump



Piston type
PP Barrel pump



Piston type
SS Barrel pump



Siphon type hand
Operated pump



Lever Action
PP barrel pump



Lever Action
Aluminium & Plastic
Hand Operated pump



Motorised Barrel
Pump Ac/dc Plastic
For Fuel Only



Diaphragm type
Hand operated Barrel pump
in CI/SS (100 % free



Diaphragm type
Hand operated pump in
PP material



Piston type mini pump

DC PUMP / SOLAR PUMP

- These pumps are dc pumps and special made where AC power is not available.
- One can run these pumps on car/truck battery or even on solar power.
- DC motors are of 3000/1450 RPM and are of PMDC or BLDC type so efficiency is high and maintenance is very less.
- All pumps are fitted with mechanical seal and we offer pumps with various material of construction.
- Bigger pumps can be made as per customer's requirements.
- Pumps will be of self priming, centrifugal and gear type, piston type etc and can be used for any type of liquids like diesel, petrol, oil, water, salt water, hot water etc.



TECHNOLOGY

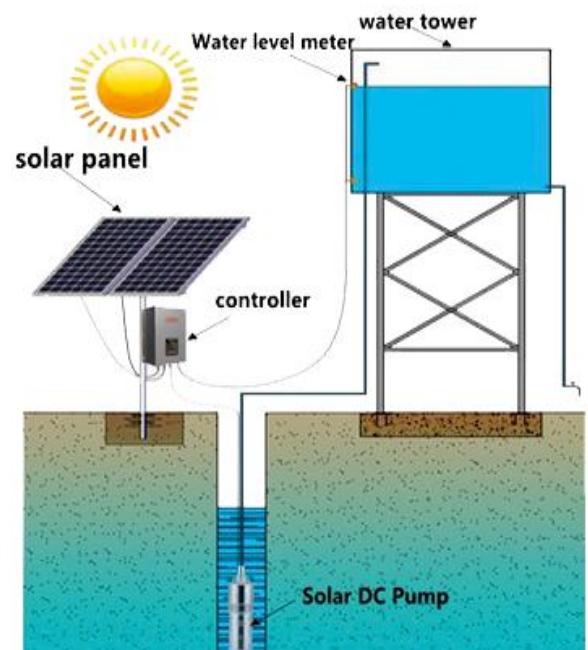
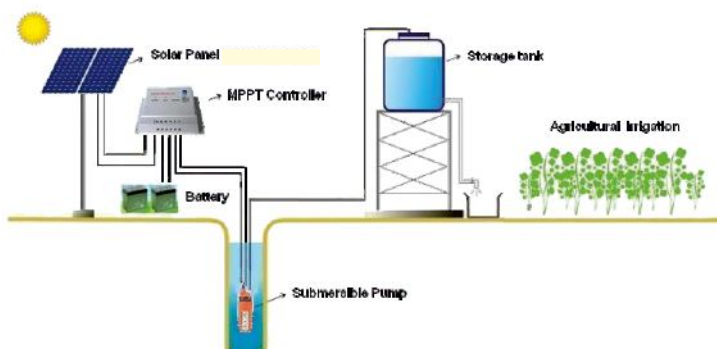
- The sun rays on solar panel generate DC power, same power can be used by two way
 - 1) we can use DC pumps and connect it directly OR
 - 2) we use solar controller which will convert
- DC power in to AC power and run AC pump
- An array of solar panels connected in series and parallel configuration generates the power and voltage required for the VFD (Variable Frequency Drive) Controller to drive the motor.
- The DC to AC frequency converter in the solar drive converts the DC voltage input to the drive to variable 3-phase AC voltage and frequency.

SALIENT FEATURES

- Can be used for any kind of Motor or pump loads ranging from 1 HP to 100 HP.
- Uses MPPT (Maximum Power Point Tracking) to deliver energy at various solar energy levels.
- System can be used for existing pumps and motors and hence no replacement of new loads.
- Water pumped even in morning, evening and in cloudy weather at low speed flow for over 12 hours per day when we connect it with battery.
- Long term, environment friendly, economic solution with proven technology.

FOLLOWING PROTECTION ARE INBULT IN THE VFD CONTROLLER

- Panel Reverse Polarity, Short Circuit
- Over Load
- Over Voltage
- Multiple pumps can be connected to single controller
- DC Power meter included



DC PUMP / SOLAR PUMP

We are making DC pumps for various application as per customer's requirement

- Motor type : PMDC / BLDC as per customer
- Voltage Range : 12 volt to 380 volts DC
- Pump type : Centrifugal, Self priming
- HP : up to 20 HP



BLDC pump for milk Application



Monoblock & coupled are available



BLDC Centrifugal pump



for 50 watts to 300 watts DC diaphragm pumps for solar and other application



DC Bidge Pump

MINI SOLAR SUBMERSIBLE PUMP

APPLICATION

- Drinking water project
- Replacement of hand pump
- Domestic



SDCS-50

100 % MADE IN INDIA

- Drinking water project
- Real DC powered solar submersible pump
- Max OD : 92 mm
- Out let size : 10 mm
- Operated 12 volt DC
- Directly on solar panel or even on small battery

DC 12 V SUBMERSIBLE PUMP

HEAD IN (METERS)	0	5	10	15	20	25	30	35	40	45	50	55	58
AMPERE	2	2	3	3	3	3	3	3	3	3	3	3	0
FLOW IN (LPM)	3.15	2.62	2.33	2	1.87	1.75	1.6	1.44	1.33	1.27	1.18	1.07	0

"KSCF" SERIES STAINLESS STEEL CENTRIFUGAL PUMP (CASTING)

APPLICATION

- High Efficiency and High Discharge rate at less power Consumption.
- Casing and Impeller are made of SS 316
- Anticorrosive stainless steel shaft.
- Impeller is dynamically balanced for low noise and longer bearing life.
- Long life due to replaceable wearing parts.
- Easy spares availability
- Suction lift up to 8 meters.
- Extremely simple in construction , Easy Maintenance and Easy gland packing replacement.
- Available in various pipe sizes.
- Sealing arrangement with mechanical seal is standard supply,
gland packing arrangement available on request.
- Mechanical seal with Carbon – Ceramic with S.S. Spring.
- Gland Packing (if fitted with) PTFE.
- SCFZ Series suitable for B5 TYPE IEC Motors.
- All models are available in 60 Hz on request.



RANGE

- Pressure : Up to 2.5 Kg/Cm²,
- Discharge : 100 lpm to 600 lpm,
- Pipe Size : 25 x 25 mm to 50 x 50 mm,
- Power Rating : 0.5 hp to 3 hp

PUMP PERFORMANCE TABLE

MODEL	PIPE SIZE	SPEED (rpm)	MOTOR RATING		DUTY POINT HEAD (M)	TOTAL HEAD IN METERS				
			KW	HP		5	10	15	20	25
KSCF-51	25 X 25	2800	0.75	1.5	22	160	140	135	125	90
KSCF-61	40 X 25	2800	1.10	1.5	18	300	250	160	80	-
KSCF-71	40 X 40	2800	1.5	2	18	240	200	180	130	-
KSCF-72	50 X 50	2800	1.5	2	15	300	260	220	-	-
KSCF-81	40 X 40	2800	2.20	3	25	340	280	250	240	210
KSCF-82	50 X 50	2800	2.20	3	20	520	490	410	330	-

ELECTROMAGNETIC FLOW METER MAGFLOW 6410 & 6420 (FULL BORE TYPE)

"TORQUE" make series 6400 (Full Bore Type) are new range of Bipolar Pulsed DC Full Bore type Electromagnetic flow meters. It is suitable for pipes with nominal diameters of DN 10 to DN 600. They are based on Faraday's law of Electromagnetic Induction. The series 6400 meters feature flanged construction and is available with choice of liner and electrode materials. Series 6400 has excellent accuracy and flow range ability. The meter is suitable for use on wide range of corrosive and aggressive range of conductive liquids.

Available for pipe sizes Range : DN 10 to 3000

APPLICATION

- Water Supply Networks, Chemical, Petrochemical and Process Industries (Only Conductive Liquids)
- Pharmaceutical Industries / Paper and pulp Industries / Fertilizer Industries / Beverage Industries
- Waste - Water management , Sugar, Food, Drug and Beverages Industries
- Effluent Treatment Plants, Aluminum, Steel, Mining and Dredging Industries

SPECIFICATION

- | | |
|---------------------------------|--|
| • Suitable for pipe sizes | : DN 10 to DN 2000 |
| • Media Conductivity (Min) | : 10 μ S / cm (Consult factory for 5 μ S/cm) |
| • Media Pressure | : PN 40 up to DN 80, PN 16 upto DN 200 & PN 10 up to DN 600 |
| • Media Temperature (PTFE) | : 0"-180c with remote transmitter
0"-120c with integral transmitter
0"-90c max for other Liners |
| • Material | : SS 316 (Non - Magnetic) |
| • Liner | : PTFE / Neoprene / Polyurethane |
| • Electrode | : SS / Hastelloy C / Ta / Ti / PL |
| • End Connection / Flanges | : Carbon steel / SS 304 / SS 316 / SS 316L |
| • Coil Housing | : Carbon steel / SS, Epoxy painted |
| • Transmitter | : Cast aluminum (Lm6), Epoxy painted |
| • Power supply | : 110 / 240 V AC + 15 % 50 Hz |
| • Power consumption | : 20 VA |
| • Analog Output | : 4-20 mA / DC / 0-20 mA DC |
| • Communication port (Optional) | : RS -23 / RS - 485 MODBUS RTU protocol |
| • Response time | : 5 second |
| • Flow velocity Range | : 0.3 to 10 m/s |
| • Ingress Protection | : IP - 65 (IP 68 on request) |
| • LED Display | : 4 Digit Indication for flow rate and 8 digit indication for Totaliser programming from keyboard for engineering unit |
| Accuracy | : 0.5 % of measured value (calibrated) at reference conditions |

- | | |
|---------------------------------|--------------------------|
| • Accuracy | : 2 % of span |
| • For flow Between 0 to 100 % | : Refer Error Diagram |
| • Reference Conditions | |
| • Power Supply | : Nominal |
| • Ambient Temperature | : 25 + 2c |
| • Load Resistance | : 500 |
| • Repeatability | : + 0.2% of span |
| • Effect of Ambient Temperature | : Less then 0.2% per 10c |
| • Effect of power supply | : Less then 0.1% per |
| • 10% Voltage Variation | |
| • Effect of Load Resistance | : Less than 0.1% of span |



GAS TURBINE FLOW METER

"TORQUE" Make Gas turbine flow meter (flow transducer) is a high accuracy flow sensor. It can be widely used in the fields of air, natural gas and other gas to be measured. Several output and display methods can be selected. Available for pipe sizes Range : DN 15-DN 1000 MM

APPLICATION

The standard turbine meter is suitable for custody transfer gas measurement of all non-corrosive gases such as natural gas, propane, butane, air, nitrogen, hydrogen, etc. for low and high operating pressures. Special constructions can be supplied for use under extreme condition like high temperatures or corrosive gases. We can modify to perform as a master meter or transfer master meter.



MASS FLOW METER

A mass flow meter, also known as an inertial flow meter is a device that measures mass flow rate of a fluid travelling through a tube. The mass flow rate is the mass of the fluid traveling past a fixed point per unit time. The mass flow meter does not measure the volume per unit time (e.g., cubic meters per second) passing through the device; it measures the mass per unit time (e.g., kilograms per second) flowing through the device. Volumetric flow rate is the mass flow rate divided by the fluid density. If the density is constant, then the relationship is simple. If the fluid has varying density, then the relationship is not simple. The density of the fluid may change with temperature, pressure, or composition, for example. The fluid may also be a combination of phases such as a fluid with entrained bubbles. Actual density can be determined due to dependency of sound velocity on the controlled liquid concentration.

Measuring Range : 0-150 T/H , Accuracy : +0.20 %

APPLICATION

Oil / Petrol / Diesel & All Liquids Where High Accuracy is required



VERTICAL BOREWELL SUBMERSIBLE PUMP

KEN engineers has been manufacturing & marketing "KEN" brand of vertical borewell submersible pumps suitable for bore size of 3", 4", 6", 8", 10", 12" and 14"

FEATURES

- KEN submersible pumps are vertical, multi stage, centrifugal pumps with motor at the bottom & pump at the top.
- The water enters at the bottom of the pump and flows upwards through many stages.
- The stainless steel bronze impellers rotate inside the diffusers with inherent guide vanes. The diffusers direct water leaving each impeller towards suction opening of the next impeller, such a flow through each stage of impeller and diffuser combination adds pressure at each stage and finally water under high pressure is discharged through outlet at the top.

APPLICATION

Agricultural, Industries, High rise Buildings, Fire Fighting, Sea water application. etc..



AGRICULTURE CENTRIFUGAL PUMP

FEATURES

- Agriculture.
- Building services.
- Aqua culture.
- Salt water Lake.
- water transportation.

OPERATING RANGE

Centrifugal pumps in coupled version widely used in agricultural and industrial applications where head is low and discharge is high.

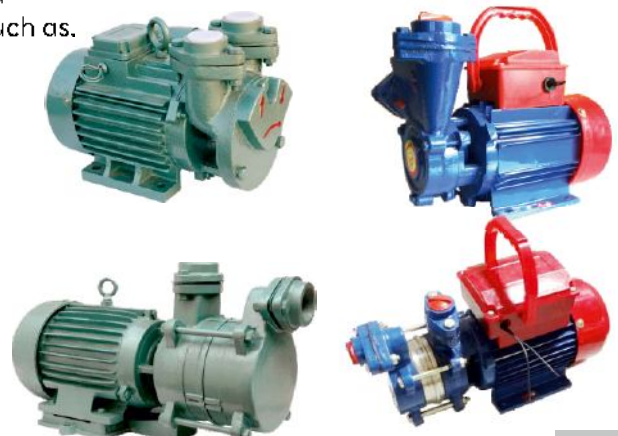
- Size : Up to 8"
- Flow : Up to 540
- Head : Up to 25 meters



DOMESTIC SELF PRIMING PUMP

Domestic Monoblock Pumps are replacing centrifugal pumps at a number of places because of some of the inherent advantages, such as.

- Uni-casing, so no air lock problem.
- Balanced and rigged construction.
- No centrifugal switch.
- Less operational and maintenance cost.
- Self priming no need of foot valve
- Up to 2 hp
- Max head-10 Bar, Max flow 100 Lpm



SPECIAL CUSTOM-BUILT / IMPORTED PUMPS



Hydraulic/Pneumatic
Operated submersible pump



Lined pump/Ni-Hard
Pump for Abrasive slurry



Twin Screw pump for
Viscous material in food industries



Sine pump
For food Industry



Coal-tar / molasses
transfer pump



SS magnetic Driven pump



Vibration submersible pump



Dosing pump



Mini Dosing pump



Pneumatic operated mud pump



Spares for pumps



Flame proof and
Special Features motors



Grouting pump



Peristaltic pump



Tube pump



Rotary vane pump



Root blower



Molten Metal and
Sulphur (High temp. Liquid)



Pump with self priming
Chamber

ACCESSORIES AVAILABLE WITH PUMP



Temp/Pressure/Transmitter
level



Temp/Pressure/Transmitter
level



Level switch



Radar Level Transmitter



Special Sound Proof Canopy



Starter & Control Panels



ELP Starters and
Control Panels



Different type of valves



SS Flexible Pipes and Hoses

TECHNICAL INFORMATION

SR.NO.	LIQUID NAME	ABSOLUTE VISCOSITY IN CP
1.	Butter	45
2.	Condensed milk	40-80
3.	Cream	55
4.	Milk	2
5.	Cheese	6500
6.	Yoghurt	152
7.	Chocolate syrup	10000-25000
8.	Corn syrup	12000
9.	Castor oil	580
10.	Coconut oil	55
11.	Detergents	1470
12.	Toothpaste	100000-700000
13.	Molasses	1400-13000
14.	Juice concentrate	630
15.	Tomato ketchup	50000-100000
16.	Auto lube oil SAE 90	320
17.	Auto lube oil SAE 40	200
18.	Glycerin 100%	648
19.	Kerosene	3
20.	Metallic auto paint	200
21.	Ethylene glycol	18
22.	Clarified sewage sludge	2000
23.	Printer ink	550-2200
24.	Varnish	140
25.	Fruit juice	55-75
26.	Honey	2000-10000
27.	Water	0.89
28.	Shampoo	3000
29.	Liquid glucose	4300-8600
30.	Sugar syrup	Up to 400

Dynamic Viscosity Units

Centipoise	Poise	Pound/foot-second
cp	poise	lb(ft-s)
1	0.01	0.000672
100	1	0.067197
1488.16	14.8816	1

Kinematic Viscosity Units

Centistoke*	Stoke	Foot square/second	Meter square/second
CS	ST	FT ² /S	m ² /S
1	0.01	0.000011	0.000001
100	1	0.001076	0.0001
92903	929.03	1	0.092903
1000000	10000	10.76392	1

Head Conversion Chart

	Meters	Feet	Kg/cm ²	PSI
Meters	1	3.28	0.1	0.007
Feet	0.30487	1	0.0304	2.128
Kg/cm ²	10	32.8	1	14.28
PSI	0.7	2.296	0.07	1

- **WHAT IS NPSH-NET POSITIVE SUCTION HEAD ?**
Net Positive Suction Head or NPSH for pumps can be defined as the difference between liquid pressure at pump suction and liquid vapour pressure, expressed in terms of height of liquid column. Suction head is the term used to describe liquid pressure at pump suction in terms of height of liquid column.

- **NPSHA = NPSH Available (NPSHA)** : The absolute pressure at the suction port of the pump
- **NPSHR = NPSH Required (NPSHR)** : The minimum pressure required at the suction port of the pump to keep system from cavitation.

- **NPSHA should always be greater than NPSHR**

- **1 bbl/d = 0.0828 LPM**

CAPACITY CONVERSION			MULTIPLY BY			
Convert from	Convert to					
	m³/S	m³/min	m³/h	liter/sec	liter/min	liter/h
m³/s	1	60	3600	1000	60000	3600000
m³/min	0.0167	1	60	16.67	1000	60000
m³/h	0.000278	0.0167	1	0.278	16.87	1000
liter/sec	0.001	0.06	3.6	1	60	3600
liter/min	0.000167	0.001	0.06	0.0167	1	60
liter/h	2.7 10 ⁻⁴	0.0000017	0.001	0.00028	0.0167	1
US gpd	4.39 10 ⁻⁴	0.0000026	0.000158	0.000044	0.0026	0.158
US gpm	0.000063	0.00379	0.227	0.0630	3.785	227.1
cfm	0.00047	0.028	1.699	0.472	28.32	1698.99
Imp gpd	5.26 10 ⁻⁴	0.0000032	0.000189	0.0000526	0.00316	0.1895
Imp gpm	0.000076	0.0046	0.272	0.076	4.55	272.7

$$\frac{N_1}{N_2} = \frac{Q_1}{Q_2} \quad \text{BKW} = \frac{\text{m}^3/\text{hr} \times \text{Mtrs} \times \text{s.g}}{367.2 \times \text{pump eff}}$$

(Min power required at motor shaft)

$$\left(\frac{N_1}{N_2}\right)^2 = \frac{H_1}{H_2}$$

$$\left(\frac{N_1}{N_2}\right)^3 = \frac{P_1}{P_2}$$

N = RPM

Q = FLOW

H = HEAD

P = POWER

$$\text{Pump output} = \frac{\text{LPM} \times \text{Mtrs}}{6120}$$

(In kw)

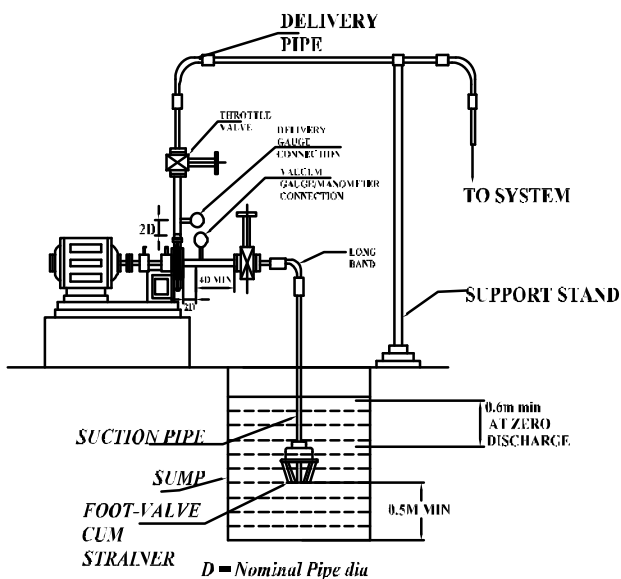
$$\text{Pump input} = \frac{\text{Electric meter reading}}{(\text{In kw})}$$

$$\text{Pump eff} = \frac{\text{Pump input}}{\text{Pump output}}$$

TROUBLE SHOOTING CHART

TROUBLE	CAUSE	REMEDY	TROUBLE	CAUSE	REMEDY
1. Motor dose not start.	<ul style="list-style-type: none"> No power supply. Motor protector is open due to Overheating. Capacitor Failure. Impeller struck. 	<ul style="list-style-type: none"> Check power supply. Remove fan cover and check rotation of fan along with shaft. Allow the motor to cool and switch it on. Replace capacitor. Remove fan cover and 	1. Quantity of water decreases even when pump is running satisfactorily.	<ul style="list-style-type: none"> Foot valve not functioning / strainer clogged. Suction lift is too high. Suction or delivery pipe blocked. Total head higher than the specified head. Check rpm of pump & motor 	<ul style="list-style-type: none"> Clean or change the foot valve / strainer. Suction head should be at proper height. Clean the pipe. Reduce the total head.
2. Water dose not remain in suction pipe.	<ul style="list-style-type: none"> Non return valve not in position. Holes present in the suction pipe. 	<ul style="list-style-type: none"> Keep the non return valve in position proper change suction flange in position. Change the suction pipe. 	2. Pump over loaded. (fuse goes off)	<ul style="list-style-type: none"> Total head higher then specified. Liquid too dense. Head is very lower then specified. 	<ul style="list-style-type: none"> Reduce the total head. Select suitable pump. Operate valve and maintain minimum head.
3. Pump doesn't deliver water.	<ul style="list-style-type: none"> Priming not sufficient. Air leak in suction pipe. Blocked suction pipe or choked foot valve. Too many bends in suction pipe. Leaking seal. Suction lift too high. Casing is tilted. Air lock side leaking. Pump running in opposite direction. 	<ul style="list-style-type: none"> Fill water till it flows continuously in air cock. Check pipe for leakages, use white lead or Teflon tape for joints. Clean pipe and foot valve. Lower the foot valve and pipe. Change or re-fit seal. Install pump within 8 meter from water level. Correct the casing so that the delivery out let is vertical. Tighten the air lock. if damaged replace it. Replace it. Change the electric connection. Check rotation of fan with arrow mark. 	3. Mechanical seal leak.	<ul style="list-style-type: none"> Running faces damaged. Dry run. 	<ul style="list-style-type: none"> Lap the running faces or change seal (Take the help of proper mechanic.)
			4. Pump gets jammed.	<ul style="list-style-type: none"> Kept idle for a long time. 	<ul style="list-style-type: none"> Remove fan cover and rotate the fan by hand Monoblock should be run for a few minutes at least once in two days.

STANDARD INSTALLATION OF CENTRIFUGAL PUMPS



IMPORTANT POINTS WHILE INSTALLATION OF PUMP

- 1) Make rigid foundation or use antivibration pad, provide support to hanging pipes.
- 2) Use footvalve cum strainers in suction line.
- 3) Use one size higher pipe diameter in suction pipe.
- 4) Ensure leak free joints in suction line.
- 5) Fill pump with water while starting pump & check it's smooth running.
- 6) Check direction of rotation of pump as per marking arrows.
- 7) Use valve and pressure guage on delivery side. (Helpful in maintaining head in system)
- 8) Do not run pump dry.
- 9) When not in use, fill pump with some liquid.
- 10) Always keep essential spares in stock like seal, shaft, impeller and gasket.
- 11) Pump should always be opened by skilled worker.
- 12) Check actual head of system and run pump at head specify as per name plate only.
- 13) Maintain minimum head and maintain amp mention on motor name plate.

INDUSTRIES & APPLICATIONS WE SERVED

- Agriculture
- Air conditioning
- Atomic energy
- Auto mobile plant
- Beverages manufactures
- Boiler manufactures
- Chemical process plants
- Machinery manufacturers and suppliers
- Chillers plant
- Color dyes and pigments / Paint industries
- Ceramic and Stone industries
- Construction
- Cooling plant and AC plant
- Dairy product / Dairy machinery
- DM water plant
- Effluent treatment plant & equipment
- Electroplating / finishing plants
- Fire fighting
- Food processing
- Foundry / Furnace
- Hydro test
- Sea water application & marine application
- Ice cream & Frozen desserts manufacturers
- Irrigation systems and equipment
- Molding machinery / plastic machinery
- Mining industries
- Oil and petrochemicals plants
- Paper and cement industries
- R.O. / D.M. Water plants
- Slurry / Sludge, Hydrocarbons etc
- Textiles machinery
- Textiles process house
- Tiles & Marble factories
- Water treatment plant & Waste water
- Washing & booster application

PRODUCTS WE SERVE

- Hand Pump
- Vertical Sump Pumps
- Chemical Pumps
- Sea Water Pump
- LPG Pump
- Solar Pump / DC Pump
- Pulsation Dampener
- Flame Proof Pumps
- Floating Pump / Platoon
- Diaphragm Pumps
- Sealless Pumps
- Barrel Pumps
- Fuel Transfer System
- Turbine Pumps
- Horizontal Centrifugal Pumps
- Sanitary Pumps
- Mud Pumps
- Polypropylene Pumps
- Back Pull Out Pumps
- Submersible Pumps
- Flame Proof Motors
- Custom Built Pumps
- Electromagnetic flow meters
- Ultrasonic Flow meters
- Vertical line shaft pump
- Hydro test pump
- Air driven pumps
- Hydraulic driven pumps
- Vane pumps
- FLP starters & panels
- Pump related instrumentations
- Root blowers



🏠 309, Nandanvan Complex, Opp.
R. T. O., Nr. Subhash Bridge Circle,
Ahmedabad - 380027

✉ ken.enggad1@gmail.com | pst@kenengineers.com

☎ +91 9824018490 | 079 27560514 | +91 8905806763



www.kenengineers.com

