



- Cement & Concrete Testing Equipments
- Soil & Sand Testing Equipments
- Asphalt & Aggregate Testing Equipments
- Surveying Equipments
- Pharmaceutical Lab Equipments
- Environmental Lab Equipments
- General Laboratory Equipments

Our Mission

To exceed our customers' expectations in quality, delivery and cost through continuous improvement and customer interaction.

CONCRETE TESTING EQUIPMENTS

C-tech instruments offer wide range of concrete testing instrument as per IS standard to perform various concrete tests. Concrete's versatility, durability, and economy have made it the world's most used construction material.

India uses about 180 million cubic meters (240 million cubic yards) of ready-mixed concrete each year. It is used in highways, streets, parking lots, parking garages, bridges, high-rise buildings, dams, homes, floors, sidewalks, driveways, and numerous other applications.



MORE CONCRETE TESTING EQUIPMENTS

- Digital Compression Testing Machine(50KN To 3000KN)
- Analogue Compression Testing Machine(50KN To 3000KN)
- Compaction Factor Apparatus • Concrete Consistometer • Concrete Penetrometer (Spring Type)
- Concrete Mixture (Drum Type) • Bulk Density Measurement • Buoyancy Balance • Vibrating Table
- Cube Moulds, Beam Moulds and Cylindrical Moulds (All Standard Sizes)
- Accelerated Digital Curing Tank • Longitudinal Compressometer and Lateral Extensometer
- Concrete Permeability • Length Comparator (Analogue and Digital)

CEMENT TESTING EQUIPMENTS

C-tech instruments offer wide range of cement testing instrument as per IS standard to perform various cement tests. Different types of hydraulic cement are manufactured to meet various normal physical and chemical requirements for purposes including low heat of hydration, high early strength, resistance to alkali-silica reactivity, and high sulfate resistance. There are many different properties and applications of cements for use in concrete including portland, blended, and hydraulic cements.

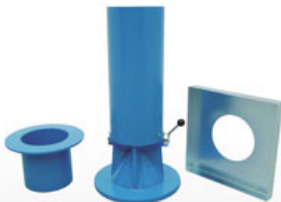
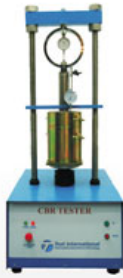


MORE CEMENT TESTING EQUIPMENTS

- Digital Compression Testing Machine(50KN To 1000KN)
- Analogue Compression Testing Machine(50KN To 1000KN) ° Le-Chatelier Mould and Flask
- Shrinkage Bar Mould ~ Le-Chatelier Water Bath ~ Mortar Cube Mould ° Flexural Prism Mould
- Jolting Apparatus ~ Cement Permeability ° Heat of Hydration ~ Digital Thermal Conductivity
- Cement Tensile Testing Machine ° Humidity Chamber ~ Digital Accelerated Curing Tank

SOIL & SAND TESTING EQUIPMENTS

C-tech instruments offer wide range of soil testing instrument as per IS standard to perform various soil tests. Soil is comprised of minerals, soil organic matter (SOM), water and air. The composition and proportion of these components greatly influence soil physical properties including texture, structure, and porosity, the fraction of pore space in a soil. In turn, these properties affect air and water movement in the soil, and thus the soil's ability to function. Many important soil processes take place in soil pores (the air or water-filled spaces between particles). Soil texture and structure influence porosity by determining the size, number and interconnection of pores. Coarse textured soils have many large (macro) pores because of the loose of larger particles with one another.



MORE SOIL & SAND TESTING EQUIPMENTS

• Plate Bearing Test Apparatus • Static Cone penetration Test Apparatus • Dynamic Cone Penetration Test Apparatus, • Sieves • Laboratory Permeability Apparatus • Compaction Test Apparatus • Unconfined Compression Tester • Liquid Limit Plastic Limit Test Apparatus • Sample Extractor • Speedy Moisture Meter • Infrared Moisture Meter • Soil Cone Penetrometer • Digital Sieves Shaker • Proving Ring • Standard Penetration Test • Load Truss • Cone Cutter • Constant Pressure System • Sand Pouring Cylinder Apparatus • Van Shear Test Apparatus

ASPHALT TESTING EQUIPMENTS

C-tech instruments offer wide range of Asphalt testing instrument as per IS standard to perform various Asphalt tests. Bitumen is a crucial component of asphalt - the most widely used material for constructing and maintaining roads in the world. Asphalt is typically a mixture of approximately 95% aggregate particles and sand, and 5% bitumen, which acts as the binder or glue. The viscous nature of the bitumen allows the asphalt to sustain significant flexibility, creating a very durable surface material.

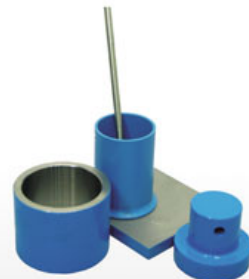


MORE SOIL & SAND TESTING EQUIPMENTS

Redwood Viscometer , Saybolt viscometer , How Cup , Ring and Ball Apparatus , Benkelman beam
• Pavement Dynamic Cone Penetrometer • Bump Integrator • Asphalt Mixer • Asphalt Density Meter
Hot Air oven • Hot mate

AGGREGATE TESTING EQUIPMENTS

C-tech instruments offer wide range of aggregate testing instrument as per IS standard to perform various aggregate tests. Aggregate in concrete is structural filler, but its role is more important than what that simple statement implies. Aggregate occupies most of the volume of the concrete. It is the stuff that the cement paste coats and binds together. The composition, shape, and size of the aggregate all have significant impact on the workability, durability, strength, weight, and shrinkage of the concrete. Aggregate can also influence the appearance of the cast surface, which is an especially important consideration in countertop mixes.



SURVEYING EQUIPMENTS



GENERAL LAB EQUIPMENTS



MORE LAB EQUIPMENTS:

Electronics Weighing Balance (All Standard Capacity) • PAN Weighing Balance • Spatula • Filter Paper (All Standard Size) • Digital Stop Watch • Scoop (All Standard Capacity) • Heat Resistance Gloves and Apron • Hammer (Plastic and Metal) • Measuring Tape (All Standard Size) • Metal and Nylon Brush • Hygrometer • Circular Plate • Sample Tray (Enamel Tray) • All Types of Glassware • Moisture Content • Glass Measuring Cylinder, Volumetric Flask, Burettes, Pipettes • Evaporating Dish • Dessicators • Vacuum Pump • Air Compressor • Digital pH Meter • Digital TDS Meter • Digital Turbidity Meter • First Aid Kit and Safety Kit • BOD Incubator • COD Incubator • Bottle Shaker • Drying Oven • Photo Stability Meter

SERVICE & SUPPORT

C-Tech instruments have been an established and popular company with an excellent track record for the best customer satisfaction. We have never compromised on the quality and the services provided to the customer. We believe in keeping the customers happy and providing them with products and service at a very competent price. We have an excellent staffs who will guide you with their best ideas by keeping in constant touch with your company and informing about the market trends.



C-Tech instruments offer below services and supports in Civil and Pharmaceutical field

- Calibration
- Validation
- Performance and Test Monitoring
- Annual Maintenance Contract
- Installation & Analysis
- Training & Seminar
- NABL Services

ADDRESS

C-TECH INSTRUMENTS

Registered Office Address:
28, Santoshinagar Part-2,
Near Ramrajya Nagar,
Amraiwadi,
Ahmedabad - 380026, Gujarat

Factory Address:
15, Pratham Estate,
Near Shakribaa Party Plot,
CTM Cross Road,
Ahmedabad - 380026, Gujarat

CONTACT US AT: +91-9998651020 | +91 -9067881460

EMAIL:

info@ctechinstruments.com
sales@ctechinstruments.com

service@ctechinstruments.com
instruments.ctech@gmail.com

WEBSITE: www.ctechinstruments.com