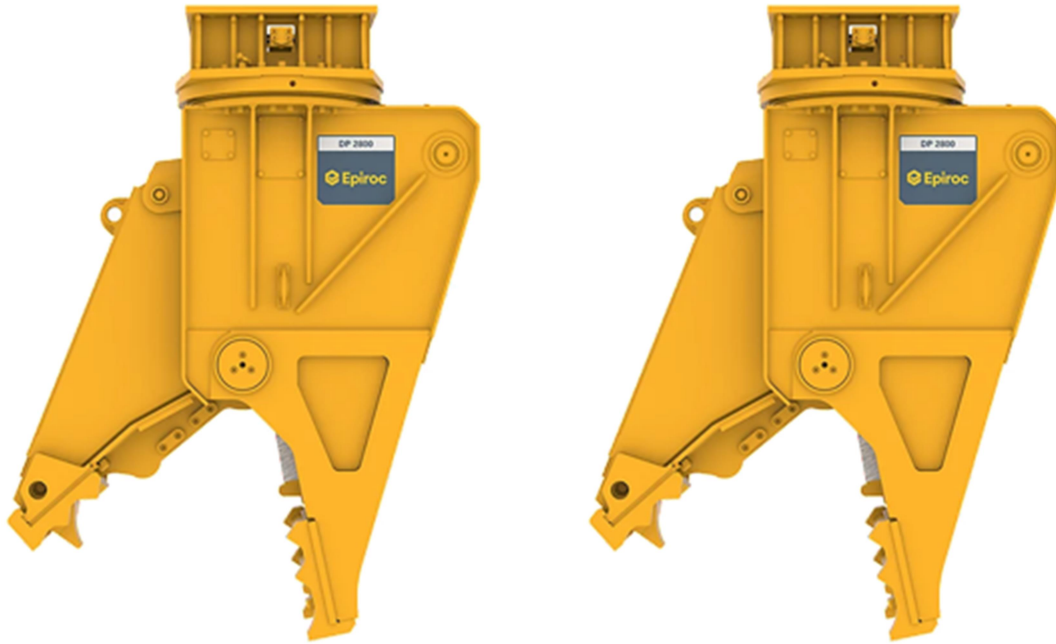


Pulverizers

The straight design of the Pulverizer makes it optimally suited for primary demolition and secondary reduction of non-reinforced and reinforced concrete structures. It ideally combines the characteristics of a demolition attachment with an excavator material Pulverizer.



Description

- DP range DP 2000 DP 2800
- Carrier weight class 18-27 t 25-35 t
- Service weight 2130 kg 2930 kg
- Product weight 1990 kg 2715 kg
- A 320 mm 2550 mm
- B 820 mm 1000 mm
- C 650 mm 750 mm
- D 190 mm 350 mm
- X 340 mm 340 mm
- Y 490 mm 500 mm
- F1 265 t 320 t
- F2 85 t 100 t
- Cycle time (opening & closing) 4.0/4.0 sec 4.0/4.0 sec
- Oil flow rate (opening & closing) 150—250 l/min 250—350 l/min
- Max. operating pressure (opening & closing) 350 bar 350 bar
- Oil flow rate (rotation) 35—50 l/min 35—50 l/min
- Max. operating pressure (rotation) 170 bar 170 bar

