



## *Precision Investment Casting*



- ▶ Engineering Components
- ▶ Automobile Components
- ▶ Pumps & Impellers Parts
- ▶ Stainless Steel Pipe Fittings
- ▶ Industrial Valves Bodies & Spares
- ▶ Ferrous & Non Ferrous Components

**SIR**  
THE KEY FACTOR

CATALOGUE



## Company Profile

---



Sondhi Industries (Regd.) is ISO 9001:2008 certified company. Our expertise is in precision investment casting components. We have highly qualified & well experienced personnel for the development of precise & accurate dies avoiding parting lines. Our engineer has over 24 years of experience in Investment casting. All the staff members are highly skilled and experienced.

We manufacture all types of ferrous and non ferrous investment casting. Some of the common grades are :

- ▶ Stainless steel – CF8 (304), CF3 (304L), CF8M(316),CF3M (316L), CA-15 410
- ▶ Carbon Steel – WCB
- ▶ Brass, bronze and Gun Metal

Further to above metals, all metals can be made as per the customer requirement. Chemical composition can be altered and controlled.

Our strength lies in continued growth through strong capital position, well defined success strategy and continuous hard work. We are very passionate in brand development and quality service. "Passion for us is the energy and hunger to work."

For keeping in pace with the globalization and changing market trends, we have turned ourself with the latest technologies & engaged ourself in the production of high quality products.

All the products offered by us are highly in demand in the market and are passed as per prescribed standards. Apart from this, our acute market knowledge and a team of dedicated professionals form the core strengths of the company. We stand on the pillars of integrity and professionalism, because of which we have garnered a huge clientele all across the world. Besides, our constant endeavour to improve the quality of the products as per the market trends and requirements has enabled us to outshine the competitors in this domain.



## Quality Policy

---



Maximise customer satisfaction in term of product quality as per their requirement. We focus our efforts on creating and maintaining a comprehensive and effective quality management system which greatly contribute to the objective of our organization.

All our products are tested and inspected on manufacturing and despatch. Each piece is fully inspected before dispatch.

We solely rely on :

- ▶ **Good Quality**
- ▶ **On time Delivery**
- ▶ **Low Cost**

The above mentioned things are not just said but our director makes sure they are implemented. We strive for continuous improvement in our systems.



**We guarantee low cost, High quality & upgraded technologies .....**

Our Quality and R&D department teams works with passion to maintain and continually improve the quality of products by continuing advances in valve design , material application engineering and production technology.

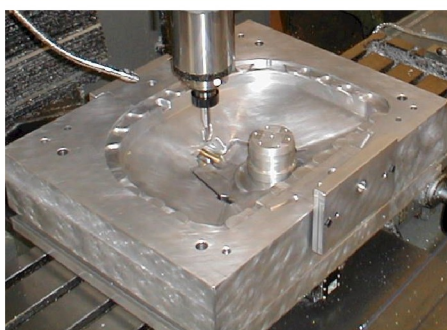
Replacement & Maintenance Costs. The high value, dependable performance, and low maintenance requirements of "SIR" brand products can help reduce overall operating costs and help cut downtime. A dedicated team of engineers work day and night to achieve excellence.

"We strike for excellence not success."

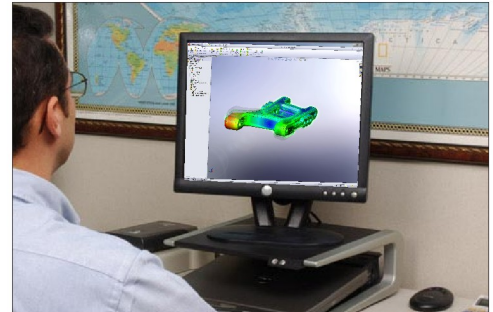
# Infrastructure

Our floor size for workshop is well over 90,000sq feet.  
Our Factory is fully equipped with coopla, 2 Induction Furnaces, VMC, CNC Turning centre, Machining lathes, Milling centres, Gang drills milling machines etc.  
Many of the machines are imported directly like :

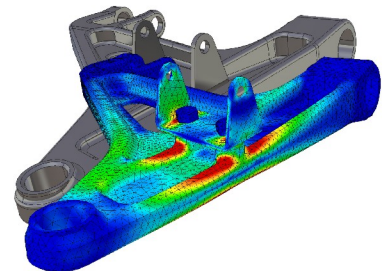
- ▶ NAKAMURA,
- ▶ LEADWELL,
- ▶ ROUCHARD,
- ▶ WMW etc.
- ▶ CHALLENGER
- ▶ BRIDGEFORD



All the Die for investment casting plant are made in- house, on VMC machines to reduce the cost.



Computer Added Designing



Preparation of 3D models



Wax Press Injection





Over 300 Kg. of single induction furnace with capacity of 3 tons/day.



All products supplied by us are precisely as per our clients requirement. We provide casted goods, semi finished as well as full finished products. Our Array of high high end machines help us achieve precision measurement. There is nothing we can not manufacture.

"If we can't, the no one can."

SPECTRA LAB for metal analysis



One of the CNC's bed is over 1 meter in length.